



Photography: Mark Crist

**PAYING CLOSE ATTENTION, people from around the area attended a VIP tour at the Northeast Research and Extension Center near Concord Monday night. During this stop, guests listened to John Witkowski about chemigating nematodes for corn rootworm larvae control.**

## Officials plan for the future VIP tour offers insight to station projects

By Mark Crist  
Managing Editor

CONCORD - Although the '90s have just begun, officials at the Northeast Research and Extension Center near here are examining "agriculture production in the '90s."

Through a myriad of techniques — studying everything from animal science to weeds and various plant and livestock operations — specialists discussed their projects during a VIP tour at the center Monday evening.

"Agriculture Production in the '90s" was the theme for the two-day event, which also featured specialized tours all-day Tuesday.

Reports were presented by 13 University of Nebraska extension center officials throughout the Monday tour.

TO START IT OFF, Charles Shapiro explained the purpose of

the center's sustainable agriculture exhibition.

He said the demonstration is funded by the Institute of Agriculture and Natural Resources. He said it will be conducted like mini-farms without the rigors of many test plots and it's hoped that local farmers and agribusiness people will participate in the project.

Although the program is in its first year, programs have been implemented with rotations on eight mini-fields. Two fields will be no-till corn or soybeans each year with the best management practices for these crops. The other six fields will have various rotations with the goal to minimize pesticide use but maintain productivity," Shapiro wrote in a report.

ON THE SAME PLOT of land, David Shelton, a biological systems engineer, discussed conservation tillage. He said in research conducted at the center, the findings

were a little disturbing.

"We found that the best soil erosion control was through sustainable agriculture" where residue cover is left on the soil, he said. "The 1985 Farm Bill specifies that 30 percent residue must be used in a cover plan and after harvest we found that soybeans left 80 percent cover and corn left 80 percent cover."

Shelton continued, however, noting that tillage operations with both the chisel or disk plows, resulted in too much erosion. He said only no-till lots left the percentage recommended by the government.

"This concerns me," he said.

A NEW PROGRAM just coming on line involves anhydrous ammonia application. According to Bill Kranz, who is overseeing the program, as high as 40 percent errors

See TOUR, page 12A

## Waste policy, public hearing top agenda

By Mark Crist  
Managing Editor

As a city ordinance, curb-side garbage pickup is a thing of the past as the Wayne City Council voted 7-0 to amend its previous provision with a new ordinance.

Apparently, whatever discussion was necessary occurred at a meeting Aug. 15 since no councilmembers voiced concerns over the change at Tuesday's meeting. Absent from the meeting was councilman Stanley Hansen.

The change means that haulers will again travel through alleys in parts of town which have them.

In another matter, the council will hold a public hearing Tuesday, Sept. 4 at 7:30 p.m. to review an application for the Wayne Revolving Loan Fund.

If the city council approves the application, it will be sent to the state for its approval.

The purpose of the revolving loan fund is to help businesses (new or existing) to relocate and add staff members under certain provisions. According to Joe Salitros, city administrator, an application has been received through Wayne Industries for Griess Rexall to relocate its business.

THE APPLICATION, however, drew an immediate response from councilwoman Carolyn Filter, who

said she would be unable to attend the public hearing due to a prior commitment. She said in lieu of attending, she will have questions drawn up and presented at the hearing.

"I have some definite concerns which I would not like to express at this time," she said.

According to Salitros, the application, received through Wayne

See AGENDA, page 12A

## Bid approval provides for new pump controls

WAYNE - During its meeting Tuesday, the Wayne City Council approved a bid of \$65,000 to place new sensors on the lift station drive pumps.

According to Cecil Coombs, of Howard R. Green Consulting Engineers, which reviewed the need to the drive pumps, the variable sensors will allow the pumps to run all the time.

Plans for the waste pumps were included in this year's fiscal budget, according to city administrator Joe Salitros.

IN THE PAST, variations in

See PUMP, page 12A

## Early figures out Census data shows overall drop in area's population

AREA - Preliminary figures released recently show a decrease in population for most of the area, according to U.S. census officials.

In Wayne County, population has decreased 5.1 percent since 1980. Figures show that the population in 1980 was 9,858 residents compared to 9,358 in 1990.

Population totals for Dixon County show a drop of 14.1 percent from 7,137 in 1980 to 6,128 in 1990. Cedar County also dropped from 11,375 in 1980 to 10,104 in 1990 for a drop of 11.2 percent.

According to Jerry Diechert of the center for public affairs research, the numbers are preliminary figures which represent partial population numbers. He said all figures are likely to increase.

In the area, the town of Dixon experienced the largest percentage drop of 31.5 percent. Dixon's population fell from 127 in 1980 to 87 in 1990.

The second largest percentage drop was credited to Allen with a fall of 20.5 percent. Allen popula-

See CENSUS, page 12A

## Closing arguments heard in Conway case

By Mark Crist  
Managing Editor

Although no decision has been announced by the Nebraska Supreme Court in State of Nebraska vs. Gerald Conway, closing arguments in the case were heard yesterday (Wednesday) morning.

According to supreme court procedures, each side was given 10 minutes to present arguments.

The case revolves around whether Conway, who serves as the District 17 state senator, can be employed as a teacher at Wayne State College while holding a public office.

ACCORDING TO COURT documents, the state of Nebraska, represented by the attorney general's office, argues that Conway's employment with Wayne State

breeches Article II, Section 1 of the Nebraska Constitution.

Although other articles of the Nebraska Constitution are mentioned, Article II, Section 1 describes the distribution of governmental powers to the executive, legislative and judicial branches.

The state argues that as a WSC employee Copway exercises executive duties as an assistant professor, and as a state senator he exercises legislative duties, therefore creating a conflict of interest.

The state is seeking to have Conway released as an associate professor at Wayne State College since he agreed to employment contracts in July 1989, following his win in the 1988 election.

AS A COUNTER-ARGUMENT, court documents from attorneys

representing Conway refer to Article IV, Section 1 of the constitution defining executive offices, quoting the passage "the executive officers of the state shall be the Governor, Lieutenant Governor, Secretary of State, Auditor of Public Accounts, Treasurer, Attorney General, and the heads of such other executive departments as set forth herein or as established by law."

The counter-argument continues by saying that "assistant professor" is not included in that section of the constitution.

In the counter-argument's conclusion, court documents said that Conway has no administrative duties at the college and has neither staff nor secretarial support and is therefore not in an executive position.

IN A SIMILAR CASE, *State of Nebraska vs. Marsh (1946)*, the court found that Rufus Howard, an employee of the state in an appointed position not named under Article IV, Section 1, could not run for the governor's seat because he held an "executive" office in a separate governmental branch but

the judge's ruling implied that if Howard held a lesser position, the result may have been different, court documents said.

In an Oregon case, the courts found that a state senator could not be employed by the state, which was referred to in court documents presented by the attorney general's office. The documents, however, noted a difference in Oregon's Constitutional wording.

A decision by the Nebraska Supreme Court is expected later this year or early in 1991 but no official date has been announced.

## CROP walk scheduled to be held on Sept. 30

WAYNE - "Put your feet where your heart is" is the theme for this year's CROP walk here on Sept. 30.

According to one of the CROP walk organizers, Nancy Heithold, this year's turnout is expected to exceed last year's record 170 walkers. She said anyone wishing to participate in the event can contact her at 375-3728.

In addition to walking, runners and bicycle enthusiasts are invited to participate.

According to Heithold, one of the good things about CROP is that 20 percent of all money raised is kept within the area. She said last year 15 percent of \$4,000, or \$600, remained within the area to help the needy and that helps sustain the program.

OF THE MONEY for local use, most of it is put into a food pantry.

She added that any interested civic groups are encouraged to participate in the event as a group, if they wish. She said arrangements can be made for those groups to walk as a group.

Heithold added that 80 percent of the money is given to Church World Service for overseas relief and development work.

The 10-kilometer walk will begin and end at the Wayne National Guard Armory. Registration the day of the event is set for 12:30 p.m. with walkers getting underway at 1 p.m.

THE ROUTE WILL include the new asphalt fitness trail near the college and no gravel roads will be used.

Water will be provided to participants but participants are asked to bring their own cup or glass. Rest rooms will be available in Rice Auditorium and Bressler Park.

For more information about the walk, CROP officials Heithold or Dr. Lyle Seymour can be contacted, or interested walkers may contact their CROP walk recruiter within their respective church. Sponsors may also contact any CROP walk official.

The trail course of the event will be advertised in The Wayne Herald in September.



Photography: Kevin Peterson

## Walking for women's athletics

AS AREA WOMEN TREKKED AROUND the Wayne State College track last Saturday, they raised a record \$10,000 for women's athletics at Wayne State. In addition to featuring several women from Wayne, the event saw celebrities like Cathy Egan of KTIV-TV Channel 4 in Sioux City; Miss Nebraska, Angi Humphrey and a host of Wayne State women athletes and former athletes. In all, 110 women participated in the annual event, according to Cyndi Wagner, director of annual giving at Wayne State.

## At a Glance

### No paper

WAYNE - Due to the Labor Day holiday Monday, Sept. 3, The Wayne Herald will not be publishing a paper in order for employees to observe the holiday.

### Siren tests

WAYNE - The monthly testing of the civil defense sirens will be Friday, Aug. 31 at 11:45 a.m., according to Wayne Police Chief Vern Fairchild.

Each siren will be tested in the silent mode, with the exception of the public address system, when an oral message will be given to test the effectiveness of the system.

Sirens are located at 3rd and Oak Drive, Greenwood Cemetery, 8th and Main Streets, 6th and Valley Drive and 14th and Providence Road.

### Telethon

AREA - The Wayne County Jaycees will be hosting the pledge center in Wayne for the 1990 Jerry Lewis Labor Day Telethon to benefit the muscular dystrophy association.

The 25th annual event will be broadcast by KCAU/KCAN, channel 9/8 at 8 p.m. Sunday, Sept. 2 to 6 p.m. Monday, Sept. 3.

The Wayne County Jaycees will be taking your pledges on Monday from 8 a.m. to 6 p.m. at 375-3860. The Jaycees will be hosting a "Fishbowl" for MDA in conjunction with the Labor Day Telethon Pledge Center. Anyone wishing to participate can pick up an official collection kit at 710 W. 3rd St.

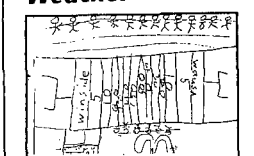
### Play auditions

WAYNE - Auditions for the Wayne Community play "Move Over Mrs. Markham" are scheduled for Sept. 4-5 at 7:30 p.m. at the Wayne Care Centre.

Ages 25-50 are encouraged to try out for the play, which will be directed by Gil Haase.

"Move over Mrs. Markham" by Ray Cooney and John Chapman will be presented in dinner theatre format at the Black Knight, Oct. 25-27 and Nov. 1-2.

### Weather



Gerrin Miller, 7  
Winside

Extended Weather Forecast: Friday through Sunday; hot and mainly dry; highs, upper-80s to mid-90s; lows, mid-60s to around 70.

## Schulz-Phillips vows exchanged in rites at Redeemer Lutheran Church



### Lutts celebrating 50th

**MR. AND MRS. HARVEY LUTT** of Wayne invite friends and relatives to help them celebrate their 50th wedding anniversary on Saturday, Sept. 8 during an open house reception from 2 to 4 p.m. at St. Paul's Lutheran Church, 421 Pearl St., in Wayne. Friends and relatives also are invited to the couple's home at 722 Sherman St. for a backyard supper starting at 6 p.m. Hosting the celebration are the couple's children, Gayle and Vern Dahlgren, Gene and Kate Lutt, Bob and Dianne Lutt, and Roger and Sandra Lutt. Also helping will be the couple's 11 grandchildren and six great grandchildren.

The marriage of Tammie Rose Schulz and Paul Phillips of Omaha was solemnized in 4:30 p.m. rites on Aug. 18 at Redeemer Lutheran Church in Wayne.

Officiating at the double ring service was the Rev. Franklin Rothfuss.

The bride is the daughter of Don and Sandra Schulz and the granddaughter of Mrs. Rose Schulz, all of Wayne. She graduated from Wayne-Carroll High School in 1977 and from Chadron State College in 1982. She is an office skills and technology instructor at Metro Community College in Omaha.

The bridegroom, son of Frank and Barbara Phillips of Ashland, Wisc., is a 1978 graduate of Ashland High School and a 1982 graduate of the University of Wisconsin at Eau Claire. He is the sales promotion manager for Pamida, Inc. in Omaha.

**KAREN** Mosier of Omaha and Denise Louthan of Douglas, Wyo. registered the 450 guests attending the couple's wedding.

Ushers were Rocci Schulz of Wayne, Terry Schulz of Columbus, Dustan McCright of Aurora, Colo., Mike Wieseler of Westminster, Colo., and Dr. Bob Skiles of Highland Park, Colo.

Decorations included two seven-branch candelabras adorned with purple and black bows with purple rose centers and string of black pearls, and six aisle hurricane candles decorated with purple and black bows.

The pews and outside church railing also were decorated with purple and black bows. All of the bows were made by the bride's mother.

THE congregation joined in singing the hymn, "Joyful, joyful We Adore Thee." The bride and her sister, Angie Schulz of Honolulu, Hawaii, sang "The Bridal Prayer."

Angie Schulz also sang "Day by Day" during the lighting of the unity candle. Organist was Mrs. Vera Hummel of Wayne.

Honor attendants were Angie Schulz and the bridegroom's brother, Steve Phillips of Milwaukee, Wisc.

Bridesmaids were Judy Honts of Omaha, Cheryl Geis of Phoenix, Ariz., Barrie Nelson of Longmont, Colo., Deena Phillips of Ashland, Wisc., sister of the bridegroom, Tracy Keating of Omaha, Julie

Overin of Denver, Colo., and Cheryl Christensen of Omaha.

Serving as groomsmen were Kurt Clabaugh of Spencer, Iowa, Scott Jacobson of Minneapolis, Minn., Mark Brandt of Columbus, Doug Harvey of Omaha, Tim Kolek of Mankato, Minn., Mitch Mosier of Omaha and Jason Schulz of Wayne, brother of the bride.

Flower girls were Amy Honts of Omaha and Kellie Granfield of Aurora, and ring bearer was Kiel Lawrence of Waverly.

Personal attendants for the couple were Jodie Granfield of Aurora and Joan Farrell of Elgin. Lighting candles were Sandy and Mike Sieler of Omaha.

THE BRIDE was given in marriage by her father and designed a white bridal satin gown fashioned with short satin caught up sleeves with purple bows at the shoulder and on the sleeves.

The waistline formed a V-shape as did the back of the gown. The bodice featured a lace overlay adorned with pearls and sequins. The pleated skirt was accented with ruffles, purple bows and lace edging.

She wore a lace-covered purple bow with a veil in her hair and her mother's pearl necklace.

The bride carried a cascade of purple and white silk roses, white stephanotis and lavender forget-me-nots with black pearls and lavender and white bridal streamers.

THE BRIDE'S attendants wore black and purple water taffeta dresses in tea length made by the bride's mother. The dresses were close fitting with V-shaped waistlines, princess sleeves and pleated skirts. Purple bows were attached at the shoulders and on the backs of the dresses.

Each carried a small hand bouquet of purple roses, black pearls and black star flowers with lavender ribbon.

The bridegroom and his attendants wore black tailcoats with purple bow ties and tapestry designed vests and cummerbunds.

Both mothers of the couple chose tea-length dresses. The bride's mother wore a deep purple dress which she designed, and the bridegroom's mother wore a light lavender dress.

A RECEPTION was held in the National Guard Armory with a buffet dinner prepared by each of the families and their friends.



Mr. and Mrs. Paul Phillips

Hosts were Vern and Dee Schulz of Wayne and Penny and Rick Unwiler of Lincoln. Providing music was Randy Jary of Wayne.

Pinning flowers were Kami DeCamp of Brady and Shelley Frevert of Wayne. Arranging gifts were Nannette Schulz of Wayne and Mary Jane Phillips of Milwaukee, Wisc.

Cutting and serving the cake were Marcia Adams of Iowa City, Iowa, Pat Gamble of Broken Bow and Mardell Mikkelsen of Wayne.

Pouring was Nancy Chapman of Blair and serving punch were Kim Brandt of Columbus, Doreen Lawrence of Waverly and Sherry Wieseler of Westminster, Colo.

Waitresses were Deb and Heather Marple of Broken Bow, Jill and LeeAnn Gamble of Kearney, Michele Adams of Coralville, Iowa,

Melanie Adams of Wichita, Kan., and Joni Paulsen of Riverdale.

Also waitressing were Laura and Leslie Keating of Wayne, Linda Horan of Omaha and Maggie Mahood of Lincoln.

Kitchen help included Darlene Frevert, Sharon Fler, Jennifer Phelps, Janet Heithold, Berlene Kinslow, Madelyn Heithold and Sandy Bartling, all of Wayne.

Bartenders at the reception were Bob Keating and Pat Garvin, both of Wayne, John Melena of Milford, Ralph Atkins of Lincoln and Marc Lawrence of Waverly.

GIFTS were opened at the Schulz farm on Sunday with family members and attendants present.

The newlyweds traveled to Kansas City and plan a delayed honeymoon in Orlando over the holidays.

They will be making their home at 13668 V St., in Omaha.

### Baptisms

#### Sally Ann Schwedhelm

WINSIDE - Sally Ann Schwedhelm, infant daughter of Mike and LeNell Schwedhelm of Winside, was baptized Aug. 19 at St. Mary's Catholic Church in Wayne. Sponsors were Jennifer Gaines of Norfolk and Bert Schwedhelm of Hoskins.

A baptismal dinner was served afterward in the Schwedhelm home. Guests included grandparents Don and Donna Schwedhelm of Hoskins and Gene and Marcela Masur of Madison, along with the Bill Gaines family and Mary Schnebel of Norfolk. The baptismal cake was baked by Sally's grandmother Masur.

Sally Ann was born July 16 and joins two sisters, 13-year-old Kate and nine-year-old Emily, and two brothers, 11-year-old Joe and five-year-old Tom.

#### Luke Sherman Nelson

HOSKINS - Luke Sherman Nelson, son of the Rev. and Mrs. James Nelson of Hoskins, was baptized during worship services Aug. 26 at Trinity Lutheran Church, Hoskins, with Pastor Nelson officiating. Sponsors were Mr. and Mrs. David Schmiel of Hadar.

The Nelsons entertained for dinner in honor of the occasion. Special guests were Luke's grandmother, Mrs. Fran Nelson of Bismarck, N. D., and great grandmother, Mrs. Norma Pedersen of Valley City, N. D.

Other guests included Mr. and Mrs. Ken Nelson of Bismarck, N. D., Bob Bushaw of Manuel, N. D., Mr. and Mrs. David Schmiel of Hadar, Mr. and Mrs. Steve Bunde of Omaha, Mr. and Mrs. Orville Broekemeier of Norfolk and Mr. and Mrs. Alvin Wagner of Hoskins.

### Senior Citizens

#### Congregate Meal Menu

(Week of Sept. 3-7)

Monday: Center closed in observance of Labor Day.

Tuesday: Hamburger/vegetable casserole, fresh fruit, deviled egg, dinner roll, chocolate mousse.

Wednesday: Pork chops, au gratin potatoes, spinach with vegetable sauce, ribbon gelatin,

whole wheat bread, peaches.

Thursday: Oven baked chicken, wild rice, green beans, citrus salad, whole wheat bread, cupcake.

Friday: Fish on a bun, oven browned potatoes, Brussels sprouts, apricot nectar, bun, ice cream bar.

### Engagements



#### Clark-Kaup

Janet Clark and David Kaup announce their engagement and approaching marriage.

The bride-elect is the daughter of Joanne and Harold Clark of Emerson. Her fiancé is the son of William and Germaine Kaup of Wayne.

Plans are underway for a Sept. 8 wedding.

### New Arrivals

**BARGSTADT** — Mr. and Mrs. Todd Bargstadt, 1503 Grandview, Apt. 2, Papillion, Neb., 68128, a son, Taylor James, 7 lbs., 6 oz., Aug. 21. Grandparents are Roger and Carol Bargstadt, Omaha, and Mr. and Mrs. James O'Connor, Valley. Great grandparents are Mr. and Mrs. Dave Miller and Mr. and Mrs. Alvin Bargstadt, all of Winside.

**EMRY** — Brad and Kathy Emry, 106 Bohem St., Marshalltown, Iowa, a son, Taylor James, 7 lbs., 3 1/2 oz., Aug. 18. Taylor joins Drew, Zach, Annie and Joush. Grandparents are Arnold and Sandra Emry, Wayne.

**MURTAUGH** — Mr. and Mrs. John Murtaugh, Wayne, a daughter, Taysha Helene, 8 lbs., 11 1/2 oz., Aug. 26, Providence Medical Center.

**THIES** — John and Michelle Thies, Warrensburg, Mo., a daughter, Brittany Ann, 7 lbs., 14 oz., Aug. 17. Brittany joins two brothers, three-year-old Jesse and two-year-old Christopher. Grandparents are Eugene and Janet Scott, Osmond, and Eldon and Eva Thies, Winside. Great grandparents are Mabel Wills, Winside, Myrl and Helen Scott, Osmond, and Millard and Esther Weber, Plainview.

### Families attend August reunions

#### Deck reunion

Forty-five persons gathered at the Stanton Fairgrounds clubhouse on Aug. 26 for the annual Deck family reunion. The relatives are descendants of the late Herman and Hulda Deck.

Paul Deck, 93, of Stanton was the oldest member present. The youngest were Melyssa and Michelle Deck, 3 1/2-year-old twin daughters of Rodney and Patty Deck of Winside.

One addition to the family was Taysha Renee Hingst, daughter of Kevin and Joni Kay Hingst, who was born Dec. 20, 1989. The two marriages in the family were Jennifer Pohlmeyer and Delvin Smith of Norfolk, and Pamela Hamm and James Clifton of Pender.

The couple present married the longest were Wilmer and Rosalie Deck of Norfolk, who celebrated their 45th anniversary on March 25, 1990.

A brief business meeting was conducted with minutes of the last meeting read by Fern Deck.

Hosts for the reunion were the families of Henry and Minnie Deck, Myron, Lou and "Skip" Deck of Hoskins, and Lester and Delores Deck of Winside.

The 1991 reunion will be held at the same location on Aug. 25 with families of the late William and Dora Deck serving as hosts, including Norman and Fern Deck and Dale Deck of Hoskins and Wilmer and Rosalie Deck of Norfolk.

#### Rauss-Aurich reunion

The 32nd annual Rauss-Aurich reunion was held Aug. 26 at the Martin Inselman home in Columbus with 34 in attendance.

The oldest family member present was Otto Stueve of Wisner, and the youngest was Natalie Rauss of Wayne. Traveling the furthest distance were Mr. and Mrs. Stu Hollman of Lincoln.

One death and one marriage were recorded during the past year.

Area residents attending the reunion included Mr. and Mrs. Gilbert Rauss, Mr. and Mrs. Walter Baier, Mr. and Mrs. Clarence Rauss, Mr. and Mrs. Merlin Rauss and Natalie, and Mr. and Mrs. Arland Aurich, all of Wayne.

Other relatives came from Beemer, Battle Creek, Wisner, Lincoln, Lindsay, Fullerton and Columbus.

The 1991 reunion will be held the fourth Sunday in August in the Obert Aurich home near Beemer.



Mr. and Mrs. Elmer Koepke

### Koepkes celebrating 50th with reception in Norfolk

Mr. and Mrs. Elmer Koepke of Norfolk will observe their golden wedding anniversary with an open house reception on Sunday, Sept. 9 at the Elks Club in Norfolk.

There will be an open house reception from 3 to 5 p.m., following with dancing from 6 to 10 p.m. with music provided by the Tune Tappers.

Hosting the reception are their children, Leonard and Arleen Pojar

and LeRoy Koepke. There are 10 grandchildren and four great grandchildren.

All friends and relatives are invited, and the honorees request no gifts.

Elmer Koepke and Louise Nurnberg were married Sept. 10, 1940 in Trinity Lutheran Church at Hoskins. They farmed at Winside and Hoskins until moving to Norfolk in 1979.

### Bridal Showers

#### Julie Hoffman

CONCORD - Forty guests from Dixon, Concord, Laurel, Wayne, Wakefield, Lincoln and South Sioux City attended a miscellaneous bridal shower honoring Julie Hoffman of South Sioux City on Aug. 17 at the Evangelical Free Church in Concord.

Decorations were in fuchsia and white. The program included a reading by Ardyce Linn of Laurel, devotions by Yvonne Erwin of Concord, and a duet, "Time for Joy," by Kathy Sanderson and Kelly Brown. Mistress of ceremonies was Deanna Gunnerson.

Hostesses were Yvonne Erwin, Carolyn Hanson and Ave Olson, all of Concord; Muriel Kardell and Beverly Bloom of Dixon; Mary Dahlquist, Donna Forsberg, Betty Dahlquist, Sharon Boysen, Jan Kamrath, Lucille Carlson and Ardyce Linn, all of Laurel; and Jan Fuoss and Deanna Gunnerson of Wayne.

Miss Hoffman, daughter of Jack and Marilyn Hoffman of Oostburg, Wisc., and Scott Kardell, son of Clayton and Margie Kardell of rural Laurel, will be married Sept. 29 in Oostburg, Wisc.



### Jorgensens wed 50 years

**GEORGE AND ADELINE (Hoefener) Jorgensen** of Carroll invite friends and relatives to help them celebrate their golden wedding anniversary on Friday, Sept. 7 during a dance in the Carroll auditorium from 8 to 11:30 p.m. The evening will be hosted by their children, Steven and Gwen Jorgensen of Wayne, and Jesse and Judith Milligan and LaVerie and Kathryn Hochstein, all of Carroll. Jorgensens were married Sept. 5, 1940.

## School Lunches

### LAUREL-CONCORD

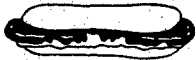
(Week of Sept. 3-7)

**Monday:** Labor Day, no school.  
**Tuesday:** Ham balls with sauce, yellow wax beans, pineapple tidbits, brownies.  
**Wednesday:** Chicken nuggets with honey, peas, mixed fruit, sugar cookie.  
**Thursday:** Beef and gravy, mashed potatoes, applesauce, tea roll.  
**Friday:** Tuna salad sandwich, buttered carrots, apple, gelatin poke cake with whipped cream.  
 Salad plate offered daily  
 Milk served with each meal

### WAKEFIELD

(Week of Sept. 3-7)

**Monday:** Labor Day, no school.  
**Tuesday:** Spaghetti with meat sauce, coleslaw, cinnamon roll, peaches.  
**Wednesday:** Chicken pattie on bun, lettuce and mayonnaise, French fries, baked beans, pears.  
**Thursday:** Pizza pattie, mashed potatoes and butter, roll and butter, pineapple, poorman's cake.  
**Friday:** Hoagie on bun, lettuce and mayonnaise, corn, gelatin with fruit, peanut butter cookie.  
 Milk served with each meal



### WAYNE-CARROLL

(Week of Sept. 3-7)

**Monday:** Labor Day, no school.  
**Tuesday:** Ham and cheese with bun, potatoes au gratin, pears, cookie.  
**Wednesday:** Chicken fried steak, pickle slices, mashed potatoes, peaches, cookie.  
**Thursday:** Taco or taco salad, green beans, applesauce, Rice Krispie bar.  
**Friday:** McRib with bun, barbecue sauce, mashed potatoes, corn, cake with whipped topping.  
 Salad tray offered daily  
 Milk served with each meal

## Spahr awarded scholarship to WSC

WAYNE - Dawn Spahr, Wayne, has been awarded the \$500 Fletcher Farm Service Scholarship to attend Wayne State College in the fall.  
 Spahr, a 1990 graduate of Wayne High School, is the daughter of J. Leroy and Gayle Spahr. She intends to major in business at Wayne State.



Photography: Kevin Peterson

## Many show support for WSC women

APPROXIMATELY \$10,000 WAS RAISED during the second annual Women Helping Women Walkathon as 110 women participated. This is the second year of the annual event. Funds from the walkathon will be used to assist the women's athletic programs and scholarship funding. Last year 53 women and girls walked in the half hour event which raised \$3,000. Pictured were celebrities (left, clockwise) KTVI weathercaster Cathy Egan; (top, left) Miss Nebraska Angi Humphrey; Miss Nebraska Teen U.S.A. Shauna Redfern and Mrs. Nebraska Shawn Voglanz; (above, right: from left) Jan Zeiss and Judy Sorensen.

## Briefly Speaking

### Area quilters meet in Allen

ALLEN - A meeting of area residents interested in quilting was held Aug. 20 at the Allen Senior Center. Plans were discussed to organize a group to be involved in a quilt show to be held during Allen's centennial celebration in 1991.  
 Sally Schroeder of Hartington spoke to the group and showed various quilts and quilting methods.  
 An organizational meeting will be held Monday, Sept. 17 at 7:30 p.m. at the Allen fire hall. Persons wishing additional information are asked to contact Sharon Brentlinger, Jean Morgan or Carol Jean Stapleton.

### Fields note 50th year

WINSIDE - Mr. and Mrs. Otto Field of Winside celebrated their 50th wedding anniversary on Aug. 12 with a noon family dinner at The Hotel in Wakefield.  
 Attending were their son Duane Field and family of Winside, daughter Donna Frevert and family of Wakefield, and grandson Dennis Bilbrey and daughter Cassie of Wakefield.  
 Otto Field and Ella Bargholz were married Aug. 12, 1940 at Redeemer Lutheran Church in Wayne.

### Carroll woman observes 85th

CARROLL - Mrs. Esther Batten of Carroll observed her 85th birthday with an open house reception at her home on Sunday. Hostesses were Mrs. Will Davis and Ellen Davis of Wayne, and Mrs. Tillie Jones and Mrs. Etta Fisher of Carroll.  
 The 60 guests attended from Columbus, Grand Island, Norfolk, Winside, Wayne, Randolph and Carroll.  
 Mrs. Batten received telephone greetings from her children in California, Minnesota and Saudi Arabia.

## Community Calendar

**SUNDAY, SEPTEMBER 2**  
 Alcoholics Anonymous, Fire Hall, second floor, 8:30 a.m.

**TUESDAY, SEPTEMBER 4**  
 Sunrise Toastmasters Club, City Hall, 6:30 a.m.  
 Hillside Club, Elaine Vahlkamp, 2 p.m.  
 Villa Wayne Tenants Club weekly meeting, 2 p.m.  
 Tops 782, St. Paul's Lutheran Church, 6 p.m.

**WEDNESDAY, SEPTEMBER 5**  
 Villa Wayne Bible study, 10 a.m.  
 Alcoholics Anonymous, Wayne State College Student Center, noon  
 Presbyterian Women's potluck luncheon, 1 p.m.  
 Cuzins' Club, Frances Nichols, 1:30 p.m.  
 Tops 200, West Elementary School, 6:30 p.m.  
 Alcoholics Anonymous, Fire Hall, second floor, 8 p.m.  
 Al-Anon, City Hall, second floor, 8 p.m.

**THURSDAY, SEPTEMBER 6**  
 Logan Homemakers Club guest day

## Northeast workshop

### OSHA's hazard seminar slated for September 19

AREA - Northeast Community College will offer OSHA's Expanded Hazard Communication Standard for Managers and for Employees on Sept. 19. The seminar for managers will begin at 9 a.m. and end at noon and the seminar for employees will begin at 1 p.m. and end at 4 p.m.

The objective of the seminars is to provide participants with an in-

depth view and discussion concerning the OSHA Hazard Communication Standard. Chemical manufacturers' responsibilities, company's responsibilities, employees' responsibilities and warning labels will be discussed at both seminars.

For more information or to pre-register, telephone the college at 644-0600 by Sept. 14 to ensure adequate materials.

## Congratulations to All of Our Kids Contest Winners from Jammer Photography!



**Ashley Patefield**

daughter of Randy and Sherrie Patefield of Laurel, 5th Place National Winner: \$100.00 Savings Bond and a My First Sony Tape Recorder. One of the top three local winners: \$25.00 Gift Certificate to Kid's Closet and one 11x14 Color Portrait both courtesy of Jammer Photography.



**Ashley Tiedgen**

daughter of Tom and Denise Tiedgen of Lincoln. Honorable Mention in Nation Contest: Land's End Back Pack. One of three local winners: \$25.00 Gift Certificate to Kid's Closet and one 11x14 Color Portrait both courtesy of Jammer Photography.



**Nolan Fillipi**

son of Kevin and Sheri Fillipi of Thurston. One of the top three local winners: \$25.00 Gift Certificate to Kid's Closet and one 11x14 Color Portrait both courtesy of Jammer Photography.

National Honorable Mention: Land's End Back Pack

Matthew Trevett — Wayne  
 Molly Snyder — Wayne  
 Ashley Tiedgen — Lincoln  
 Bryce Whalen — Belden

Stephanie Thomsen — Pender  
 Michael Schwarten — Wayne  
 Ross Hansen — Wakefield

**JAMMER PHOTOGRAPHY**  
 217 MAIN • WAYNE, NEBRASKA 68787  
 PHONE 402-375-2363

## THE WAYNE HERALD

AND MARKETER

114 Main Street Wayne, NE 68787 375-2600  
 PUBLICATION NUMBER USPS 670-560



**PRIZE WINNING NEWSPAPER**  
 1990 Nebraska Press Assn.

**National Newspaper Association**  
 Sustaining Member 1990

**Serving Northeast Nebraska's Greatest Farming Area**

Established in 1875; a newspaper published semi-weekly, Monday and Thursday (except holidays). Entered in the post office and 2nd class postage paid at Wayne, Nebraska 68787. Also publisher of The Marketer, a total market coverage publication.

POSTMASTER: Send address change to The Wayne Herald, P.O. Box 70, Wayne, Nebraska, 68787

**Official Newspaper of the City of Wayne, County of Wayne and State of Nebraska**

### SUBSCRIPTION RATES

In Wayne, Pierce, Cedar, Dixon, Thurston, Cuming, Stanton and Madison Counties; \$23.00 per year \$20.00 for six months. In-state: \$25.50 per year, \$22.00 for six months. Out-state: \$30.50 per year, \$27.00 for six months. Single copies 45 cents.

Publisher - Gary Wright  
 Comptroller - Peggy Wright  
 Mng. Editor - Mark Crist  
 Asst. Editor - LaVon Anderson  
 Sports Editor - Kevin Peterson  
 Ad Executive - Jan Bartholomaus  
 Receptionist - Jennifer Cole  
 Bookkeeper - Linda Granfield  
 Typesetters  
 Alyce Henschke & Shelley Kirk  
 Composition Foreman - Judi Topp  
 Press Foreman - Al Pippitt  
 Darkroom Technician - Jeff Sperry  
 Commercial Printers  
 John Moore & Marilyn Gehner  
 Mailroom Manager - Doris Claussen  
 Mailroom Asst. - Cyndee & Les Lage  
 Press Room Asst. - Kevin Baldrige  
 Gen. Asst. - Mike Smith & Dale Kruse  
 Maintenance - Mary & Michael Enyart  
 Special Project Asst. - Lois Green,  
 Glenda Schluns & Joni Holdorf



## Wayne State Wildcats set to embark on Omaha to kickoff football year

The Wayne State College season-opening football game at the University of Nebraska at Omaha may be listed as a road game, but for 15 Wildcats it's a homecoming.

Coach Dennis Wagner's Wildcats feature 15 players from the Omaha area, including five starters on defense and two on offense. Bragging rights in the talent rich Omaha area are at stake in the September 1 encounter.

"Omaha is one of our main recruiting bases in Nebraska," Wagner said. "For us to compete in NCAA Division II, we need to compete with UNO and let people know we are an up-and-coming program."

The Wildcat linebacking corp features three Omaha natives in Mo Walker, Bob Sterba and Nebraska-transfer Jerry Kleidosty. Walker, called the best athlete on team by Wagner, may miss the opener following preseason surgery. The best friend duo of Sterba, an All-American last year, and Kleidosty hope to run into some familiar faces in the opener.

All-America candidate Randy Rouse anchors the defensive line at nose tackle while Mike Ware patrols the secondary. Academic All-American Mark Linder and Henry Rehberg give the Wildcats book-end Omahans at the offensive guard spots. Eric Sanders, Rich Shepard and Dave Telecky provide the depth up front.

The remaining Omahans on the Wayne State squad are Doug Churchill, Jason Dworak, Todd Schmaderer, Leon White, and Eugene Young. Kickoff is slated for 1:30 p.m. at Al Caniglia Field in Omaha.

Looking at the offensive backfield for Wayne State preseason All-America tailback Troy Jackson returns after rushing for 907 yards and five touchdowns in 1989. He's joined by quarterback Gale Lawton who started the final seven games last season. Lawton passed for 1,037 yards and added 806 in rushing, falling just short of the elite 1000 yard club.

The dynamic duo of Jackson and Lawton accounted for 88.3 percent of WSC's 3,327 yards in 1989. Sophomore Lamar Daniels will bat-

tle freshman Jason Garnand and Brian Jordan for the starting "A" back position.

Looking at the wide receiver position Bill Blondin is the lone veteran wide receiver. Blondin caught 30 passes for 499 yards last season. He will be joined by Martin Goolsby and freshman Lee Harper.

The offensive line will be anchored by Mark Linder. He will be joined on the right side by junior college transfer Eric Colbert. The remainder of the Wildcat front line features sophomores John Gabriel at left tackle, Henry Rehberg at left guard, and Marty Jonas at center.

All conference standout Randy Rouse will lead the defense from his tackle position. The three-year starter finished second on last year's team with 88 tackles. Rouse is also the strongest player on the Wildcat squad benching over 450 lbs., and squatting nearly 700 lbs.

Scott Vokoun returns as a starting tackle after posting 45 stops in '89. Bill Hendricks and junior John Lanier will battle sophomore Jeff Holdsworth for a starting position.

The linebacking corp should be the Wildcats strength with All-American Bob Sterba and All-America candidate Mo Walker returning. Sterba led the Wildcat defense with 131 tackles, including 82 solo stops last year.

Jerry Kleidosty transferred from Nebraska and should make immediate impact. Juniors Mike Kennedy and Jeff Brownfield will battle for starting time. Freshman Pat Murray and sophomore Cory Reeder are versatile reserves.

Junior Mike Thorell and sophomore Mike Ware anchor a young WSC secondary. Thorell picked off three passes and recorded 26 tackles last year while Ware added two interceptions and 33 stops. Joel Ott returns after injuring his knee in last year's opener.

Junior College transfers Terry Bear, Todd Alberti, Bruce Eason and Chris Nelson are the pride of the 1990 recruiting class.

Sophomore Blain Branscum returns as the placekicker after connecting on 6-11 field goals and 13-15 PAT's. Freshman Mark Jacona and B.J. Buchanan will battle for punting honors.



Photography: Kevin Peterson

**THE WIDE RECEIVERS** on the WSC team this year include from back left to right: Todd Schmaderer, Eric Nemeth, Lee Harper, Jason Garnand, Jamie Einrem and Leon White. Front row: Lamar Daniels, Tom Kleespies, Bill Blondin, Marlon Goolsby, Brian Jordan, Kevin Binon.



**THE DEFENSIVE LINEMAN** on the Wildcat squad this year include from back row left to right: Jeff Lutt, Matt Holly, Mike Einsphar, Brad Ottis, John Lanier, and Adam Boryca. Front row: Jeff Holdsworth, Scott Vokoun, Randy Rouse, Bill Hendricks, and Terry Berks.



**MEMBERS OF THE QUARTERBACK CREW** for WSC this year include from left to right: Clint Williams, Mark Jacona, Gale Lawton, Dave Mentzer and Jason Ensminger. Lawton started WSC's final seven games last season and looks to start for WSC this season.



**THE RUNNING BACK CREW** for the Wayne State Wildcats in 1990 will rely with these four including from left to right: Kip Harris, Todd Schmaderer, Kurt Jensen and Troy Jackson.



**THE OFFENSIVE LINEMAN** for WSC will be from back row left to right: Marty Jonas, Rich Shepard, Jay Snider, Eric Sanders, John Gabriel, Frank Komasincki and Joe Chohon. Front row: Dave Telecky, Eric Colbert, Scott Klute, John Etgen, John Gerths, Mike Wilson, and Art Spelts.



**THE DEFENSIVE BACKS** for WSC include from back row left to right: Mike Thorell, Todd Alberti, Cory Spangler, Mike Ware, Chris Nelson, and Bruce Eason. Front row: Joel Ott, Terry Bear, Jeff Mullins, Sean Francisco, Jeff Mullins, Troy Carmichael and Travis Roth.

### City rec volleyball

WAYNE-Co-ed recreation volleyball will begin on Wednesday, Sept. 5 from 7-10 p.m. at the city auditorium. Women's volleyball will begin on Monday, Sept. 10 from 7-9 p.m. at the same place.

# SPORTS

## WSC volleyball team ready to begin season

The Wayne State Wildcat volleyball team will open up 1990 season play on Saturday when they host South Dakota State and along with the new season comes a new face in the form of head coach Nancy Clark.

Clark, 30, was an assistant at Western Kentucky University for a year following a six-year stint as volleyball and softball coach at Newberry College in North Carolina.

Clark steps into a program at Wayne State which went 13-25 last season but returns 10 letterwinners from that squad. "Hitting and blocking are the team's strongest points right now," Clark said. "The women are in great shape. Everyone's lost weight and gained muscle in the off season."

Clark is expecting her squad to battle Doane and Hastings for supremacy in District 11 play this

season. All-District middle hitter Shelly Lueders, 6-1, returns to lead the Wildcats. Lueders, a first-team selection on both the All-District and All-Independent teams, set WSC records with 920 attacks and 399 kills in 1989.

"We gear our offense around Shelly," Clark said. "But she is a real team player." Senior leadership will also be provided by Amy Budde, 5-10, Stacey Deterding, 5-11, Buffy Romshek, 5-9, Pam Sillivan, 5-6, and Angie Wilbur, 5-4.

Junior letterwinners Kristi Jaminet, 6-0, and Nancy Kennedy, 5-4, along with sophomore Marti Hunt, 5-3, round out the returning veterans. "If we can quicken up our offense, we have an excellent chance of beating anyone we play," Clark said.

The Wildcats have 10 home contests in 1990 with weekday contests starting at 6:30 p.m. in Rice Auditorium.



Photography: Kevin Peterson

MEMBERS OF THE Wayne State volleyball team this year include from back row left to right: Nancy Kennedy, Amy Budde, Cassie Vesic, Shelly Lueders, Kristi Jaminet, Stacey Deterding, Tracy Kuester, Buffy Romshek, Lisa Skradski and Kris Price. Front row: Karen Meier, Pam Silliven, Angie Wilbur, Stacey Wattier, Cori Weinfurter, Tracy Atkins, Amy Newton, Angela Janovec and Lisa Kresha.

## Fourth Jug team places at state

The Fourth Jug/Nutrena Feeds softball team captured fifth place honors at the Class D-Rec USSSA State Tournament held in Lincoln recently. The host team received a trophy for their efforts and went 5-2 in the process.

They won their opener 15-9 as Jess Zeiss, Aaron Schuett, Mark Ganseboom and Herman Carroll all enjoyed a 3-4 outing from the plate. Rod Cook, Steve Sorensen and Mike Sherer each connected for two hits while Darrin Blackburn laced a single in two at-bats.

Fourth Jug lost its second game 8-2 as a Falls City team gave up two runs to Wayne in the first inning but shut them down from then on. Fourth Jug notched just seven hits in the game compared to the 19 they belted out in game one. Al Nissen led the squad despite the loss with two hits.

Fourth Jug/Nutrena Feeds bounced back the next game and scored nine runs in the first inning which was all they needed en route to a 9-1 victory. Wayne notched 16 hits in the game with Jess Zeiss and Dave Welsh leading the way with three each. Rod Cook, Aaron Schuett, and Mike Sherer each had two hits.

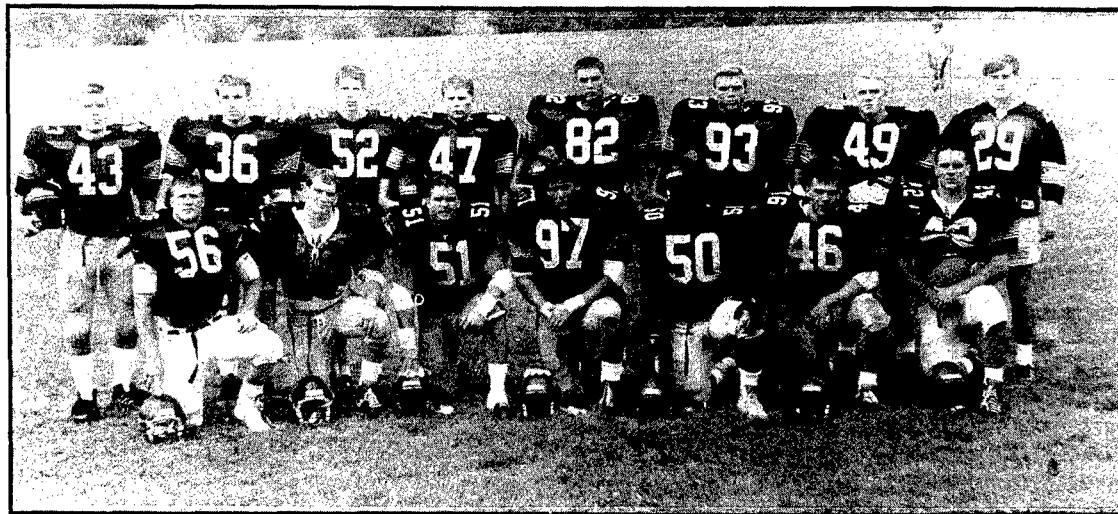
The locals then won 14-9 over a team called W. C.'s Lounge as they belted out 16 hits led by Al Nissen who went 4-4. Rod Cook had three hits in the game while Wes Lueth and Mike Sherer had two apiece.

Fourth Jug/Nutrena Feeds then defeated a Columbus team 5-3 as the locals scored three times in the first and once each in the second and third innings. Wayne had 10 hits in the game with Rod Cook leading the way with three. Herman Carroll and Al Nissen each backed up the lead off man with two hits apiece.

In the next to the last game played by the Fourth Jug/Nutrena Feeds, the locals defeated the Falls City team that had defeated them in the second round. Wayne won the rematch by a 9-6 margin as they pounded out 16 hits led by Doug Carroll's 3-3 outing which included a single, double and a triple.

Rod Cook, Aaron Schuett and Mike Sherer each had two hits. In Wayne's final game at the state tournament they were defeated by a team called X-cell by a 7-6 margin. Fourth Jug had 12 hits in the game led by Steve Sorensen's 3-3 performance. Aaron Schuett and Wes Lueth each had two hits to aid Fourth Jug/Nutrena Feeds cause.

Team members of Fourth Jug/Nutrena Feeds which aided in the fifth place finish at state include: Jess Zeiss, Rod Cook, Herman Carroll, Doug Carroll, Al Nissen, Aaron Schuett, Mark Ganseboom, Dean Carroll, Wes Lueth, Steve Sorensen, Mike Sherer, Jeff Zeiss, Ron Fink, Dave Welsh, Darrin Blackburn and Danny Frevet.



THE LINEBACKERS FOR WSC in 1990 will be from back left to right: Pat Hoefener, Bill Heimann, Eugene Young, Jeremy Hook, Jeff Clymer, Greg Amundson, Jim Scott, and Cory Clements. Front row: Jerry Kleidosty, Jeff Brownfield, Bob Sterba, Cory Reeder, Pat Murray, Scott Fleming, and Mike Kennedy.

### WSC football

- Sept. 1 — at University Nebraska-Omaha
- Sept. 8 — Evangel
- Sept. 15 — at Minnesota Morris
- Sept. 22 — Bemidji
- Sept. 29 — at Emporia State
- Oct. 6 — at Chadron State
- Oct. 13 — at Missouri Western
- Oct. 20 — Kearney
- Oct. 27 — Ft. Hays
- Nov. 3 — at Benedictine College
- Nov. 10 — Northwestern Iowa

### WSC volleyball

- Sept. 1 — South Dakota State
- Sept. 4 — at Dakota Wesleyan
- Sept. 6 — Nebraska Wesleyan
- Sept. 7 — at South Dakota State
- Sept. 11 — at Midland/Morningside
- Sept. 14-15 — at Neb. Wesleyan
- Sept. 17 — Doane
- Sept. 21-22 — at Augustana
- Sept. 25 — Mt. Marty
- Sept. 27 — Dana
- Sept. 28-29 — at NAIA Tourney (Peru)
- Oct. 2 — Morningside
- Oct. 4 — at Briar Cliff
- Oct. 6 — at Midland/Belleuve
- Oct. 9 — at Mt. Marty
- Oct. 11 — Dakota Wesleyan
- Oct. 13 — at Hastings
- Oct. 16 — at Morningside
- Oct. 19 — at Kearney State
- Oct. 23 — Briar Cliff
- Oct. 25 — St. Mary's
- Oct. 27 — Chadron
- Oct. 30, Nov. 2-3 — NAIA Playoffs



THE WAYNE STATE football coaches include from back row left to right: Dan Prososki, Keith Simons, Dennis Wagner, and Bill Briggs. Front row: Scott Wilkinson, Rick Moorman, Scott Frear, Kyle Eller and Mark Gritton. Dennis Wagner will enter his second year as the Wildcat head coach and hopes to improve upon last year's 4-7 mark. The Wildcats will play six home games this season and travel for five away contests. The first home game is slated for Sept. 8 against Evangel in a 1:30 p.m. kickoff at Memorial Field.

## Hoskins holds its annual play day

HOSKINS -- At its 25th annual horse show Aug. 19, those who attended the Hoskins Saddle Club event got to see several winners.

Winning the 1989-90 halter title was Becky Appel, Hoskins as Camala Behmer, Hoskins, won the 1988-older halter competition. Placing fourth in the 1988-older halter competition was Erin Gregg, Laurel.

In the pony halter 56-inch and under, first place went to Diane Storm, North Bend while Jami Behmer, Hoskins, placed fourth.

ADAM BEHMER placed second in the junior potato race in the 10 and under category while he placed fourth in the potato race competition for youth ages 11-14 years. Arlan Sellin, Hoskins, placed first in the senior pleasure 15-up while Cam Behmer, Hoskins, placed third and Rocky Mohr, Laurel, placed fourth.

In junior pleasure 11-14 years competition, Stacey Preston, Wakefield, placed fourth.

In the barrel crawl competition for youth age 10-under, Tony Graf, Carroll, placed second. In the barrel crawl ages 11-14 years John Behmer, Hoskins, placed first.

Mandi Hank, Carroll, was second and third went to Erin Gregg, Laurel. Fourth place in the competition went to Matt Behmer, Hoskins.

In the junior hat race, 14 and under, Ryan Ekberg, Wakefield, placed first while in the flag race, Mark Fleer, Hoskins, placed third. Peggy Behmer, Hoskins, placed fourth in the scramble egg race.

IN THE WESTERN reining competition, Rocky Mohr, Laurel, placed first while Tom Etter, Wayne, was second. Roger Langenberg and Tad Behmer, both of Hoskins, placed third and fourth, respectively.

In the junior poles competition for youth ages 11-14, first went to T.J. Preston, Wakefield. In the serpentine race, Mark Fleer, Hoskins, placed second and in the junior barrels, 10 and under, Kristin Preston, Wakefield, placed third. Ryan Ekberg, Wakefield, placed third in the junior barrels, ages 11-14.

In the horseshoe pair, Mark Fleer, Hoskins, placed fourth and in the four-in-line competition, Erin Gregg, Laurel, placed third. In the baton competition, Fleer also placed third.



THE PUNTING AND kicking chores for the Wildcats will be done by these five individuals including from left to right: Blain Branscum, Chris Fehn, B. J. Buchanon, John

### Men's over 40 league

WAYNE-All men aged 40 and over are encouraged to sign up to play "Socko" which is slow pitch softball with some added rules to protect the players. All rules will be explained at Overin Field on Monday, Sept. 10 at 6:30 p.m. Those interested in playing should be present.

### Tailgate party in Schuyler

WAYNE-Wayne football fans and students are invited to take part in a tailgate party in Schuyler this Friday from 6-7:15 p.m. The tailgate party will take place in the parking lot north of the football field. Hamburgers and pop will be served for a modest fee.

### HIGH YIELD/ CERTIFICATES OF DEPOSIT

	CURRENT RATE	EFFECTIVE YIELD
1 YR	8.00%	8.24%
5 YR	8.00%	8.24%

MINIMUM DEPOSIT \$5,000.00  
RATES EFFECTIVE THROUGH SEPTEMBER 4, 1990

**SN** The State National Bank and Trust Company  
Wayne, NE 68787 • 402/375-1130 • Member FDIC  
Main Bank 116 West 1st • Drive-In Bank 10th & Main



# FALL SPORTS

The following businesses support  
**WAKEFIELD VOLLEYBALL**

- Anderson Lumber Co.
- Benne's Package Liquor
- Bressler-Humlicek Funeral
- Dr. Paul V. Byers DDS
- Fair Store
- Wisner Farm Service  
(Box 148, Wakefield)
- Kratke Oil
- Salmon Well Co.
- Wakefield Bowling, Inc.
- Wakefield National Bank
- Milton G. Waldbaum Co.
- Tooties Beauty Shop
- Nixon Auctioneers
- Dirty Harry's



MEMBERS OF THE Wakefield volleyball team include from back row left to right: Coach Arnie Cerny, Sarah Salmon, Lisa Blecke, Renee Nixon, Wendy Kratke, Heidi Muller, Dorena Murfin, Krista Wilbur, Connie Witt, and head coach Paul Eaton. Middle row: Kelly Ekberg, Kristen Miller, Melissa Haglund, Kall Baker, Heather Gustafson, Valerie Fischer, Karla Boeckenhauer and Becky Stout. Front row: Megan Sandahl, Betsy Erickson, Lisa Anderson, Christy Otte, Cindy Torczon, Kathy Otte and Maria Eaton.

## Wakefield volleyball team inexperienced

Laurel will not be the only volleyball team in the area that must deal with the loss of every starter from a year ago. Wakefield head volleyball coach Paul Eaton will enter his sixth year as helmsman of the Lady Trojans and this will be his first season where he doesn't return any starters.

In his previous five campaigns Eaton's troops have won 81 games compared to just 13 losses. Arnie Cerny will enter his seventh campaign as assistant coach for Eaton.

"Youth and inexperience are

the two key words that describe our team this season," Eaton said. "We lost every starter from last year's team which included eight seniors."

One of the major reasons that the experience level is down is because there are only three senior girls out for volleyball in Christy Otte, a setter, Wendy Kratke, a hitter/spiker and Renee Nixon, a server/hitter.

"There are only seven senior girls in the whole class," Eaton said. "It's just one of those things with a

real small class. Traditionally Wakefield is known for its predominantly senior oriented squad but not this year."

There are a total of 23 girls out for volleyball this season. Eaton sees Coleridge, Winside and Emerson as three of the stronger teams on his schedule. Eaton will also be assisted by Julie Rose who used to be a volleyball player for Wakefield and by Kelly Bartling.

Aug. 30 — Winside  
Sept. 6 — at Lyons

Sept. 8 — at S. City North  
Tourney  
Sept. 11 — at Winside Tourney  
Sept. 13 — at Wausa  
Sept. 18 — at Hartington  
Sept. 27 — Wynot  
Oct. 2 — at Osmond  
Oct. 4 — Laurel  
Oct. 9 — at Walthill  
Oct. 11 — Coleridge  
Oct. 16 — at Bancroft-Rosalie  
Oct. 18 — Emerson-Hubbard  
Oct. 22-23 — Lewis & Clark  
Conference



The following businesses support  
**WINSIDE VOLLEYBALL**

- Winside Grain & Feed
- Winside Stop Inn
- Schumacher Funeral Home  
(Wayne, Carroll, Winside, Laurel)
- Lee & Rosie's
- Ray's Locker
- Oberle's Market
- Farmers Coop  
(Pilger & Winside)
- McBride-Wiltse Mortuary  
(Wayne, Winside, Laurel)
- Winside Alfalfa Dehy, Inc.
- Country Ceramics
- Jacques Seed Co.
- Wacker's Farm Store
- Winside State Bank (FDIC)  
(Warnemunde Insurance & Real Estate)
- Winside Motor
- Winside Animal Clinic
- Wilva's Beauty Salon
- Schelle's Saloon
- Terry & Mike Thies Haymoving & Baling
- LaSalon Family Haircare  
(Hoskins & Winside)
- Hoskins Manufacturing Co.
- Commercial State Bank (FDIC)  
(Hoskins)
- Apache Manufacturing  
(Hoskins)
- Pat's Beauty Salon  
(Hoskins)
- The Village Seamstress  
(Hoskins)
- Big Ern's  
(Hoskins)

The following businesses support  
**WAYNE-CARROLL GIRL'S GOLF**

- Arnie's Ford Mercury
- Terra International, Inc.
- Northeast Nebraska Insurance Agency
- Amber Inn Motel
- 4th Jug
- Wayne Auto Parts
- Schumacher Funeral Home  
(Wayne, Carroll, Laurel, Winside)
- Wayne Care Centre
- Complete Computers
- Pamida Discount Center
- Logan Valley Implement, Inc.
- First National Bank
- Bill's GW
- Sav-Mor Pharmacy
- KTCH Radio
- The Wayne Herald-Marketer
- Wayne Vision Center
- State National Insurance
- Office Connection
- Jones Intercable
- Koplin Auto Supply
- The Diamond Center
- Johnson's Frozen Foods
- Restful Knights
- Clarkson Service
- Paç 'N' Save
- Hardee's
- Morris Machine Shop
- Fredrickson Oil Co.
- Doescher Appliance
- TWJ Feeds-Carroll
- Tom's Body Shop
- Peoples Natural Gas Co.
- Four In Hand
- First National Agency
- State National Bank and Trust Co.  
(Member FDIC)
- Wayne Sporting Goods
- Ellingson Motors



MEMBERS OF THE Winside volleyball team include from back row left to right: Head coach Paul Giesselmann, Kelly Pichler, April Thies, Shanon Holdorf, Wendy Rabe, Patty Oberle, Christy Thurstensen, Tawnya Krueger, and assistant coach Nancy Loterbauer. Front row: Yolande Sievers, Jennie Hancock, Jenny Jacobsen, Holly Holdorf, Chris Colwell, Karl Pichler, Catherine Bussey, and Stacy Bowers.

## Numbers down but quality higher at Winside

Fourteen girls at Winside High School will represent the Wildcat rendition of the volleyball team this season for head coach Paul Giesselmann, but Giesselmann will be the first to tell you that this year's group's numbers mean little compared to the quality.

The Wildcats return six of their top eight players from a year ago and Giesselmann has already filled the vacancies of seniors Tina Hartmann and Jenny Topp who were lost to graduation.

The top returnee is junior sensation Jenny Jacobsen. She will be joined by seniors Kelly Pichler, Shannon Holdorf and April Thies

along with juniors Patty Oberle and Wendy Rabe. Sophomore Holly Holdorf and freshman Kari Pichler are also expected to make an impact on the varsity rotation.

"The girls have worked very hard in the off season," Giesselmann said. "Our off season conditioning was very good." The Winside gals attended team camp at UNO and Giesselmann said his squad fared very well against Class A teams.

"I think one of the biggest attributes to our program has been the weightlifting," Giesselmann said. "You can tell in practice that weightlifting is starting to pay off."

Giesselmann feels if his squad stays healthy and with a little luck, the future looks pretty good. "Last year's team was good but we went out every game hoping to be competitive," Giesselmann said. "This year's team expects to win every time they hit the floor."

Coleridge, Wakefield and Allen are three of the teams Giesselmann expects to give his Wildcats the strongest of matches. "We added a tournament in Battle Creek in early September," Giesselmann said. "We didn't get into the tournament to think we are going to win but it will help our team playing the likes of Battle

Creek and Cedar Catholic." Giesselmann will be assisted this season by Nancy Loterbauer.

Aug. 30 — at Wakefield  
Sept. 4 — Osmond  
Sept. 6 — at Laurel  
Sept. 11 — Winside Tourney  
Sept. 18 — Wausa  
Sept. 20 — Stanton  
Sept. 27 — Coleridge  
Oct. 4 — at Wynot  
Oct. 11 — Allen  
Oct. 13 — at Hartington Tourney  
Oct. 16 — at Hartington  
Oct. 22-23 — Conference  
Tourney

## Four golf letterwinners return in 1990

Wayne head girls golf coach Richard Metteer enters his sixth season as coach of the girls golf program and this season he sees four returning letterwinners among the group.

Heading the list of returnees is Cher Reeg who will seek her fourth consecutive trip to the state tournament. Reeg and Jessica Rothfuss were a part of the 1988 state champion golf team which also included Holly Paige, Ann Perry and Jill Jordan.

Jennifer Chapman and Lisa Casey lettered last season as sophomores and will look to improve even more in 1990. There are a total of nine girls out for the golf team this year and the fifth spot on the varsity squad will be determined through playoffs by Jill O'Leary, Kris Summerfield, Beth Dorcey, Brenda Agenbroad and Tasha Luther.

The state tournament will be in York this year but the district site had not yet been determined at press time. Wayne will take part in five duals this season and two invitationals. The Blair Invitational will be on Sept. 14 and the Wayne Invitational will be held on Sept. 22.



MEMBERS OF THE Wayne girls golf team this fall include from back left to right: Lisa Casey, Jennifer Chapman, Cher Reeg, Jessica Rothfuss, and Tasha Luther. Front row: Jill O'Leary, Kris Summerfield, Beth Dorcey and Brenda Agenbroad.

Aug. 30 — at Norfolk  
Sept. 4 — at Lakeview  
Sept. 13 — Norfolk  
Sept. 14 — at Blair Invite  
Sept. 18 — at Stanton  
Sept. 22 — Wayne Invite  
Oct. 1 — Stanton  
Oct. 3-5 — Districts  
Oct. 11 — State

# FALL SPORTS

The following businesses support  
**WAYNE-CARROLL VOLLEYBALL**

- Arnie's Ford Mercury
- Amber Inn Motel
- Terra International, Inc.
- Ellingson Motors, Inc.
- Wayne Auto Parts
- Schumacher Funeral Home  
(Wayne, Carroll, Laurel, Winside)
- Wayne Care Centre
- Complete Computers
- Pamida Discount Center
- Logan Valley Implement, Inc.
- First National Bank  
Bill's GW  
4th Jug
- Sav-Mor Pharmacy
- KTCH Radio
- The Wayne Herald-Marketer
- Wayne Vision Center
- State National Insurance
- Office Connection
- McBride-Wiltse Mortary  
(Wayne, Winside, Laurel)
- Jones Intercable
- Koplin Auto Supply
- The Diamond Center
- Johnson's Frozen Foods
- Restful Knights
- Clarkson Service
- Pac 'N' Save
- Hardee's
- Morris Machine Shop
- Fredrickson Oil Co.
- Doescher Appliance
- TWJ Feeds-Carroll
- Tom's Body Shop
- Peoples Natural Gas Co.
- Four In Hand
- First National Agency
- State National Bank & Trust  
(Member FDIC)
- Wayne Sporting Goods

The following businesses support  
**ALLEN VOLLEYBALL**

- Security State Bank (FDIC)
- Hair Country
- Tri County Insurance  
(Ken Linafelter, agent)  
(Phone 635-2403 or 287-2060)
- Village Inn
- Cash Store
- Logan LTD Feed Yard

The following businesses support  
**LAUREL-CONCORD VOLLEYBALL**

- State Farm Insurance  
(Annette Pritchard, agent)
- Laurel Veterinary Clinic  
(Dr. Walter Chace & Dr. Brian Schantz)
- Security National Bank (FDIC)
- Security National Insurance Agency
- Dr. Lee Dahl, DDS
- Laurel Lockers
- Gade's Food Center
- Circle H Service
- North Side Grain
- Wiemer's Trucking Agency
- S & S Insurance Agency
- Urwiller Oil & Fertilizer
- Dixon Elevator
- Steve's Repair  
(Concord, Nebr.)
- (Car & Truck Repair, Welding - All Types)
- Concord Cafe  
(Naomi Peterson/Fern Erickson)



MEMBERS OF THE Wayne-Carroll volleyball team this season include from back left to right: Head coach Marlene Uhing, Kristine Swanson, Kim Liska, Rachel Haase, Leslie Spethman, Erin Pick, Liz Reeg, Danielle Nelson, Angie Thompson, and coach Dale Hochstein. Middle row: Kim Kruse, Lana Casey, Christi Carr, Danielle Fallesen, Jennifer Hammer, Kari Lutt, Deanna Schluns and Teresa Bennett. Front row: Teresa Witkowski, Audra Sievers, April Huyck, Sarah Hampton, Twilla Schindler, Jennifer Thompson, and Tara Erleben.

## Wayne volleyball team looks to improve in 1990 season

The Wayne volleyball team will have an unusually low amount of participants this year with 23 girls donning the traditional blue and white colors.

Even with the low numbers head volleyball coach Marlene Uhing says her team will "not lack depth on the varsity level." "We have a lot of question marks that need to be answered at this time," Uhing said. "But I think that if we develop and mature we could be a good team toward the end of the season." The end of the season of course means district time.

Uhing said she doesn't know how good her squad will be early as they try to fill some gaps left by the likes of Teresa Ellis who was lost to graduation last spring. Ellis

incidentally, will try her talents at Northeast Community College in Norfolk in volleyball this fall.

"Right now we have to come up with a consistent setter," Uhing said. "We have three right now who are fighting for the job and I see good qualities in each of them that I like but it's just a matter of who does what in practice. Uhing also noted that none of the three have much varsity experience at setting."

Danielle Nelson, Liz Reeg and Rachel Haase will be looking to fulfill that role. Some of the qualities Uhing looks for in her setters is mental toughness, quickness, leadership ability, communication and of course good setting techniques.

Erin Pick and Jennifer Hammer will look to be the hitting leaders for the Blue Devils as will Kari Lutt and Deanna Schluns. Teresa Bennett will also be looking to provide leadership from a starting role. Four juniors will also be looking to add depth and power and they include Kim Liska, Danielle Fallesen, Lana Casey and Christie Carr.

"The seniors are doing an outstanding job of providing the much needed leadership right now," Uhing said. Wayne went to team camp at Midland this past summer and Uhing said she worked with the girls in groups of four during the first few weeks of the summer.

Uhing noted that Cedar Catholic will be a very strong team as will Norfolk and O'Neill. Among

the district teams Wayne will face later this season Columbus Scotus returns an all senior line-up.

Aug. 30-Sept. 1 — at Beemer Invite

Sept. 4 — at Schuyler  
Sept. 8 — at North Bend Invite  
Sept. 13 — Pierce  
Sept. 18 — Norfolk  
Sept. 22 — Wayne Invite  
Sept. 25 — at West Point

Oct. 1-2 — at So. Sioux City Invite  
Oct. 4 — at O'Neill  
Oct. 9 — at Hartington C.C.  
Oct. 18 — Conference  
Oct. 23 — South Sioux City  
Oct. 29-Nov. 1 — Districts  
Nov. 9-10 — State



MEMBERS OF THE Allen girls volleyball team include from back row left to right: Head coach Gary Troth, Carla Stapleton, Heidi Lund, Tami Malcom, Malinda Petit, Robin Schroeder, Alyssa McGrath, Lisa Sullivan, and Wendy Boyle. Middle row: Stacy Carlson, Sonya Plueger, Tammy Stewart, Shawna Hohenstein, Hillery Blair, Marcia Hansen, Heather Sachau, Michelle Kraemer, Cindy Chase, Denise Boyle, and Ann Maxey. Front row: Christy Philbrick, Dawn Diediker, Steph Chase, Steph Martinson, Michelle Isom, Penny Brentlinger, Shelly Smith, Bobbi Strivens, Bobbie Stingley and Stacey Jones.

## Allen spikers return four starters from last year

Talk about numbers, Allen volleyball head coach Gary Troth saw 29 girls show up for practice the first day of fall camp this year. "The numbers are up," Troth said. "We will definitely be able to field some competitive teams over here."

One of the luxuries that Troth will be able to use this year is the return of four starters off a team that went 14-7 a year ago. "We have plenty of experience on the team this season," Troth said. "And we are still young which of course makes the future look bright."

One problem in which Troth can not control that could have an ef-

fect during some of the games this year is the lack of height on this year's team. "I believe our tallest girl is 5-8," Troth said. "We will definitely be fundamentally sound but our Achilles heel will be our shortness in stature."

Troth noted that despite having the numbers in his favor this season that his squad must remain healthy in order to be successful. "We have 11 or 12 girls who will be fighting for playing time on the varsity level," Troth said. "But one thing we hope we will not have to overcome is injuries."

Cindy Chase and Denise Boyle

return for their junior seasons and both of these girls are among the best volleyball players in the Lewis & Clark Conference. Carla Stapleton will return to her familiar position of setter and Alyssa McGrath will also return to her starting rotation as the fourth starter back for Troth's troops.

Robin Schroeder will be looking to make an impact during this her final year as an Allen volleyball player as will Heidi Lund. Malinda Petit and Tami Malcom will also look to make an impact as will Christi Philbrick.

Troth noted that Emerson, Co-

leridge and Winside will be among the teams to beat.

Aug. 30-Sept. 1 — at Pender Tourney  
Sept. 6 — Coleridge  
Sept. 8 — at Stanton Tourney  
Sept. 11 — at Ponca  
Sept. 13 — Emerson  
Sept. 18 — at Beemer  
Sept. 20 — at Winnebago  
Sept. 24-25 — at Newcastle Tourney  
Sept. 27 — Walthill  
Oct. 2 — Bancroft at Rosalie  
Oct. 9 — at Newcastle  
Oct. 11 — at Winside  
Oct. 16 — Homer



MEMBERS OF THE Laurel Bears volleyball team include from back row left to right: Erika Gregg, Heidi Reinaehl, Amy Peters, Sherri Hangman, Kitty Schutte, Stacy Nixon, Courtney Thomas and Betsy Adkins. Middle row: Debbie Ward, Lisa Wattler, Bree Bebee, Jennifer Fritz, Tina Granquist, Angie Ernst, Tara Erwin, Donna Hangman. Front row: Kristy Stark, Karl Kraemer, Wendy Carstensen, Samantha Felber, Brandy Hintz, LeAnn Stewart, Stephanie Carson and Brandi Mathison.

## Inexperience and youth dominant in Laurel VB camp

Having a team loaded with senior oriented experience is what most high school coaches would like to see every year. Unfortunately, when these seniors graduate you are left with many holes to fill and that is what Laurel volleyball coach Carol Manganaro is looking at for the 1990 Bears squad.

Manganaro, who gets set to enter her eighth campaign at Laurel-Concord, will have to overcome the loss of Amy Adkins, Sherri McCorkindale, Shana Carstensen, Amy Newton, Julie Dickey, Emily McBride and Jesse Monson.

"We have just two seniors on this year's team," Manganaro said. "That's a far cry from the eight seniors we had last year." Bree Bebee and Jennifer Fritz will look to provide the much needed leadership for the Bears volleyball team.

Junior Sherri Hangman will return to provide some of the lost hitting power for Laurel as she is basically the only one who returns with experience. Tina Granquist played some last season and lettered as well as Fritz and Hangman.

Manganaro will have numbers to

use this season as 24 girls are out for the volleyball team. Manganaro will be assisted by Pam Thies. Laurel of course, participates in the Northeast Nebraska Athletic Conference, NENAC, which is traditionally very strong.

Bloomfield, Creighton, Crofton, Neligh, Pierce, Plainview and Randolph are conference foes while sub-district foes include Wakefield, Emerson-Hubbard and Ponca.

The good news for Laurel fans is that the Bears will host the conference meet and they will also

host the sub-district tournament in late October.

Aug. 30 — Randolph  
Sept. 4 — at Bloomfield  
Sept. 6 — Winside  
Sept. 11 — Crofton  
Sept. 13 — at Plainview  
Sept. 20 — at Emerson  
Sept. 27 — at Creighton  
Oct. 2 — Hartington  
Oct. 4 — at Wakefield  
Oct. 9 — at Pierce  
Oct. 16 — at Coleridge  
Oct. 18 — Neligh  
Oct. 22-23 — Conference at Laurel

# FALL SPORTS

The following businesses support WAYNE-CARROLL FOOTBALL

- Amber Inn Motel
- Stoltenberg Partners
- Northeast Nebraska Insurance Agency
- Terra International, Inc.
- Wayne Auto Parts
- Schumacher Funeral Home (Wayne, Carroll, Laurel, Winside)
- Wayne Care Centre
- Complete Computers
- Pamida Discount Center
- Logan Valley Implement, Inc.
- First National Bank
- Bill's GW
- Sav-Mor Pharmacy
- KTCH Radio
- The Wayne Herald-Marketer
- Wayne Vision Center
- State National Insurance
- Office Connection
- Jones Intercable
- Koplin Auto Supply
- The Diamond Center
- Johnson's Frozen Foods
- Restful Knights
- Clarkson Service
- Pac 'N' Save
- Hardee's
- Morris Machine Shop
- Fredrickson Oil Co.
- Doescher Appliance
- TWJ Feeds-Carroll
- Tom's Body Shop
- Peoples Natural Gas Co.
- Four In Hand
- First National Agency
- State National Bank & Trust (Member FDIC)
- Wayne Sporting Goods
- Carhart Lumber Co.
- Varsity
- 4th Jug
- Ellingson Motors
- Arnie's Ford Mercury

The following businesses support ALLEN FOOTBALL

- Security State Bank (FDIC)
- Tri County Insurance (Ken Linafelter, agent) (Phone 635-2403 or 287-2060)
- Village Inn
- Cash Store
- Logan LTD Feed Yard

The following businesses support LAUREL-CONCORD FOOTBALL

- State Farm Insurance (Annette Pritchard, agent)
- Laurel Veterinary Clinic (Dr. Walter Chace & Dr. Brian Schantz)
- Security National Bank (FDIC)
- Security National Insurance Agency
- Dr. Lee Dahl, DDS
- Laurel Lockers
- Gade's Food Center
- Circle H-Service
- North Side Grain
- Wierner's Trucking
- S & S Insurance Agency
- Urweiler Oil & Fertilizer
- McBride-Wiltse Mortuary (Wayne, Winside, Laurel)
- Steve's Repair (Concord, Nebr.) (Car & Truck Repair, Welding - All Types)
- Concord Cafe (Naomi Peterson/Fern Erickson)



MEMBERS OF THE Wayne football team this season include from back row left to right: Jason Ehrhardt, Rusty Hamer, Dan Wiseman, Chris Fredrickson, Matt Bruggeman, David Hewitt, Jesse Brodersen, Cory Wieseler, Cory Thomsen, Jerry Williams, Brian Lentz and Mike Zach. Middle row: Brad Uhling, Mark Niemann, Chris Hammer, Trevor Hall, Matt Metz, Jim Murphy, Brent Gamble, John Murphy, Jason Fink, Leon Brasch, Marten Lundsgard and Shane Guill. Front row: Aaron Walton, Robert Longe, Matt Rise, Jason Brandt, Gary Longe, Regg Carnes, Jack Swinney, Chad Paysen, Jason Williams, Bobby Barnes, and Brian Brasch.

## Wayne football team anxious for first game

As Wayne head football coach Lonnie Ehrhardt gets set to enter his eleventh season at the helm, he sees in front of him an abundance of talent which he hopes with a few breaks could carry them into the state playoffs for the first time in several years.

Ehrhardt will be assisted by Ron Carnes, Don Koenig, Duane Blumenkamp, Aaron Schuett and Brad Colter. Fifty two athletes will make up the Wayne team which is comparable to last season's roster.

"We feel real good about the returning letterwinners and starters that we have," Ehrhardt said. "Rusty Hamer will return to his halfback slot for his third straight year while Chris Fredrickson returns

to the fullback position which is where he played last year as well. At quarterback we will use returning starter Cory Wieseler so the entire backfield returns."

Ehrhardt also has a majority of his offensive line returning with Matt Bruggeman, Jason Ehrhardt and Dan Wiseman. Jesse Brodersen and Jason Fink along with tight end Jerry Williams will look to lead a balanced Wayne attack.

"We have a lot of quality seniors on the team this year," Ehrhardt said. "But we are also counting on the sophomores and juniors to really come through as well."

Ehrhardt is depending on his experienced team to provide the needed leadership and the know

how to win his team will need from week to week. Other impact players Wayne will be looking to for help is 6-4, 225 lb. lineman Mike Zach along with Shane Guill and Brian Lentz.

"Early in the season the big question mark will be depth," Ehrhardt said. "Finding guys to spell a starter for a series is what we are looking for right now."

Ehrhardt also notes that his team will not face an easy foe all season. "We don't have a weak team on the schedule," Ehrhardt said. "If we can get off on the right track we think we can meet our goals which include having a winning season, winning the conference title, making the state play-

offs and doing something at state once we make it."

Ehrhardt says that Schuyler, Pierce, Battle Creek and Cedar Catholic will be among the toughest teams his squad will face. Ehrhardt also said that the conditioning is good right now and the fall practices have gone real smooth without any major injuries.

- Aug. 31 — at Schuyler
- Sept. 7 — at Neligh-Oakdale
- Sept. 14 — Grand Island C.C.
- Sept. 21 — David City Aquinas
- Sept. 28 — West Point
- Oct. 5 — O'Neill
- Oct. 12 — Battle Creek
- Oct. 19 — at Hartington C.C.
- Oct. 24 — at Pierce
- Oct. 31 — Playoffs



MEMBERS OF THE Allen boys football team include from back row left to right: Nick Xenitopoulos, Steve Sullivan, Layne Anderson, Kevin Crogrove, Bren Mattes, Justin Kelly, Curtis Oswald, and Jay Jackson. Front row: Chris Sachau, Shane Fiscus, Pat Brentlinger, Craig Boyle, Shane Dahl, Paul Brentlinger, Barry Anderson and Bob Kumm.

## Nineteen boys to represent Allen in 1990

Nineteen boys will don the traditional colors of blue and gold for the Allen Eagle football team this year under third year head coach Mike Busselmann and Dave Uldrich.

Allen will be forced to replace players such as Kent Chase, Rusty Dickens and Matt Hingst as all three were lost to graduation last spring. Busselmann however, feels that this year's team will have more overall team speed than last year's.

"Although I have only been here three years this team is my fastest squad," Busselmann said. "As a team also this year's squad is the hardest working team that I've had. Their work ethic has been

very good and they worked hard all summer."

Shane Dahl will return as the quarterback for Busselmann's troops. Dahl has a lot of athletic ability and will be counted on not only for quarterback but from his outside linebacker position. Dahl will also be looked upon as the leader of the team.

While Dahl will be running the offense the defense appears to be in fine shape as well with Kevin Crogrove returning for his junior season. Crogrove has been one of Allen's most consistent players during the past two campaigns and he will be the leader on defense.

When Crogrove is not playing middle linebacker on defense he will be playing offensive guard. Paul Brentlinger will return to play in the fullback slot on offense and defensive end. Chris Sachau will hopefully be Allen's big play running back.

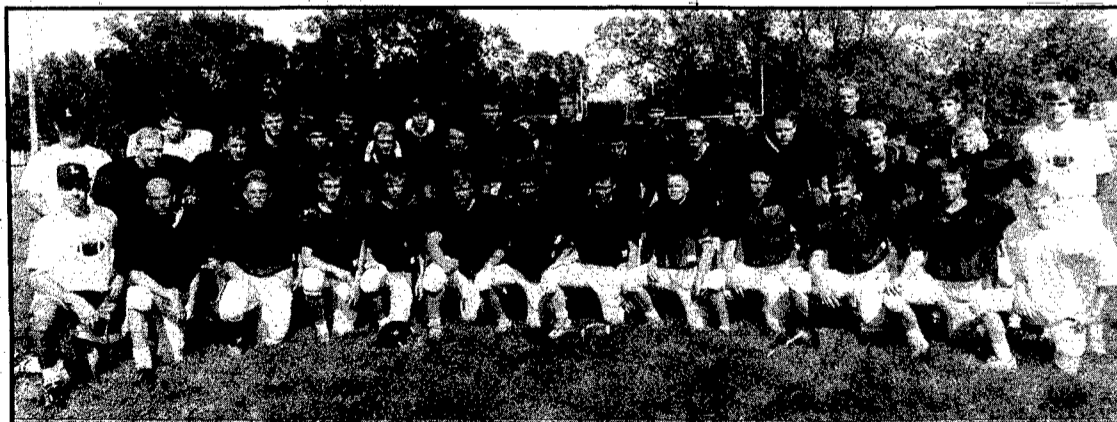
"I believe that Sachau is quicker than Kent Chase," Busselmann said. "He is only a junior so we are looking for good things from him." Barry Anderson is also looking good according to Busselmann at guard and outside linebacker.

Joedy Martinson will return to play end and Busselmann notes that two players will be up and coming

for the Eagles including Bren Mattes, a sophomore nose guard and center and Kurtis Oswald who has been clocked at 11.1 in the 100 meter dash as a freshman.

Busselmann sees Beemer and Coleridge as the team's to beat on his schedule.

- Aug. 31 — Winside
- Sept. 7 — at Beemer
- Sept. 14 — at Newcastle
- Sept. 21 — Bancroft-Rosalie
- Sept. 28 — Wynot
- Oct. 5 — at Walhill
- Oct. 12 — Winnebago
- Oct. 19 — at Wausa
- Oct. 24 — Coleridge



MEMBERS OF THE Laurel football team include from back row left to right: Andy Smith, Kelly Arens, Chris Hartung, Dustin Roberts, Matt Kessinger, Bruce Halsch, Jason Jones, Joel Lipp, Dean Heydon and Mark Stone. Middle row: coach Rick Nordhues, Greg Ward, John Haller, Jeremy Klausen, Jeremy Quist, Brian Lohse, Derik Ehler, Mark Dickey, Steve Stanley, Travis Monson, Travis Kraemer and Brian Penne and coach Dave Dannebring. Front row: Head coach Tom Luxford, Ben Donner, Jason Stapleman, Josh Erwin, Ben Dahl, Wade Winkelbauer, T.J. Nelson, Mark Lute, Kory Macklin, Pat Arens, Rusty Reifenrath, Kyle Schutte and Randy Quist.

## Laurel hopes to duplicate 1989 success

The Laurel football team will have to learn to adjust to life without the familiar faces of John Schutte, Troy Twohig and Todd Erwin this year as all three were lost to graduation last spring.

Laurel head football coach Tom Luxford still returns a lot of experience on both sides of the line including all-state potential guard Rusty Reifenrath. Bruce Halsch, Dean Heydon, Matt Kessinger, Brian Lohse, and John Heller will return to anchor the line while Brian Penne and Pat Arens will

head back to their familiar spots at flanker and fullback.

"We have a lot of experience returning on our line," Luxford said. "It's our skill positions that we have all the inexperience." Laurel will go with sophomore Travis Monson at quarterback who replaces the vacancy left by Todd Erwin.

Kelly Arens will move into the running back slot despite being just a sophomore. Arens will look to use his 6-1, 190 lb. frame to get the Bears into the endzone often this season.

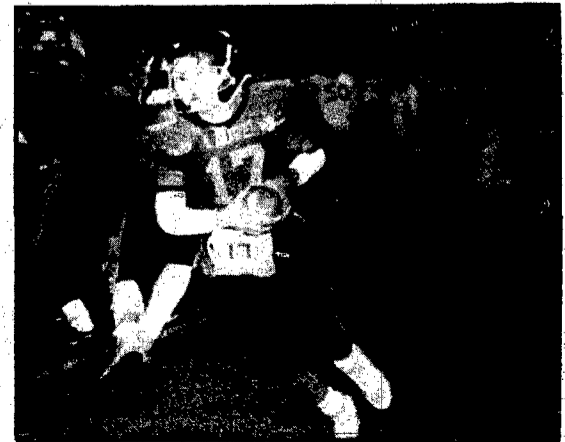
"One thing we have to depend on is staying healthy," Luxford said. "We cannot afford to have injuries when we have a lack of depth." Luxford said that the kids had a great fall camp and are ready for the season to begin which means an opening date in Randolph this Friday.

You may recall that Laurel was eliminated from the state play-offs a year ago by the same Randolph squad. "The kids have really worked hard over the summer," Luxford said. "We have a good

group of guys on the team who are really devoted and we hope it pays off for them."

Luxford notes that Pierce, Neligh, Bloomfield and Randolph will be the strongest teams the Bears will play.

- Aug. 31 — at Randolph
- Sept. 7 — Crofton
- Sept. 14 — at Ponca
- Sept. 21 — at Homer
- Sept. 28 — Pierce
- Oct. 5 — at Bloomfield
- Oct. 12 — at Neligh
- Oct. 19 — Plainview
- Oct. 24 — Creighton





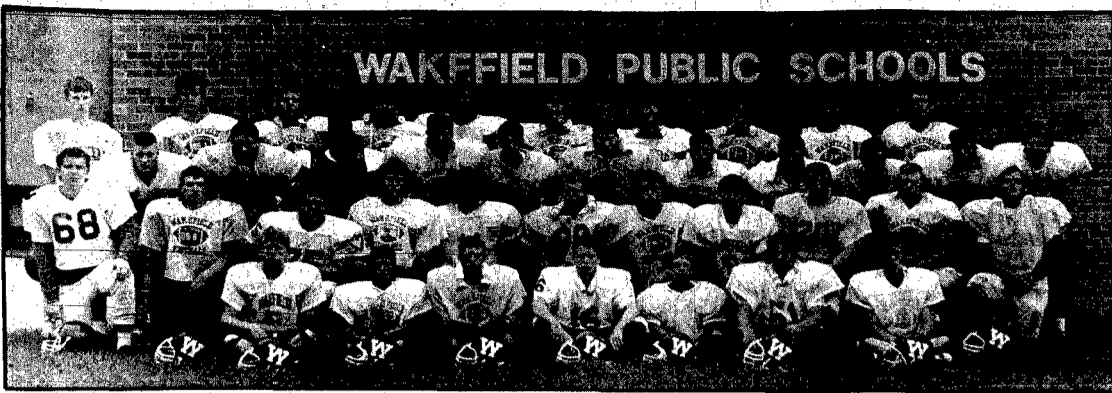
# FALL SPORTS

The following businesses support  
**WAKEFIELD FOOTBALL**

- Anderson Lumber Co.
- Benne's Package Liquor
- Bressler-Humlicek Funeral
- Dr. Paul V. Byers DDS
- Fair Store
- Wisner Farm Service  
(Box 148, Wakefield)
- First Edition Beauty Salon
- Kratke Oil
- Salmon Well Co.
- Wakefield Bowling, Inc.
- Wakefield National Bank
- Milton G. Waldbaum Co.
- Tooties Beauty Shop
- Nixon Auctioneers
- Dirty Harry's

The following businesses support  
**WINSIDE FOOTBALL**

- Winside Grain & Feed
- Winside Stop Inn
- Schumacher Funeral Home  
(Wayne, Carroll, Winside, Laurel)
- Lee & Rosie's
- Ray's Locker
- Oberle's Market
- Farmers Coop  
(Pilger & Winside)
- Winside Alfalfa Dehy, Inc.
- Country Ceramics
- Jacques Seed Co.
- Wacker's Farm Store
- Winside State Bank (FDIC)  
(Warnemunde Insurance & Real Estate)
- Winside Motor
- Winside Animal Clinic
- Wilva's Beauty Salon
- Schelle's Saloon
- Terry & Mike Thies Haymoving and Baling
- Hoskins Manufacturing Co.
- Commercial State Bank (FDIC)  
(Hoskins)
- Apache Manufacturing  
(Hoskins)
- Pat's Beauty Salon  
(Hoskins)
- Dad's Place  
(Hoskins)
- Ron's Service  
(Hoskins)
- Big Ern's  
(Hoskins)



MEMBERS OF THE Wakefield football team for 1989 includes from back row left to right: Jason Boeck, John Schopke, Cory Blattert, Matt Bartling, Keith Wenstrand, Kyle Torczon, Doug Stanton, Rod Greve, Mark Demke and Joe Kucera. Third row: Dalton Rhodes, Matt Stanton, Marcus Tappe, Anthony Brown, Thad Nixon, Jon Johnson, Matt Anderson, Aron Uecht, Brandon Benson, and Brent Oetken. Second row: Jason Fendrick, Jason Lately, Kelly Turney, Pat Jepsen, Mike Anderson, T.J. Preston, Brad Nuernberger, Larry Hangman, Ben Dutton, Scott Johnson, Scott Mattes. Front row: Ryan Ekberg, Scott Fiedler, Miah Johnson, Cody Skinner, Brian Johnson, Dave Jensen and Craig Anderson. Not pictured is Vahn Thomsen, Todd Green, Todd Mattson and Jim Benson.

## Wakefield football team to rely on backfield

The Wakefield football team will enter its second year among the eleven man ranks and hopefully with the one year under their belt, head coach Dennis Wilbur hopes his team can get off to the kind of start his squad needs to enjoy a successful season.

"Last year was our first year in eleven-man football," Wilbur said. "We came out flat our first couple of games and we lost some games that we shouldn't of just because we were still trying to place people in the lineup where we best thought they would fit."

Wilbur's squad will have to over-

come the decimation left by graduation as most of the defense fell victim too. "Defensively we lost a lot," Wilbur said. "Offensively we lost some players as well but we feel we have more experience returning in the backfield than what we had last season in Anthony Brown at running back and Thad Nixon, Matt Bartling and Larry Johnson at fullback."

Kyle Torczon, Anthony Brown and Cory Blattert will be the only three returning starters on defense for the Trojans while Torczon, Blattert and Doug Stanton along with the backfield will return on offense.

Marcus Tappe will step into the quarterback slot to fill the vacancy left by his brother Matt. Rod Greve and Scott Johnson will also look to fill the vacancies on the line. John Schopke played most of last season but still must overcome injuries he suffered in a car accident last year.

Mark Dempke, Jon Johnson and Brent Oetken will look to add fuel to Wakefield's passing game this season from their wide out spots. "We have to be more versatile this season," Wilbur said. "With some consistency and a little luck and if we are to win the games that we

should, we could have a successful year."

Wilbur noted that his squad will have to face four playoff teams from a year ago in Norfolk Catholic, Battle Creek, Bloomfield and Emerson.

- Aug. 31 — Elkhorn Valley
- Sept. 7 — Battle Creek
- Sept. 14 — at Plainview
- Sept. 21 — at Norfolk Catholic
- Sept. 28 — Homer
- Oct. 5 — Ponca
- Oct. 12 — at Bloomfield
- Oct. 19 — at Emerson-Hubbard
- Oct. 24 — Stanton



MEMBERS OF THE Winside football team for 1990 include from back row left to right: Coach Blair Kallin, head coach Randy Geier, Jason Krueger, Cam Shelton, Trevor Topp, Mark Brugger, Brian Thompson, Doug Heinemann, Jeff Gallop, Kerry Jaeger, coach. Front row: Matt Behmer, Marc Stueckrath, Jason Topp, Jason Bargstadt, Kyle Frederick, John Hancock, Marty Jorgensen, Shane Frahm, Cory Jensen, and Brady Frahm.

## Winside gridders are cautiously optimistic

Winside head football coach Randy Geier is cautiously optimistic about his team's chances of success this year in the eight man ranks of Class D-1. Nineteen athletes will don the Wildcat colors for the season but one familiar face that will not be seen this season is Max Kant who was lost to graduation.

"There's no real way to replace a Max Kant," Geier said. "He was a great player but no we have to see how we respond to a season without him." One thing Geier does not have to worry about is

inexperience. Winside has seven of eight starters returning on both offense and defense.

The Wildcat line will be as big as any in the Class D ranks and perhaps as big as any in Northeast Nebraska with Brian Thompson, Trevor Topp, Mark Brugger, Jason Bargstadt and Jeff Gallop strapped across the line.

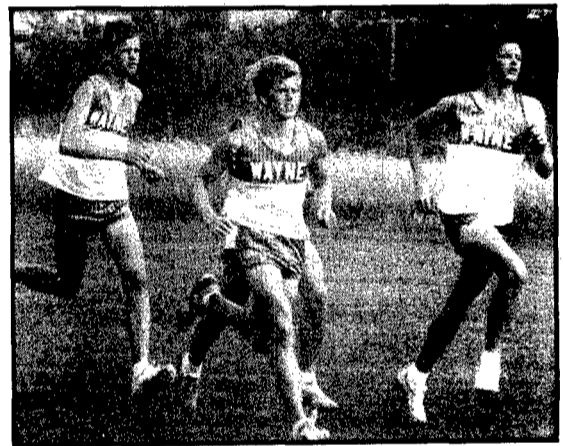
Cory Jensen will return for his junior season at the quarterback slot while Shane Frahm will take up the running vacancy left by Kant. Doug Heinemann will return for his final season as an end for Geier's Cats.

"We're right where we should be at this time," Geier said. "The guys are anxious to get that first game under their belt." Winside will open up 1990 play in Allen against Mike Busselmann's Eagles.

"We are hoping that our experience will allow us to mature a lot this season compared to last season," Geier said. "One thing that we will have a tough time overcoming is our difficult schedule. We play four play off teams from a year ago in Beemer, Coleridge, Newcastle and Wynot," Geier added.

Geier added that the work ethic his team has demonstrated in pre-season has been good. John Hancock and Jason Krueger will hold down the full back slot for the Wildcats and Geier said that sophomore Marc Stuckrath has been showing potential.

- Aug. 31 — at Allen
- Sept. 7 — Hartington
- Sept. 14 — at Coleridge
- Sept. 21 — Osmond
- Sept. 28 — at Walthill
- Oct. 5 — Wausa
- Oct. 12 — at Beemer
- Oct. 19 — Wynot
- Oct. 24 — at Newcastle



The following businesses support  
**WAYNE-CARROLL CROSS COUNTRY**

- Arnie's Ford Mercury
- Amber Inn Motel
- Terra International Inc.
- Wayne Auto Parts
- Schumacher Funeral Home  
(Wayne, Carroll, Laurel, Winside)
- Ellingson Motors
- Wayne Care Centre
- Complete Computers
- Pamida Discount Center
- Logan Valley Implement
- First National Bank
- Bill's GW
- Sav-Mor Pharmacy
- KTCH Radio
- 4th Jug
- The Wayne Herald-Marketer
- Wayne Vision Center
- State National Insurance
- Office Connection
- Jones Intercable
- Hillier Chiropractic Clinic
- Koplin Auto Supply
- The Diamond Center
- Johnson's Frozen Foods
- Restful Knights
- Clarkson Service
- Pac 'N' Save
- Hardee's
- Morris Machine Shop
- Fredrickson Oil Co.
- Doescher Appliance
- TWJ Feeds-Carroll
- Tom's Body Shop
- Peoples Natural Gas Co.
- Four In Hand
- First National Agency
- State National Bank & Trust  
(Member FDIC)
- Wayne Sporting Goods



MEMBERS OF THE Wayne cross country team this fall include from back left to right: Head coach Rocky Ruhl, Matt Ley, Mark Meyer, Randy Johnson, Aaron Wilson, Martin Rump, Jason Johs, Todd Fuelberth and Aaron Geiger. Front row: Megan Cornish, Susan Ensz, Carrie Junck, Tami Schluns, Emily Wisler, Jessica Wilson, Sherl Wortman and Tammy Geiger.

## 22 runners aim to help x-country team

Each year that head cross country coach Rocky Ruhl has been at Wayne high, the numbers out for cross country have increased. As Ruhl gets set to enter his fourth year at the helm he looks at 12 boys and 10 girls on the team which have their sights set on an October meeting in Kearney for the annual state tournament.

"Looking at the experience level we have coming back off of last year's boys state qualifying team and of course the quality of runners we have on our girls team, we are very optimistic," Ruhl said.

The leading boys returnee is Todd Fuelberth who will enter his junior year seeking his third consecutive trip to the state cross

country meet. Steve Dinsmore, Aaron Wilson and Mike DeNaeyer look to add to the strength of the boys team as does Jason Johs.

Of course when you think of the girls cross country team you think of junior sensation Tammy Geiger who placed seventh at the state meet a year ago as a sophomore. Geiger will also be looking to qualify for the state meet for the third straight year.

Amy Wriedt also returns for her senior year and she will be looking to improve on her 11th place finish at the district meet which just missed qualifying for the state meet.

Sherl Wortman returns to add

experience to the girls team and the cross country girls team got an additional lift from Susie Ensz, who bypassed her sophomore year on the volleyball team for cross country.

"If the runners keep working as hard as they have been during the off season we could be one of the best teams in Northeast Nebraska," Ruhl said. "As always Crofton will be strong this year but they are Class C. Another strong team we will face is O'Neill's girls team," Ruhl added.

Wayne will be looking to defend its boys crown in the conference meet and the district meet. "We are aiming to improve every meet

as well as place in the top two of each invitational we go too," Ruhl said. "We have pointed to the David City Aquinas Invitational as the preview to the state meet because there are 19 or 20 teams that will run."

- Sept. 1 — at Wisner-Pilger Invite
- Sept. 4 — South Sioux City
- Sept. 7 — at Norfolk Catholic Invite
- Sept. 11 — Wisner-Pilger
- Sept. 14 — at O'Neill Invite
- Sept. 21 — at Crofton Invite
- Sept. 27 — at David City Aquinas Invite
- Oct. 2 — Norfolk
- Oct. 5 — Conference
- Oct. 11 — Districts
- Oct. 19 — State

## Laurel Methodist Church marks 100th with special worship service, program

The Laurel United Methodist Church celebrated its 100th anniversary on Aug. 26. The Rev. Ron Mursick is pastor of the church.

Former pastors spoke at the morning worship service and included the Rev. James Mote of Wilcox and the Rev. Richard Burgess of Ogallala. Also present was the Rev. Leonard Hartwig.

The theme hymn for the celebration was "Life High the Cross," with Tim Boeckenhauer on trombone and Chad Anderson on trumpet.

The adult choir director was Mrs. Ellen Erwin. Several numbers were sung by the Laurel church choir and visiting choir members from the Logan Center United Methodist Church at Dixon and from Olathe, Kan.; Haxton, Colo.; Murdock, Omaha and Wayne.

The children's Joy Choir, directed by Mrs. Star Smith, also sang two selections.

A DINNER for 250 persons was served in the Laurel city auditorium with Mrs. Doris Lipp as chairman, assisted by Mrs. LaVonne Madsen and Mrs. Ardis Cunningham. The dinner was served by members of the Logan Center United Methodist Church.

A commemoration service followed at 2:30 p.m. Providing the prelude and special music were Anita Zierott of Murdock and Sharlene Coulter of Blair, daughters of Mr. and Mrs. Harold Ward of Laurel.

Recognitions were given by Jim Erwin and included all members of the centennial committees. Gen-

eral chairman was Mrs. Mary Ann Urwiler, with Mrs. Marge Ward as co-chairman, assisted by Dave Anderson and Pastor Mursick.

Presentation of pins to 50 and 75-year members of the Methodist Church were made by Mrs. Zelma Juhlin.

Receiving a 75-year pin was Mrs. Lillian Spike. Recipients of 50-year pins included Mrs. Ruby Smith, Mrs. Agnes Burns, Mrs. Edna Christensen, Jim and Phyllis Campbell, Mrs. Natalie Wacker, Mrs. Shirley Wickett, Mrs. Rosie Samuelson, Mrs. Florence Tuttle, Harley Urwiler, Elmer Hattig and Walter Chace Jr.

Guest speaker was the Rev. Ron Roemmich, Northeast District Superintendent of the United Methodist Church.

A silver tea and open house

were held following the service with Mrs. Joyce Karnes as chairman.

ON SATURDAY evening, Aug. 25, a covered dish dinner was held at the church for former pastors and friends of the church who had come to Laurel in preparation for the centennial. Hosts were members of the Maranatha Group.

Master of ceremonies for the program was Vern McNabb. Mrs. Thelma Hattig played several old favorites on the piano and Dick O'Gara of Omaha sang "My God of Love."

A humorous reading was given by Lavonna Bowman. Group singing was led by Roy Stohler, accompanied by Jim Campbell. Shirlene Boeckenhauer sang a special number.



Holly Nichols

### Nichols awarded scholarship to Wayne State

WAYNE - Holly Nichols, Wayne, has been awarded the \$500 Fletcher Farm Service Scholarship to attend Wayne State College in the fall.

Nichols, a 1990 graduate of Wayne-Carroll High School, is the daughter of Glen and Sandra Nichols. She intends to major in business at Wayne State.

### Pennington accepts post with UN-L

WAYNE - Pastor James Pennington, minister at Grace Lutheran Church in Wayne for the past six years, has received a call as the campus minister at the University of Nebraska-Lincoln. Pennington will be leaving his Wayne call Monday, Sept. 3.

In honor of his service to the church, a pot-luck dinner is planned Sunday, Sept. 2 at Grace Lutheran Church, 904 N. Logan, following the service. The public is invited to attend. Those attending are asked to bring a hot dish and a salad or dessert.

During his six years in Wayne, Pennington has been actively involved in the Wayne State College campus ministry.

Serving as interim pastor will be associate pastor Jeff Anderson.

### Correction

An error appeared in the Monday, Aug. 27 edition of The Wayne Herald. According to Mrs. Sanitation owner Frank Mrsny, he has always favored alley pick-up and he has been opposed to curb-side pick up, contrary to an article focusing on the cost of solid waste to the city.

### Move Over Mrs. Markham

## Auditions scheduled for next theater production

WAYNE - Move Over, Wayne as Mrs. Markham is coming to town, according to director Gil Haase in preparation for auditions of the upcoming Wayne Community Theaters next production.

"Move Over Mrs. Markham" by Ray Cooney and John Chapman will be presented in dinner theatre format at the Black Knight, Oct. 25-27 and Nov. 1-2. Due to limited seating it will be necessary to provide the public with five performances and a reservation only ticket.

Auditions for the 9-member cast will be on Sept. 4 & 5 at 7:30 p.m. at the Wayne Care Centre. "This production is one of the funniest shows I've ever been associated with," Haase says. "I directed it in Columbus six years ago and if done right, the audience will leave the theatre holding their sides from laughter."

"Markham" is a very fast-paced British bedroom farce. Philip

Markham and Henry Lodge are children book publishers with a very loyal following and their wives (Joanna Markham and Linda Lodge) are very close friends. The Markhams live above the office, have a maid (au pair) Sylvie Hauser and an interior decorator Alistair Spenlow, of questionable background, who is redoing the apartment. Along comes the author of the "Woof-Woof" books, Olive Harriet Smythe and Mr. & Mrs. Lodges "dates" (Walter Pang-

bourne & Felicity Jane Wilkinson) and along with mistaken identities and double entendres, turn the household into absolute bedlam.

According to Haase, ages should range from 25 to 50 and with the British humour and situations that develop, a dialect of some sort will almost be imperative. That, however, shouldn't scare any would-be actor off, that will come automatically. What's important is the auditions at 7:30 p.m., Sept. 4 & 5 at the Care Centre.

## Wayne County Court

**Real estate**  
Aug. 24 — Town and Country Builders, Inc. to Charles Earle Robbins, II, lot 6, block 1, Muhs Acres addition to Wayne. D.S. \$100.50.

Aug. 24 — Charles Earle Robbins, II and Teresa L. Robbins to Mark A. and Andrea S. Klassen, lot 6, block 1, Muhs Acres addition to Wayne. D.S. \$112.50.

**Traffic fines**  
Timothy J. Gilliland, Wakefield, speeding, \$30; Raymond E.

Weyhrich, Randolph, speeding, \$30; Daniel K. Frevert, Wayne, speeding, \$30; Judith J. Morgan, South Sioux City, speeding, \$30; Chad P. Young, Wayne, speeding, \$15; Alan W. Siemering, Omaha, speeding, \$30; Gary E. Sain, Lincoln, illegal U-turn, \$15; Jennifer L. Kerns, Wayne, speeding, \$30; Glenna Smith, Westminster, Colo., speeding, \$30; Mary L. Andersen, Stanton, speeding, \$15; Mark A. Long, Newman Grove, speeding, \$30.

**Criminal filings**  
State of Nebraska, City of Wayne, plaintiffs, against Bruce J. Eason, disorderly conduct.

State of Nebraska, City of Wayne, plaintiffs, against Michael D. Ellis, driving while under the influence of alcohol.

State of Nebraska, plaintiff, against Shane R. Milligan, (count I) driving while under the influence of alcohol; (count II) refusal to submit to chemical test for alcohol content.

## Chalk art class sponsored by local church

WAYNE - A chalk art class will be offered Sept. 8 at 10 a.m. at the Wayne World Outreach Center.

The class will be taught by Dixie Anson of Omaha. Participants must register by Wednesday, Sept. 5.

To register for the class call Sue Schoenherr at 375-3103. Sample chalk art can be viewed in the window next to Kids' Closet.

## Church Services

### Wayne

**EVANGELICAL FREE**  
1 mile east of Country Club (David Dickinson, pastor)  
Sunday: Sunday school, 9:30 a.m.; worship, 11; adult training, 6 p.m.

**FIRST BAPTIST**  
(Gordon Granberg, pastor)  
Sunday: Sunday school, 9:30 a.m.; coffee and fellowship, 10:30 to 10:45; worship, 10:45. Wednesday: Midweek service, 7:30 p.m.

**FIRST TRINITY LUTHERAN**  
Altona  
Missouri Synod  
(Ricky Bertels, pastor)  
Sunday: Sunday school, all ages, 9:15 a.m.; worship with communion, 10:30.

**FIRST UNITED METHODIST**  
(Keith W. Johnson, pastor)  
Thursday: Sunday school teachers meeting, 7 p.m. Sunday: Worship, 9:30 a.m.; coffee and fellowship, 10:30. Tuesday: Love in Action, 6 p.m.; council on ministries, 7:30. Wednesday: Personal Growth, 9 a.m.; youth choir, 4

(Neil Helmes, pastor)  
Sunday: Sunday school, 10 a.m.; worship, 11; evening worship, 6:30 p.m. Wednesday: Choir practice, 7 p.m.; Bible study, 7:30. For free bus transportation call 375-3413 or 375-4358.

**JEHOVAH'S WITNESSES**  
Kingdom Hall  
616 Grainland Rd.  
Friday: Congregational book study, 7:30 p.m. Sunday: Bible educational talk, 9:30 a.m.; Watchtower study, 10:20. Tuesday: Theocratic school, 7:30 p.m.; service meeting, 8:20. For more information call 375-2396.

**REDEEMER LUTHERAN**  
(Franklin E. Rothfuss, pastor)  
Thursday: Altar Guild, 7 p.m.; ushers meeting, 7:30; assisting ministers meeting, 8. Sunday: Worship with communion, 8:30 and 11 a.m. Monday: Office closed. Tuesday: Bible study, 6:45 a.m.; Wayne Care Centre communion, 3:30 p.m. Wednesday: Fourth, sixth and eighth grade catechisms, 6:30 p.m.; choir, 7.

**ST. ANSELM'S EPISCOPAL**  
1006 Main St.  
(James M. Barnett, pastor)  
Sunday: Services, 10 a.m., except second Sunday of each month at 7:30 a.m.

**ST. MARY'S CATHOLIC**  
(Donald Cleary, pastor)  
Saturday: Mass, 6 p.m. Sunday: Mass, 8 and 10 a.m.

**ST. PAUL'S LUTHERAN**  
(Wallace Wolff, interim)  
Sunday: Worship, 9 a.m. Monday: Office closed. Tuesday: Worship and music committee, 7:30 p.m.; CROP recruiters, 8. Wednesday: Mental Health Clinic, 1 to 5 p.m.; property committee, 7:30; Christian education committee and Sunday school teachers, 7:30.

**WAYNE PRESBYTERIAN**  
(Dr. John G. Mitchell, pastor)  
Sunday: Worship, 9:45 a.m.; coffee and fellowship, 10:35. Monday: Office closed in observance of Labor Day. Wednesday: Presbyterian Women's potluck luncheon, 1 p.m.

**WAYNE WORLD OUTREACH CENTER**  
Assembly of God  
901 Circle Dr.  
(Bob Schoenherr, pastor)  
Sunday: Worship, 10 a.m.; prayer meeting, 6 p.m. Wednesday: Adult and children's Bible teaching, 7 p.m. For more information phone 375-3430.

### Allen

**FIRST LUTHERAN**  
(Duane Marburger, pastor)  
Sunday: Worship with communion, 9 a.m. Sunday school will resume on Sept. 9. Tuesday: Guest Day at Friends Church, 2 p.m. Wednesday: Council meeting, 8 p.m.

**SPRINGBANK FRIENDS**  
(Roger Green, pastor)  
Sunday: Sunday school, 9:30 a.m.; worship, 10:30; evening praise fellowship (Mike Rogers guest speaker), 7 p.m. Tuesday: Friends Women guest day at the church, 2 p.m. (Note change in meeting date). Wednesday: Adult Bible study, 7:30 p.m.

**UNITED METHODIST**  
(T. J. Fraser, pastor)  
Sunday: Worship, 10:30 a.m. (Note change in worship time for the next four months); Sunday school will resume on Sept. 9. Tuesday: Bible study, church office, 9:30 a.m.; Friends Women guest day, 2 p.m. Wednesday: Administrative council, 8 p.m., followed with meeting of centennial committees.

### Carroll

**ST. PAUL'S LUTHERAN**  
(Christopher Roepke, pastor)  
Sunday: Worship, 11:30 a.m.

**UNITED METHODIST**  
(Keith Johnson, pastor)  
Sunday: Worship, 11 a.m.

**UNITED PRESBYTERIAN-CONGREGATIONAL**  
(Gail Axen, pastor)  
Sunday: Combined worship service at the Congregational church, 10 a.m.

**SCHUMACHER FUNERAL HOMES**  
WAYNE  
CARROLL  
WINSIDE  
LAUREL  
375-3100  
Steve & Donna Schumacher

### Concord

**CONCORDIA LUTHERAN**  
(Duane Marburger, pastor)  
Thursday: Film, "Molder of Dreams," sponsored by the Area Ministerial Association at the United Methodist Church in Laurel,

8 p.m. Sunday: Rally Sunday school and Bible class, 9:30 a.m.; worship with communion, 10:45.

**ST. PAUL'S LUTHERAN**  
(Richard Carner, pastor)  
Sunday: Worship, 8:30 a.m.

**EVANGELICAL FREE**  
(Bob Brenner, pastor)  
Thursday: Film, "Molder of Dreams," sponsored by the Area Ministerial Association at the United Methodist Church in Laurel, 8 p.m. Friday: Church board, 8 p.m. Saturday: Family camp, Belden Camp Assurance, 10:30 a.m. Sunday: Sunday school, 9:30 a.m.; worship, 10:30; final service at Belden Camp (Steve Kries speaker), 2:15 p.m.; Layne Johnson at Evangelical Free Church for testimony and music, 7:30. Tuesday: White Cross, 9:30 a.m.; combined FCWM meeting at church, 7:30 p.m. Wednesday: Quarterly business meeting, 8 p.m.

### Dixon

**LOGAN CENTER UNITED METHODIST**  
(Ron Mursick, pastor)  
Sunday: Worship, 9 a.m.; Sunday school, 10; evening service, 7 p.m.

**DIXON UNITED METHODIST**  
(T. J. Fraser, pastor)  
Sunday: Worship, 9 a.m.; Sunday school, 10. (Note change in time).

**DIXON ST. ANNE'S CATHOLIC**  
(Michael W. Grewe, pastor)  
Sunday: Mass, 10 a.m.

### Hoskins

**PEACE UNITED CHURCH OF CHRIST**  
(Dr. Richard Brown, interim)  
Sunday: Worship with communion, 9:30 a.m.

**TRINITY EVANGELICAL LUTHERAN**  
(James Nelson, pastor)  
Sunday: Worship, 10 a.m.

**ZION LUTHERAN**  
(Gerald Schwanke, pastor)  
Sunday: Worship with communion, 8:30 a.m.; Sunday school, 9:30. Tuesday: Bible class, 8 p.m. Wednesday: Dual parish women's Bible class, 10 a.m.

**WORD OF LIFE MINISTRIES**  
Thursday: Bible study, 10 a.m. Sunday: Sunday school, 10 a.m.; service, 10:30. Wednesday: Teen group (371-6583), 7 p.m.; prayer service, 7.

### Leslie

**ST. PAUL'S LUTHERAN**  
(Ricky Bertels, pastor)  
Sunday: Worship with communion, 9 a.m.; Sunday school, 10.

### Wakefield

**CHRISTIAN**  
(Tim Gilliland, pastor)  
Sunday: Sunday school, 9:30 a.m.; worship, 10:30. Wednesday: Home Bible studies, 7 p.m.

**EVANGELICAL COVENANT**  
(Charles D. Wahlstrom, pastor)  
Thursday: Service at Gospel Mission, 8 p.m. Sunday: Worship at Wakefield Health Care Center, 8:15 a.m.; Sunday school rally, 9:30; worship, 10:45.

**IMMANUEL LUTHERAN**  
(Richard Carner, pastor)  
Sunday: Sunday school, 9 a.m.; worship, 10; The Lutheran Hour, broadcast KTCH, 12:30 p.m.

**PRESBYTERIAN**  
(Jesse and Arlene Patrick, pastors)  
Sunday: Worship, 11 a.m.; parish service at Emerson, 7:30 p.m.

**ST. JOHN'S LUTHERAN**  
(Bruce Schut, pastor)  
Sunday: LLL State Fair worship; Sunday school and Bible class, 9:15

a.m.; worship, 10:30; young adults, 7 p.m. Tuesday: Circuit pastors in Wayne, 9:30 a.m.; LLL, 8 p.m. Wednesday: Teacher meeting/weekday preview, 7:30 p.m.

**SALEM LUTHERAN**  
(Kip Tyler, pastor)  
Sunday: Church school, 9 a.m.; worship, 10:30. Tuesday: XYZ dinner, noon; Bible study leaders, 7 p.m.

### Winside

**ST. PAUL'S LUTHERAN**  
(Jeffrey Lee, pastor)  
Thursday: Early risers Bible study, 6:30 a.m.; pastor's office hours, 9 to 11:30; midweek teachers, 7:30 p.m. Friday: Pastor's office hours, 9 to 11:30 a.m. Sunday: Early worship, 8 a.m.; Sunday school and Bible classes, 9:10; late worship, 10:30. Tuesday: Pastor's office hours, 9 to 11:30 a.m. Wednesday: Pastor's office hours, 9 to 11:30 a.m.; Ladies Aid, 1:30 p.m.; midweek (third through eighth grades), 7.

**TRINITY LUTHERAN**  
(Peter and Marsha Jark-Swain, pastors)  
Sunday: Worship with communion, 10:30 a.m.

**UNITED METHODIST**  
(Marvin Coffey, pastor)  
Sunday: Worship with communion, 11:05 a.m. Tuesday: Church council, 7:30 p.m.

**McBRIDE WILTSE MORTUARY**  
WAYNE LAUREL WINSIDE  
Brian J. McBride

p.m.; chancel choir, 5; Wesley Club, 5; trustees, 8; personnel and nominations, 8.

**GRACE LUTHERAN Missouri Synod**  
(James Pennington, pastor) (Jeffrey Anderson, associate pastor)

Saturday: Bible study, Popo's, 6:30 a.m. Sunday: The Lutheran Hour, broadcast KTCH, 7:30 a.m.; Sunday school and Bible classes, 9; worship, 10; Christian Student Fellowship, 9:30 p.m. Monday: Worship, 6:45 p.m. Tuesday: Pastor's conference, Grace, 9:30 a.m.; Sunday school staff meeting, 7 p.m.; Region IV Bible study, 7; Christian Student Fellowship, 9:30. Wednesday: Men's Bible breakfast, Popo's, 6:30 a.m.; senior choir, 8 p.m.; Christian Student Fellowship, 9:30.

**INDEPENDENT FAITH BAPTIST**  
208 E. Fourth St.

Someone at some future date will be responsible for making our funeral arrangements and paying for them. These decisions will need to be made by someone close to us..... Perhaps alone..... Unprepared..... with other things on their minds..... We at Schumacher Funeral Home can help you with our "Family Care Plan" to ease the burden on your family.

**SCHUMACHER FUNERAL HOME**  
WAYNE - LAUREL - WINSIDE - CARROLL  
375-3100



IDS FINANCIAL SERVICES has been a leader in helping clients meet their financial planning needs since 1894 and is located at 416 Main St. in Wayne.

GEORGE AND JENNIFER PHELPS work on one of the many Personal Financial Plans generated each year.

## IDS Financial Services

Helping Wayne area residents reach their financial goals



SECRETARY DIANE HEESE assists with financial planning at the computer.

IDS Financial Services has a long history of helping clients manage their money. Since 1894, IDS has been a leader in finding new ways to help clients meet their financial planning needs.

In addition to its base of mutual funds, life and health insurance, and brokerage services, IDS today also offers a full range of banking services, along with student loans, tax sheltered annuities (available to teachers and other employees of non-profit institutions), federally insured certificates and fee based financial plans.

Having a comprehensive line of all types of financial services allows IDS to take a unique approach toward helping clients achieve their financial goals.

IDS helps clients follow a financial planning process that answers questions about how much money a family needs to save in order to educate their children, buy a home or retire early, or how much life insurance the family really needs.

ACCORDING TO George Phelps, a Certified Financial Planner with IDS, "Before we ever suggest a particular financial product, we first sit down with the client to establish what his or her goals are. Then we can suggest the right investments to meet those needs."

George Phelps has been assisting people in Northeast Nebraska develop financial

plans and meet financial goals since 1968.

In addition to earning a master's degree from Iowa State University, Phelps also graduated from the College for Financial Planning in 1979.

The designation of Certified Financial Planning requires a minimum of 60 hours of continuing education every two years. As a result, Phelps believes he can provide his IDS clients with current and comprehensive financial advice.

PHELPS SAID every family faces three major roadblocks to achieving their financial goals.

First, inflation causes every financial goal to cost a little more each year and therefore is

a little harder to achieve.

Second, taxes reduce the amount of money an individual can save. Phelps said many people pay more taxes than are really necessary, especially over a lifetime. Financial planning at IDS includes planning for taxes over a lifetime, thus many times reducing the overall amount paid.

Finally, Phelps said there is a virtual supermarket of financial services on the market today.

"These factors mean that saving money for future goals is a lot more than just tucking a few dollars away. We can help people sort out the confusion and follow a successful savings strategy based on their own goals," Phelps explained.

**HOLLYWOOD VIDEO**

NEW MOVIES — "JOE VS THE VOLCANO"  
"HARD TO KILL" "BORN ON THE 4TH OF JULY"  
COMING SOON —  
"ALL DOGS GO TO HEAVEN" — "DISNEY'S PETER PAN"  
"TEENAGE MUTANT NINJA TURTLES - THE MOVIE"  
CAMCORDER SPECIALS 6:1 & 8:1 ZOOMS

**TWIN I Stereo**

**YOUNG GUNS II**  
The most wanted men are back!

**TWIN II Wayne, NE**

**STEVE MARTIN RICK MORANIS**  
**MY BLUE HEAVEN**

NIGHTLY AT 7:15PM FRI., SAT., SUN., & TUE. AT 9:15PM SUNDAY MATINEE 2:15 BARGAIN TUESDAY!

NIGHTLY AT 7:00 PM FRI., SAT., SUN., & TUE. AT 9:00 PM SUN. MATINEE AT 2PM BARGAIN TUESDAY!

On all new presentations — New sharp picture and clear stereo sound! Offering great entertainment at Low Prices!!

**24 HOUR FUELING WITH THE NEW FUEL-LOCK SYSTEM**

FuelLock

AVAILABLE 24 HOURS A DAY  
STOP IN & PICK UP YOUR APPLICATION SOON!

**ZACH OIL CO.**  
310 SOUTH MAIN WAYNE  
TELEPHONE: 375-2121

Coastal The Energy People

**FOOTBALL ACTION RETURNS TO**

**KTCH** 1590 AM 105 FM

**FOLLOW WAYNE HIGH SCHOOL, WAYNE STATE AND NEBRASKA BIG RED TEAMS ALL SEASON.**

**AUGUST 31 - WAYNE HIGH AT SCHUYLER**  
**SEPT. 1 - 1:00 PM WAYNE STATE AT UNO 5:30 PM BAYLOR AT NEBRASKA**

**KTCH, YOUR SPORTS STATION FOR ALL SEASONS!**

**NOW PERM CARE IS SIMPLE WITH MATRIX PERM FRESH!**

Revive and maintain the springiness in your permed hair with Matrix Perm Fresh Leave-In Curl Retention Aid. Perm Fresh not only puts incredible bounce back in curls, it leaves hair healthy, shiny and silky feeling.

For the freshest perm looks, ask one of our stylists about Matrix perms and Perm Fresh today!

**Matrix HAIR & SKIN CARE**

**THE HAIR STUDIO**

203 EAST 10TH STREET WAYNE, NE. 375-1900

Brighten someone's day with a **GIFT SUBSCRIPTION to THE WAYNE HERALD**

100 ISSUES X 23¢ EACH = ONLY \$23.00

RATES: in Wayne, Pierce, Cedar, Dixon, Thurston, Cum- ing, Stanton and Madison Counties; \$23.00 per year, \$20.00 for six months. In-state: \$25.50 per year, \$22.00 for six months. Out-state: \$30.50 per year, \$27.00 for six months. Single copies 45 cents.

My check is enclosed for \_\_\_\_\_  
Send subscription to  
Name \_\_\_\_\_  
Address \_\_\_\_\_  
This is a gift from  
Name \_\_\_\_\_

**THE WAYNE HERALD & MARKETER**  
114 MAIN STREET WAYNE, NEBRASKA  
375-2600 WATS: 1-800-672-3418

**FDIC-Insured Jumbo CDs**

**8.22% 7.80%**

ANNUAL YIELD ANNUAL RATE

\$100,000 MINIMUM DEPOSIT

To get the numbers above, call the number below.

**375-1848**

**IDS** IDS Financial Services Inc.  
George Phelps, CFP  
416 Main Street  
375-1848

An American Express company

Rate shown is for personal jumbo deposits and is subject to change daily. Call now for current rate information. Yield shown assumes principal and interest remain on deposit for one year at current rate. Substantial penalty for early withdrawal. © 1989 IDS Financial Corporation



# Tour

(continued from page 1A)

have been found in application. As a way of conducting the program, several devices are being attached to the anhydrous ammonia tank to help judge the amount of chemical being used. Kranz said the results will allow researchers to know how to adjust application to maintain more consistent rates. Once injected into the ground, anhydrous ammonia is used as a nitrogen fertilizer. Findings in the project will not only allow farmers to save money but it will also aid in groundwater protection and soil fertilization.

AT THE BEEF STATION, Terry Mader discussed the Integrated Reproductive Management program. Although his presentation was short, he noted statistical data which showed cow-calf reproduction through steady monitoring of feed and nutrition. Mader said phase two is being introduced but he did not discuss it any further.

Following Mader's presentation, Jim Dahlquist presented his program of shade and wind break controls on cattle. Although his program is in its first year of study, he said cattle not exposed to the elements experienced better growth while those exposed experienced a slower rate of gain.

Since the project is in its first year, data will be collected on it over the next two to three years. The most recent research of this

matter was last conducted in the 1960s and 1950s.

ACCORDING TO MIKE BRUMM, who is researching feed disappearance patterns on swine farms, inside housed pigs' feed disappearance was only 85 percent while outside housed pigs approached 100 percent.

Brumm said the implications of his findings, which was done with crowded and non-crowded pigs, are changing competition; resulting in computerized load cells to tell whether pigs are eating, which is a good indication of livestock health; and a need for consistent management records.

Complimenting Brumm's research was Tim Powell whose research was done to determine health and production benefits of crowding finisher pigs.

According to Powell's research, the best results occurred when pigs were crowded. He said pigs not crowded cost producers money because by crowding, finisher pigs are leaner, which is what investors look for. He said a crowded animal will be a leaner animal because they don't eat as much.

IN FOCUSING ON WAYS to keep the public informed about groundwater contamination, John Witkowski discussed chemigating nematodes for corn rootworm larvae control. He said finding new ways of applying chemicals is one

way to help lessen the damage done to the environment.

"If we don't pay attention now, we'll become a completely regulated society," he said.

The way he suggested to decrease chemical application is through a center pivot irrigation system. He said the soil borne organism kills the rootwork once it is applied through an irrigation system. He said by applying it through a central pivot system, less water and fewer chemicals are required.

IN A STUDY TO determine the effectiveness of double cropping, Russell Moomaw said it can be done but if done, the market in northeast Nebraska isn't right for it.

He said when done, it also requires good moisture levels, which haven't been seen at the northeast station this summer.

"In the 1990 experiment, canola, an oilseed crop, and a triticale/field pea forage mix were planted March 28," he writes in his report. "The triticale forage mix was harvested June 11 and the forage yield was 5.1-ton/acre. The same day three double crops were planted (which included corn, millet and a sorghum/soybean mix). On July 3 the canola was harvested and yield was 570 lbs./acre."

Keith Jarvi, in his discussion of insecticide residue testing on crumbe, said cultivation treatments for rootworm at reduced rates had the best results (as opposed to

planting). He added to what had been said earlier by Witkowski that farmers need to make better use of pesticides in farm production.

AS THE TOUR WAS NEARING its conclusion, Steve Rasmussen discussed the benefits of the northeast arboretum to the northeast station. He said close to 50 different species of trees are on the grounds of the station.

"Kids are going home and talking to their parents about planting trees and they're gaining a better appreciation for trees by visiting the center," he said. "That's what this is all about."

In continuing a discussion about children, Vickie Genoff noted that 4-H enrollment was up to over 76,000 members nationwide. Fifty-three percent of those members are girls and 47 percent are boys. Twenty-five percent come from farms and 23 percent are from the city.

Genoff added that the most promising program to 4-H is the involvement of the schools with enrichment programs. She said that newer program has resulted in participation of 43.6 percent of non-rural youth involvement.

To conclude the tour, Darlene Martin, who has been with the station five months, discussed the importance of water in human diets. She said her research is just getting underway.



NORTHEAST ARBORETUM curator Steve Rasmussen discusses the importance of trees.

# Agenda

(continued from page 1A)

Industries, is a little different than any reviewed by the city council in the past. Because of Griess Rexall's move, employees will be added to the First National Omaha Service Center's payroll, rather than the drug store's. Also, instead of loaning the funds to Griess Rexall, they will be granted, which means they will not be paid back.

"The way I see it, we're accommodating a \$130,000 offer for \$500,000 of economic development," Salitros told the council. "That's hard to pass up."

By taking over the southern portion of the building which now houses Griess Rexall, at Main and Sixth streets, First National Omaha Service Center will be adding 40 full time positions, employing low to moderate income people with

salaries between \$10,000 and \$15,000.

IF THE APPLICATION is approved by the city council and the department of economic development, Griess Rexall is to receive no more than a \$40,000 grant from the reuse funds, a \$10,000 grant from Wayne Industries and a \$5,000 grant from Wayne Development, Inc. It is unclear if the First National Omaha Service Center is offering any money for the move.

According to Salitros, if the grants are all approved, Griess will be putting \$80,000 of his own capital into the move for construction.

Upon approval, the drugstore would relocate in a new building at a site north of the Wayne Post Office and west of Geno's restaurant and lounge on the corner of Second and Pearl.

# Mark 'n' the spot By Mark Crist



It's a wonderful feeling to feel like you've won a debate. Now I'm not talking about the political debates you see on TV, I'm talking about the ones you have with your spouse.

I'm certain any married men out there reading this column know what I'm talking about. It's the argument you seldomly (if never) win with your wife.

The good news is that I know they can be won. I got to win my first debate with my wife of two years last Friday as we were driving to Ainsworth, Neb. en route to a wedding in South Dakota.

THE FEELING IS NEXT impossible to describe. I figure in the two-plus years since we were married, she's won over 13,000 debates and I had won none. As Bill Cosby has always said, he was the boss until he and his wife were married and that's when she took over.

That has a familiar ring to it. Now I'm certain that I'll probably lose the next debate we have and I'll probably hear about the one I won because I put it in the paper. But I wanted all those men out there to know that a debate with your spouse can be won.

ENOUGH SAID ABOUT that. I think I need to change the subject quickly before I get in too deep with Rhonda.

Some things we have planned for The Wayne Herald in the upcoming weeks is the addition of a front-page index, so if you're looking for something, it will be easier to find. In addition to that, we will see the return of the opinion page in the Thursday, Sept. 6 edition. The opinion page will appear in each Thursday issue thereafter.

Both are things we're excited about. The opinion page is considered a must in newspapers so there is a forum for communities to evaluate themselves.

Some notes of interest to the opinion page are in order, however. As has been the case in the past few years, people submitting letters to the editor have those letters signed with their full name and a verifiable residence. Our policy has been in the last few years not to print letters unless they are signed.

In addition, we are going to open up the opinion page to a variety of issues. If there is an issue you'd like to see discussed, please bring it to our attention. We also invite local guest editorials from officials.

# Pump Dixon County Court

(continued from page 1A)

waste flow has caused the pumps to temporarily shut down, resulting in problems with the lift station and stagnant odors, Salitros said.

By adding the new sensors, which have not been used in the past, constant flow will be maintained into the lift station. With the addition of the sensors, the stagnant odors will decrease, and a constant flow of waste water, rather than surges, will provide better waste treatment, Salitros added.

## IN OTHER MATTERS:

A special designated liquor permit for the Black Knight was granted although no representative from the business was at the meeting.

A special designated liquor permit for the Windmill Restaurant, Inc., represented by Cec Vander-snick, was approved for the John Hawkins and Connie Hansen wedding on Sept. 8.

## Vehicles Registered:

1991: James Toogood, Newcastle, Spartan Travel Trailer; Mort M. Henderson, Wakefield, Ford Explorer; James B. Decker, Ponca, Ford Explorer; Marlene F. Hurley, Ponca, Ford.

1990: Betty R. Benscoter, Ponca, Chev. Pk.; Verna M. Pearson, Newcastle, Ford; Lucille E. Peterson, Ponca, Merc.; Douglas L. Jensen, Wakefield, Ford; Dennis E. Hagen, Newcastle, Ford; Elaine M. Holm, Wakefield, Ford.

1989: Paul Borg, Concord, Ford Pk.

1988: Wayne C. Newton, Concord, Eagle Jeep.

1987: Larry W. Nelson, Ponca, Dodge; Stacey A. Ausdemore, Ponca, Ford.

1986: A. Daniel Brown, Wakefield, Ford; Robert H. Rhodes, Trustee, Wakefield, Nissan; Susan K. Spencer, Concord, Dodge Pk.

1985: Terry L. Nelson, Ponca, Chrysler; T. Scott Miller, Newcastle, Dodge; Raymond Brownell, Allen, Nu-Wa 5th Wheel Trailer.

1984: Mary K. Morgan, Emerson, Buick; Grant J. Fluent, Newcastle, Honda Motorcycle.

1983: Madeline C. Deneau, Ponca, Chrysler; Jeff Pick, Waterbury, Ford; Kendall Roberts, Ponca, Merc.

1982: Max Eugene Oswald, Allen, Honda Motorcycle; Chad Kneiff, Newcastle, Yamaha Motorcycle.

1981: Glenn C. Kumm, Allen, Ford Pk.; Phil Armstrong, Ponca, Kawasaki Motorcycle.

1980: Dusty Davis, Wakefield, Chev. Pk.; J.B.S. Inc., Ponca, Oldsmobile; John T. Nelson, Emerson, Ford.

1979: Vernon C. Iddings Trust, Ponca, GMC Pk.

1978: Betty Carr, Allen, Ford.

1977: Robert F. Logue, Ponca, Jeep.

1974: Fredrick Kraemer, Allen, Ford Pk.

1973: Norris Emry, Allen, Chev.

1971: Michael J. Bausch, Allen, Bonnavilla Mobile Home.

1965: Amanda Kinner, Ponca, Dodge; Gaylen D. Fischer, Allen, Chev. Pk.

1964: Gaylen D. Fischer, Allen, Chev.

1958: Jay A. Anderson, Ponca, SCF Starcraft Trailer House.

1953: Harlan M. Thompson, Wakefield, Chev. Pk.

## Court Fines:

Kevin K. Haberman, Newcastle, \$71, speeding; Gregory N. Hatten, Lakota, N.D., \$51, speeding; David B. Mentzer, Ponca, \$51, speeding;

Joseph D. Sterling, Sioux City, Iowa, \$36, speeding; Bruce L. Loll, Garland, Texas, \$51, speeding; Christopher A. Hughes, Omaha, \$71, speeding; Jennifer C. Irwin, Salem, Ind., \$36, speeding;

Francisco C. Munoz, Hays, Kan., \$51, speeding; Kari L. Bugbee, Osceola, \$36, speeding; Dorothy F. Mattes, Allen, \$51, speeding; Kenneth Y. Tyler, Sioux City, Iowa, \$51, speeding; David S. Pallas, Wayne, \$46, unlawful display of license plates; \$25, no valid registration; Christopher J. Logue, Ponca, \$71, violation of terms of special permit; Paul Broveak Jr., Hubbard, \$146, 3 months probation, reckless driving; \$100, failure to stop following accident with property damage; David E. Thoms, Arm White Bay, Canada, \$121, speeding; and \$50, no proof of financial responsibility; Lonnie L. Nelson, Norfolk, \$46, operation vessel with expired registration.

# Property Transfers

## Real Estate Transfers:

Corinthian Lodge No. 83, A.F. & A.M., a Corporation, to Educational Service Unit #1, a Political Subdivision of the State of NE, West 75 feet of lot 1, block 11, Original Town of Wakefield, together with all improvements located thereon and including Grantor's ownership use and or occupancy interest and rights, revenue stamps exempt.

Robert R. and Joy E. Bock to Michael D. and Deborah L. Hingst, a tract of real estate in the NW1/4, 26-29N-5, consisting of 15 acres more or less, revenue stamps \$19.50.

Michael D. and Deborah L. Hingst to Michael J. Bausch, single, a tract of real estate in the NW1/4, 26-29N-5, revenue stamps \$24.00.

# Census

(continued from page 1A)

tion figures fell from 390 in 1980 to 310 in 1990.

ONLY TWO TOWNS in the area recorded a population gain, according to estimates. Hoskins experienced a 0.3 percent increase in population as the census shows 307 residents in 1990, up one from 306 in 1980. Concord registered the largest increase up 2.8 percent with 145 residents in 1990 to 149 residents in 1980.

The two largest towns in the area — Wayne and Wakefield — each saw a decline in population. Wayne's numbers dropped from 5,240 in 1980 to 5,131 in 1990, a decline of 2.1 percent. Wakefield's population dropped 3.8 percent from 1,125 in 1980 to 1,082 in 1990.

Other towns' population changes are as follows: Carroll: 1980 — 246; 1990 — 237, change -3.7 percent; Winside: 1980 — 439; 1990 — 432, change -1.6 percent; Laurel: 1980 — 1031; 1990 — 971, change -5.8 percent.

Diechert said the reason population figures are likely to increase is because surveys are still being conducted.

Persons who think they may have been missed can contact the Census Bureau toll free at 1-800-999-1990.

# BACK TO SCHOOL SPECIAL FOR AREA COLLEGE STUDENTS

Keep informed on the news from home by receiving THE WAYNE HERALD twice each week while you're away at college. Back to school subscription rates for eight months: Wayne State College and Northeast Community College addresses — \$16.00. Other Nebraska college or university addresses — \$17.50. Out of state college or university addresses — \$20.00.

## ATTENTION PARENTS!

Buying a college term gift subscription for your son or daughter is just like writing them a letter TWICE each week. And a Wayne Herald "letter" includes photos and much more. RATES: In Wayne, Pierce, Cedar, Dixon, Thurston, Cuming, Stanton and Madison Counties — \$23.00 per year, \$20.00 for six months. In-state — \$22.50 per year, \$22.00 for six months. Out-state — \$30.50 per year, \$27.00 for six months.



**THE WAYNE HERALD**  
114 MAIN WAYNE 375-2600

My check is enclosed for _____	My check is enclosed for _____
Send subscription to:	Send subscription to:
NAME _____	NAME _____
ADDRESS _____	ADDRESS _____
THIS IS A GIFT FROM:	THIS IS A GIFT FROM:
NAME _____	NAME _____

OFFER EXPIRES AUG. 31, '90

Over 30 attend

## Centennial committee meets in Allen

Over 30 residents attended an Allen community centennial evening held last Thursday evening at the Senior Citizens Center in Allen.

Discussion including the ordering of flowers for centennial yards and show places in town. The local greenhouse has prepared a list of flowers and will specialize in the centennial colors of red and white. Lists of flowers were sent home with representatives of various clubs and organizations to share with their members. Orders placed before Nov. 1 will receive a discount.

A report of the Allen history book was given by Marcia Rastede. She announced that a publisher has been selected and the price will be made known when the exact number of pages and pictures have been determined.

It was reported that the cookbook also is ready to be printed and contains over 1,140 recipes. Price of the cookbook will also be determined depending on the number of pages.

The history book and cookbook are both scheduled to be ready by Christmas.

IT ALSO was reported that the Allen school has granted use of school facilities for various centennial events. The centennial committee will provide the insurance.

Deenette Von Minden has been named chairman of the royalty. She and her committee will establish the rules for selection.

Discussion also included the centennial food stand with Norma Warner as chairman. It was reported that lumber from the Winside centennial food stand has been purchased and delivered for storage until next summer's centennial celebration in Allen.

A food committee will be named to assist Warner and will include members of churches in the community.

DUANE Koester, president of the Allen Alumni Association, reported on plans for the alumni

banquet to be held during the centennial celebration.

Koester said plans are to have the banquet in the school auditorium. Groups of classes will be asked to gather at various locations

### Displaying centennial styles

The Centennial Shop of Smithland, Iowa, owned by Ardith Armour, will present a showing of centennial clothing available to rent for the entire family on Saturday, Sept. 8 at 7:30 p.m. in the Allen school auditorium.

The program is a centennial fund raiser and is being sponsored by the ELF Home Extension Club and the Young Homemakers.

The public is invited and admission is \$1 for adults and 50 cents for children.

prior to the dinner and to arrive at the auditorium at staggered times to avoid waiting in line. Details are yet to be worked out.

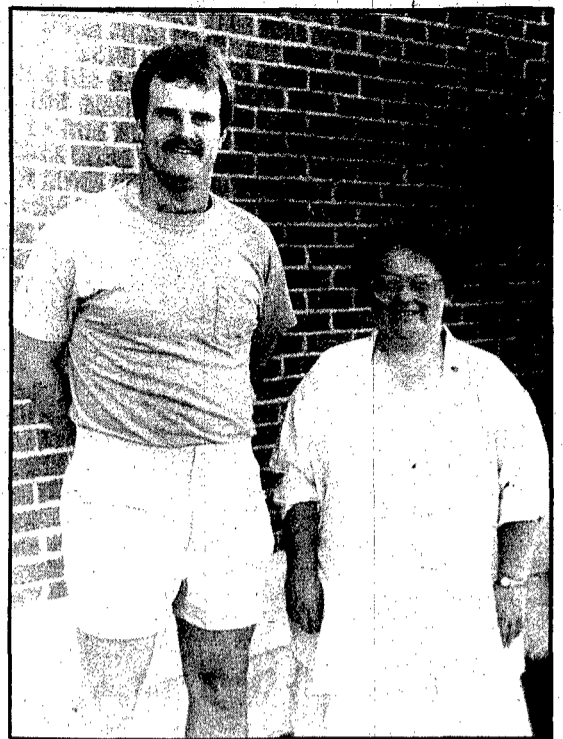
Jerry Schroeder reported on dances to take place on Friday and Saturday evenings of the centennial. Wanda Van Cleave reported on plans for a square dance.

Pastors Fraser and Green reported on the Sunday morning centennial worship service which will feature the New Life Drama Group.

The centennial parade route has been determined with Jerry Schroeder, Ken Linafelter and Richard Bupp serving on the committee.

A report of the centennial booth at the Dixon County Fair stated that over \$1,000 was received from the sale of souvenirs and tickets. The booth was manned by volunteers from the community.

ALLEN's year-long centennial celebration is scheduled to culminate on July 4-7, 1991.



Photography: LaVon Anderson

## New teachers at Allen

TWO NEW TEACHERS have joined the staff at Allen Consolidated School for the 1990-91 year. Dave Wamberg is the supervising teacher of SERC (Satellite Educational Resources Consortium). He also is serving as the junior high physical education and sports instructor as well as the assistant coach for boys basketball and track. A native of Wausa, Wamberg is also a full-time student at Wayne State College. Pat Philbrick is the new Chapter I teacher at Allen and is also serving as cheerleading sponsor. Philbrick graduated mid-term from Wayne State College last year and taught first grade during the second semester in Homer. She resides with her family in Allen where her husband, Gary, is employed by NPPD.

## Allen News

Mrs. Ken Linafelter  
635-2403

### SERVING ON BOARD

Kathy Boswell, local home economics teacher and Future Homemakers of America adviser, is serving a two year term on the State Advisory Board. Her responsibilities include: interpret and promote the work of the Future Homemakers of America in the district; coordinate and supervise district leadership training, meetings and conferences, including the annual District Leadership Conference and the SEARCH (competitive event program); attend all state advisory board meetings; and serve as a consultant for district and state officers.

The support provided and shown by the community is greatly appreciated. Any parental input and questions are welcome. Contact Kathy at Allen. As a national vocational student organization, Future Homemakers has involved over eighty million youth since its founding in 1945. It is the only in-school organization with the family as its central focus.

### RABIES CLINIC

The Allen Village Board is sponsoring a small animal rabies clinic tonight (Thursday) with Dr. Chase of Laurel, the attending vet. He will be at the Allen fire hall at 7 p.m. You are asked to bring your pet controlled on a leash.

### COMMUNITY CLUB

The Allen Community Development Club held their annual family picnic in the Allen park on Monday evening with a good crowd. A short meeting was held following the barbecue, with reports of the Allen signs which have been put up with lights. Plans were made for the coffee which was held to welcome the teachers on Thursday morning. The coffee was held at the Senior Citizens Center with faculty and staff as guests. Judy Olson, president, gave the

welcome and Superintendent Werner responded and introductions of both faculty and club members were made.

### COMMUNITY CALENDAR

Tuesday, Sept. 4: Village Board meeting, 7:30 p.m., note change in date; Senior Citizens council meeting, 10 a.m.; Order of Eastern Star meeting, 8 p.m., Masonic Hall, Wakefield, speaker and slides of Shrine Hospital, program at 8 p.m., followed by meeting.

### SCHOOL CALENDAR

Thursday, Aug. 30: Volleyball tournament at Pender.  
Friday, Aug. 31: Football, Winside at Allen, 7:30 p.m.  
Saturday, Sept. 1: Volleyball tournament at Pender continues.  
Thursday, Sept. 6: Volleyball, Coleridge at Allen.

Calvin Ellis of Denver spent several days visiting his mother, Eleanor Ellis, and other relatives the week of Aug. 11. Eleanor returned to Denver with him to visit her children in Denver, and also to attend the 25th wedding anniversary of Mr. and Mrs. Gary Ellis. The event was held Aug. 19 in the back yard at the Calvin Ellis home. Eleanor returned home Aug. 20. Recent visitors in her home were Lorraine Ellis of Sioux City, Debbie Hayes, Lacy and Logan of Buffalo Lake, Minn., Mr. and Mrs. Johnny McDonald of Seattle, Wash., and Mr. and Mrs. Lowell Cooper of Sioux City.

Mr. and Mrs. Bill Kjer entertained Mr. and Mrs. Johnny McDonald, who have been house guests of Mr. and Mrs. Loren Carr, at dinner on Saturday evening, along with Loren Carr and Mr. and Mrs. Ken Linafelter. Johnny and Helen McDonald have just retired from the state department, stationed in embassies around the world, the latest in Damascus. He is a 1941 graduate of Allen High School.

## Leslie News

Edna Hansen  
287-2346

### EVEN DOZEN CLUB

The Even Dozen Club held their annual family picnic Aug. 21, at the Wakefield park. All members and families attended. Guests were Dustin, Andy and Joel Baker of Hooper. Cards furnished entertainment for the evening. The next meeting will be Sept. 18 with Edna Hansen as hostess.  
Olga Eggli of Genoa, Sam Gloor

## Hospital Notes

Admissions: Walter Rogat, Norfolk; Inez Jackson, Allen; Virginia Bassett, Winside; Phyllis Bodenstedt, Wayne; Richard Smith, Newcastle; Mary Murtaugh, Wayne.

Dismissals: Faneuil Bennett, Wayne; Leslie Rockwell, Wayne; Laurie Ganseboom and baby girl, Wayne; Walter Rogat, Norfolk.

of Columbus and Lillian Sanders were Saturday dinner guests in the Alvin Ohlquist home in honor of Lillian's 80th birthday. In the afternoon they hosted a birthday party for Lillian at the Wakefield Care Center. Eighteen guests attended and residents of the center joined for the lunch.

Mr. and Mrs. Erwin Bottger were Sunday afternoon visitors in the Milda Boock home in Holstein, Iowa.

## Police Report

Aug. 27 — At 8 a.m. Wayne Police responded to an accident in the driveway of Casey's General Store involving a 1983 GMC driven by Dale A. Simmons, Wayne, and a parked 1989 IHC owned by Robert Pick, Norfolk. Reports said the Simmons vehicle drove into end of pipe on Pick vehicle. No estimate of damage included in the report.

## Care needed in washing Tips in cleaning contaminated clothes

AREA People who wash clothes used for pesticide mixing and application need to follow precautions, according to Joan Laughlin, professor of Textiles, Clothing and Design at the University of Nebraska-Lincoln.

In the past decade, Laughlin has researched ways pesticide-contaminated clothing can be properly cleaned to avoid recontaminating the wearer or affecting others in a family. This is important because most exposure occurs through skin contact. Work clothing such as long pants and long-sleeved shirts can help protect workers, but once contaminated from a spill or drift, the clothing can be difficult to clean the usual way, she said.

She recommends the following for satisfactory decontamination when laundering:

- Tell the launderer the clothing was worn while applying chemicals so proper care can be used.

- Read the label for information on recommended cleaning instructions.

- Wear waterproof gloves when handling chemically soiled clothes. Use the gloves only for this purpose and handle the gloves appropriately.

- Collect clothing separately. Use a plastic garbage bag or another container used only for contaminated clothing.

- Wash separately from other laundry. Chemical residues can transfer to other clothes during the wash cycle.

- Do not mix combinations of chemicals in the same wash load. This makes removal of each more difficult.

- Use a full tub of water and wash only a few items for best residue removal.

- Use hot water — the hotter the better — 120 degrees, preferably 140 degrees. Rinse temperature is not as important, Laughlin said. A cool water rinse may be used.

- Used powdered phosphate or heavy duty liquid detergent and use more of it than usual. Hardness of water does not affect the performance of the liquid detergent. However, in hard water areas (500 or more parts per million), additional powdered detergent is needed for effective cleaning when washing soil-repellent treated clothing. Use 1 1/4 times the recommended amount for either type of detergent, and even increase that if using hard water. However, do not use more than twice the recommended amount,

since this can "cushion" the agitation and decrease cleaning, Laughlin said.

- Always pre-treat clothing. Use a prewash product, soak in water, hose down outdoors, or use the washing machine prewash cycle. The nature of a prewash product can assist residue removal. If using the prewash cycle, drain the water and refill before detergent washing.

- Wash more than once, using the normal cycle. Laughlin found that clothing worn while using slightly toxic pesticides may be cleaned in one to three machine washings. For more toxic or concentrated pesticides, she strongly recommended multiple washings in order to remove excess residues. Discard clothing contaminated with concentrated, highly toxic chemicals by following the container label directions:

- Wash clothing as soon as possible after each day's use. Waiting until clothing is used more than once means the pesticide builds up and is harder to remove.

- Clean washer after use. Swab down the inside of the washer or run it through a cycle with or without detergent before using the machine for other items.

- Line dry the clothes, since many pesticides break down in sunlight.

- Use fabric starch after washing and drying. The pesticide residues cling to the starch and are more easily removed during washing. Starch also prevents pesticide from penetrating the fiber.

Pesticide applicators should wear clean clothes to apply chemicals, since residues of other soils (food, oils) attract the pesticide and make removal more difficult.

Stain and water repellent finishes for clothing provide extra protection.

Some clothing may be so badly contaminated that disposal is the best answer. The researcher warned that odor, staining or color difference do not indicate whether or not an item is still contaminated. Some pesticides naturally cause changes in color.

To avoid laundering problems and provide extra protection for the wearer, applicators may wish to wear disposable pesticide clothing.

Fabric softener and bleach generally may be used, but never use chlorine bleach when washing clothes which have ammonia fertilizers, since a fatal gas is formed.

## The Farmer's Wife

By Pat Meierhenry



All this steam heat: makes corn grow, flies stick to the side of the house, spiders spin in window sills, crickets chirp in corners, the dog lays all day in the shade and school kids swelter in classrooms. Towels don't get dry, the dehumidifier runs night and day and hair has a frizzy look. A walk even about 8:30 p.m. creates sweat.

Then I look at the guys in the Arabian desert, wearing chemical warfare suits and I realize I'm still pretty well off.

In spite of the heat, it feels like fall. The melons have finally appeared on the roadside stands. Everything has continued to look lush and green as compared to the last couple of years. Marigolds and geraniums seem to me to be unusually glorious.

Driving by all the lawn service trucks in Norfolk prompts me to wonder how much Americans spend annually on their yards.

It's very difficult to believe that the Huskers have their first game this Saturday evening. Wonder if practice in pads has been a bit warm. The Big Farmer watched Colorado and Tennessee today.

Each one of the kids has moved this summer. As Bombeck says, the kids with pickups are always popular. Jon and Kristi bought a house; Monte and Sue have left Sodak for Columbus, Nebraska and Kay moved into a two bedroom apartment so that Ann could join her.

When Ann first came back, the basement was very full and we wondered how she accumulated so much stuff. Now, suddenly, the basement is so bare. It's also very quiet.

Bob Meyer, I mostly just went to work this week. I did try out the bumper boats and go-carts and Norsports. I had a terrible miniature golf score, but I can really tear up the go-cart track. I think I was a race car driver in my other life.

And we had a pot luck supper for supervisors at the hospital. Periodically, we just have to get together for our own little support group. Florence Nightingale would not recognize hospitals today. Food, tea, brownies, gag gifts and laughter help to counteract burnout. There I go, talking about heat again!

## News Briefs

### Benefit held for Hoskins teen

HOSKINS - Approximately \$5,030 was raised during a benefit auction held Sunday evening in Hoskins for 13-year-old Maggie Stoffel of rural Hoskins. Local AAL Branch 439, will match the first \$1,000 raised.

Maggie, a victim of aplastic anemia, has been hospitalized in Omaha since mid-June and was the recent recipient of a bone-marrow transplant. The daughter of John and Lanette Stoffel, Maggie is expected to come home this week and will be an eighth grader at Norfolk Junior High School following her recuperation. She will have a private tutor during her recuperation at home. As a protective measure, she will be unable to have visitors during her recuperative period.

Sunday evening's benefit in Hoskins began with two softball games. A nearly four-hour auction of donated items followed with Orville Lage of Pilger and Bob Wesley of Hoskins donating their services as auctioneers. Refreshments also were served and about 18 of Maggie's classmates from the Hoskins area were sold during a "slave" auction.



Photography: Mark Crist

## Reaching for the stars

DURING A NICE, sunny afternoon, 8-year-old Brandon Garvin, a third grader at Wayne Elementary, flies his kite high in the sky. School began Monday for most area students.



**WINSIDE POSTMASTER TED OLSON, at left, presents a retirement certificate from the U. S. Postal Service to Ted Hoeman during a coffee held Aug. 17.**

## Hoeman stepping aside Carrier honored at coffee

By Dianne Jaeger  
Winside correspondent

Ted Hoeman of Winside was honored Aug. 17 at the Winside Post Office with a retirement coffee hosted by Postmaster Ted Olson.

Hoeman served as a rural mail carrier at Winside for 17 years prior to his resignation on July 3.

Approximately 60 friends and relatives attended the coffee during which Postmaster Olson presented Hoeman a retirement certificate from the U. S. Postal Service.

Serving cake and pouring were Mrs. Ted Olson and postal worker Lorraine Prince. Mrs. Prince also baked and decorated the two cakes.

**ALTHOUGH** Hoeman was of retirement age, his decision to do so was expedited due to health problems.

In March of 1989, at the age of 65, Hoeman retired from the Winside Volunteer Fire Department after 26 years of service. Sixteen of those years were also served as an emergency medical technician with the volunteer rescue squad.

In September of that same year he had the unfortunate experience of being on the other end of the stretcher when he suffered a heart attack early one Monday morning.

Recalling the experience brings swells of tears to both Ted and his wife Evelyn. "I thank God they are here — those precious volunteers who give their time to the community and its people," said Hoeman.

"I placed a call to the local rescue squad about 6 a.m. that morning," remembers Evelyn. "Within minutes they were here — eight or nine of them — all EMT's and friends of Ted's. They were so reassuring and comforting."

"I was really happy to see them," replies Ted. "Even with my knowledge of heart attack symptoms, I never really thought I was having one."

"I got up in the morning with a severe pain in my chest and my stomach was feeling queazy. The pain wouldn't go away and my wife decided we should call for the EMT's and get to the hospital."

HOEMAN was taken to Providence Medical Center in Wayne where it was determined he needed specialized care. He was transported to a Sioux City hospital where he remained the next 14 days. During that time he underwent two angioplasty surgeries (a balloon inserted into a vein to open it up).

"I was scheduled for 9 a.m. surgery on Wednesday morning," recalls Hoeman. "However, because of emergencies coming in all day, the surgery never took place until 5:45 p.m."

"They no sooner had me in my room, around 7 p.m., when it was determined the balloon wasn't working and they wheeled me back into surgery for another try. Finally, I was done around 10 p.m."

THE HOEMANS returned to Winside and Ted was recovering quite nicely with medications and regular checkups until June 24, 1990 when he was hit with a blood clot in his left leg near the celiac nerve.

This time his wife drove him to Wayne and he was again transferred to Sioux City for specialized care.

"I had at least four or five doctors while there. One came in, examined me, and said he was afraid I would never walk again. What a shock to your system."

Hoeman began physical therapy after the clot was dissolved with medication. "They put a brace on my leg, just below the knee, because I have almost no feeling in my foot."

Hoeman remained in the hospital until July 10, but came home able to walk with the assistance of a walker.

"I'd like to see that doctor who said I would never walk again and show him how wrong he was. That's an awful thing to tell someone when they are laying in a hospital bed."

Ted now walks with the support of a cane when out in public, but walks very nicely in his home without any assistance.

HAVING TWO emergency medical situations within a year is no cheap experience, say the Hoemans, who estimate the total bills to be between \$45 and \$50,000.

"Thank God we have medical insurance, however you still have to pay part of the bills."

"But, it's wonderful to be alive," smiles Hoeman. How do you put a price on that? And I'm so thankful for our community's volunteer EMT's.

## Procedures to apply for social security benefits

AREA - If you plan to apply for Social Security retirement benefits, but find it difficult to visit a Social Security office, you can apply by telephone. Social Security personnel will take the necessary information over the phone and arrange to complete your application by mail.

You can call Social Security's toll free number 1-800-234-5772, 7 a.m. to 7 p.m. every business day. The best times to call are early in the morning and later in the afternoon after the first week of the month. The local number is 402-371-1595.

You should apply for retirement benefits at least two or three months before you plan to stop working. This will help assure that your benefits will start the month

of your retirement. The first check should be received early in the month after the first full month of your retirement.

You will need certain documents to establish your eligibility for benefits. They include your Social Security card or a record of the number and proof of your date of birth, such as a birth certificate or religious record of birth or baptism recorded early in life. These documents must be original records of copies certified by the agency that issued them.

If you do not have the original records or certified copies, you should submit the best evidence you have of your date of birth. This includes, among others, schools

and church records, a marriage license, a passport, and employment or military service papers.

You should also have your Form W-2 for the preceding year, or, if you are self-employed, a copy of your Schedule SE. The reason is that most recent reports of your earnings may not yet have been recorded in Social Security records.

If your spouse is applying for benefits, she or he will have to provide similar evidence.

If you have any more questions, call Social Security. Our toll-free telephone service is available from 7 a.m. to 7 p.m. in all time zones weekdays. The best times to call are early in the morning and late afternoon. And if you can, it is best to call later in the week and later in the month.

## Probability high for corn freeze for some farmers

AREA - Corn producers in the North Platte River valley have a 50 percent probability of a 25-28 degree F freeze before the projected corn maturing date.

University of Nebraska climatologist Ken Hubbard at the Institute of Agriculture and Natural Resources reached that conclusion for corn which statewide is lagging five to 10 days behind normal due to cooler temperatures in July and

August. "Those farmers who have corn that is lagging behind normal growth may want to consider harvesting for silage, instead of grain," Hubbard said.

The average first frost date in western Nebraska is Sept. 15 and Oct. 13 in eastern Nebraska. Hubbard said he and the specialists on the IANR Agricultural Climate Situation Committee looked at the

probability of a frost occurring on or before the estimated maturity date for this year's corn. The specialists assumed that a late-seasoned corn hybrid was planted in eastern Nebraska, a short-season hybrid from North Platte west and a middle-season hybrid in mid-Nebraska.

For Lexington to North Platte there is a 20 percent to 30 percent probability of a frost before

## Winside News

Dianne Jaeger

286-4504

### TWO-CYLINDER CLUB

Mr. and Mrs. Carl Berg hosted a meeting Aug. 18 of the Two-Cylinder Club with approximately 35 attending from Wayne, Carroll, Wisner, Stanton, Pierce, Pender, Norfolk, Arkansas and Saudi Arabia. Randy Armstrong of Norfolk, club president, conducted the business meeting. Members also participated in an antique tractor plow for fun and had pizza.

Most club members are owners of two-cylinder John Deere tractors or have some sort of a two-cylinder gas engine. The group has members primarily from eastern Nebraska. They've been meeting for a couple years.

### HOSPITAL GUILD

September Lutheran Commu-

nity Hospital Guild workers from Winside will be Friday Sept. 14: Hilda Bargstadt, Irene Dittman and Joni Jaeger. On Tuesday, Sept. 18, workers are Lila Hansen and Rose Janke.

### RESCUE CALL

The Winside Vol. Rescue squad responded to a call at 11:30 a.m. Sunday at the Dean Janke Jr. farm home 3 south and 1/2 west. They transported Kristy Zigman to Norfolk Lutheran Hospital due to illness.

### SOCIAL CALENDAR

Friday, Aug. 31: G.T. Pinochle Club, Leona Backstrom; open AA meeting, Legion Hall, 8 p.m.

Saturday, Sept. 1: Public library 9-12 and 1-3 p.m.

Tuesday, Sept. 4: American Legion, Legion Hall, 8 p.m.

Wednesday, Sept. 5: Public library 1:30-5:30 p.m.; TOPS, Marian Iversen, 6:30 p.m.

Visiting in the Cliff and Elsa Burris home several times this summer were their grandsons, Chad Burris, 20, and Seth Burris 16 of Anchorage, Alaska; the sons of Ron Burris.

The boys also attended a Hockey school in Brainerd Minn. for three weeks. While in Nebraska they also visited their other grandparents, the Gilbert Krause of Hoskins and attended several family picnics. Chad will be attending a college in Oregon this fall.

Aug. 18-20 guests in the Carl Berg home were Howard and Teresa Berg and their three children. Howard is a nephew of Carl's and the family is visiting in the U.S. from Dhahran, Saudi Arabia where Howard is employed for a U.S. company and Teresa works for the U.S. government.

## Concord News

Mrs. Art Johnson

584-2495

### TEMPERANCE UNION

The Friendship Womens Christian Temperance Union met Aug. 21 at the Irene Magnuson home. Teckla Johnson had the program, "Send Out the Light." The group sang "This is my Father's World."

Mable Nelson gave devotions from Matthew 5:14-17 with meditation on send out the light from Social Service and Christian Outreach departments and prayer. Teckla Johnson read articles on "A Sunshine Boomerang," "Who Am I - Alcohol," "Who Takes the Blame, Murder on the Highway by a Drunkard?", "Alcohol and Pregnancy" and "Smoking/Tobacco Habits - Cancer."

Ade Prescott opened the business meeting with Mark 10:45. Roll call was answered by 10 members with a scripture verse.

A card was signed to send to Bessie Sherman. Lois Ankeny showed a leaflet on Dixon County Sheriff activities report for the year. The 1990 officers were re-elected for another year. Irene served a fresh fruit lunch.

The Sept. 18 meeting will be at the Lois Ankeny home in Dixon. It will start a new year. It will be dues month and new program books will be handed out.

### WOMENS WELFARE CLUB

A birthday party honoring Concord Womens Welfare Club August

birthdays, Betty Anderson and Mable Nelson, was held Thursday afternoon at the Senior Center in Concord. Eighteen ladies were present for the afternoon of visiting, followed by coffee, lunch and birthday cakes. The honorees received birthday cakes from their club's silent sisters. Teckla Johnson made Mable's cake and Evelina Johnson made Betty's. The cakes were served with lunch.

Irene Hanson will be hostess for the Sept. 5 club meeting.

### BON TEMPO BRIDGE

Bon Tempo Bridge Club met Aug. 22 with Donna Stalling as hostess. Mary Johnson and Ann Meyer were high scores. Sept. 5 hostess will be Marge Rastede.

Mr. and Mrs. Verneal Peterson of Laurel and Mr. and Mrs. Scott Lewis of Colorado were Aug. 18 afternoon guests of Ethel Peterson.

Friday evening guests of Ethel Peterson were Verneal and Carolyn Peterson of Laurel and Bree Bebee who has recently returned from Fort Robinson, S.C. where she was training for Army National Guards Reserves, to attend schooling here.

Dr. Jim Eckman of Grace College of the Bible, Omaha, was a weekend guest in the Roy Hanson home. Eckman was speaker at the

Sunday school convention Sunday afternoon. Guests at the Roy Hansons were Mr. and Mrs. Darold Ortegren of Holdville and Mr. and Mrs. Verlin Hanson.

Friday evening guests in the Clarence Pearson home were Duard and Esther Dempster of Orchard and Mr. and Mrs. Dean Pearson and Cindi of Phoenix, Ariz.

Attending dinner Sunday at the Black Knight in Wayne in honor of Mr. and Mrs. Dean Pearson and Cindi of Phoenix were Mr. and Mrs. Clarence Pearson, Mr. and Mrs. Jim Pearson, Tyler and Tara of Lincoln, Mr. and Mrs. Clarence Rastede, Rex Rastede, Brad Erwin, Mr. and Mrs. Verdel Erwin, Mr. and Mrs. Marlen Johnson, Mr. and Mrs. Dwight Anderson and Brooke and Pastor Layne Johnson of Sioux City. They returned to the Verdel Erwin home and had anniversary cake and ice cream in honor of Mr. and Mrs. Dean Pearson's and Mr. and Mrs. Marlen Johnson's 35th wedding anniversaries.

Thursday afternoon and supper-guests in the Brent Johnson home were Pat and Nancy Hartnett and Ellen from Chicago, Ill. Mark, Brad and Chad Johnson and Ellen Hartnett visited Evelina Johnson Friday evening.

## Service Station



Cheryl L. Jeffrey

WAYNE - Airman Cheri L. Jeffrey has graduated from Air Force basic training at Lackland Air Force Base, Texas.

During the six weeks of training, the airman studied the Air Force mission, organization and customs and received special training in human relations.

In addition, airmen who complete basic training earn credits toward an associate degree through the community college of the Air Force.

She is the daughter of Terri L. Jeffrey and Lynn W. Jeffrey, both of Wayne.

The airman is a 1987 graduate of Wayne High School.

## Wakefield News

Mrs. Walter Hale

287-2728

The Wakefield Fire and Rescue Squad is currently seeking to raise funds to purchase a new rescue unit for Wakefield. The Fourth of July events sponsored by the department raised \$2,562 towards the group's goal of \$60,000.

The squad is now planning a fall fund raiser, A Hunter's Breakfast. The breakfast is scheduled for Sunday, Nov. 4 and not only hunters, but everyone in the community is invited to attend.

The group is also accepting donations for the new unit and contributions may be made at The Wakefield National Bank or by contacting Larry Soderberg or any other member of the Fire and Rescue Squad.

### PEO Meets

PEO Chapter CZ met at the home of Vivian Uller with Vernae Luhr serving as co-hostess. Kathy

Potter introduced her program "Seek Growth in Culture".

Patricia Pixley, executive secretary of the Douglas County Historical Society and Director of the Gen. Crook House Museum, dressed in Victorian-era garb, presented "A Day in the Life of a Victorian Lady". Mrs. Pixley is sponsored through the Nebraska Humanities Resource Center of the Nebraska Humanities Council, a state affiliate of the National Endowment for the Humanities.

The next meeting will be Monday, Sept. 3 at the home of Virginia Fraser. Mary Ellen Sundell will present the program "Seek Growth in Writing and Humor".

### SCHOOL CALENDAR

Thursday, Aug. 30: Volleyball, Winside, home.

Friday, Aug. 31: Football, Elkhorn Valley, home.

Monday, Sept. 3: No School.

# Give us 4 weeks and we'll give you a great deal in return.

Save \$15 when you join by September 29.

Money. Moolah. Dough. Bread. Whatever you call it, it's yours to keep. All you have to do is join Weight Watchers by September 29th, come to four consecutive weekly meetings, and we'll refund your registration fee.

It's that simple. So hurry and join Weight Watchers. That way, you'll be able to spend four weeks learning how to lose weight. Then spend your registration fee any way you want.

**Weight Watchers.**  
Safe, sensible weight loss for 27 years.

Join now for \$24. Call

**1-800-228-2315**

Offer good September 2nd through September 29th, 1990. Fee for subsequent weeks \$9. Visa and MasterCard accepted at selected locations for prepayment. Offer valid at participating locations only. Cannot be combined with other discounts or special rates. Offer not available at AT WORK or COMMUNITY meetings. Weight Watchers is a registered trademark of WEIGHT WATCHERS INTERNATIONAL, INC. © 1990 WEIGHT WATCHERS INTERNATIONAL, INC.

Meet a **RESTFUL KNIGHTER DON LUESCHEN**

Don has been a Commodities Distribution Specialist (driver) at Restful Knights for eight months. He and his wife Anita are the parents of three year old, Amanda Marie. Don likes working at Restful Knights because he gets to see the country and meet many different people. He also enjoys the climate changes.



We Want to Earn Your Grain Business!

**CORN • BEANS**

•STORAGE •GRAIN BANKING •DRYING •TRUCKING  
•MARKETING •FLEXIBLE HOURS  
•500 BU. DUMP PIT (NEW FOR 1990)  
•LICENSED, BONDED & INSURED

Call or stop in for further information....

**385-3003 PENDER GRAIN 385-3234**  
(DIVISION OF HEESSE PRODUCE)



Mrs. Dudley Blatchford  
584-2588

COMMUNITY SUPPER

Seventy-five people attended the potluck supper Aug. 22 at the auditorium. The centennial committee sponsored the event in appreciation for everyone who helped in any way with the centennial.

Kevin Garvin showed videos of the centennial parade and program. A short business meeting was held following the videos.

DRIVERS LICENSE EXAMINATIONS

Dixon County drivers license examinations will be given Sept. 6 and 20 from 8:30 a.m. to noon and from 1 to 4:15 p.m. at the courthouse in Ponca.

BIBLE STUDY GROUP

The Dixon United Methodist Bible study met Aug. 22, in the home of Mrs. Ron Ankeny with eight members present. They will begin their study in the book of Psalms when they met on Sept. 6 in the Marvin Hartman home.

CRAFT LESSONS

Craft lessons are being held each Sunday morning following the worship service at Trinity Lutheran Church in Martinsburg in preparation for their Oct. 6 bazaar.

BEST EVER CLUB

Mrs. Earl Eckert will host the first meeting of the fall season for the Best Ever Club at her home on Wednesday, Sept. 5.

Aug. 22 afternoon luncheon guests in the Dudley Blatchford home were Mrs. Harold George, Mrs. Dea Karnes, Mrs. Garold Jewell, Mrs. Sterling Borg, Mrs. Leslie Noe, Phyllis Herfel, Mrs. Earl Eckert and Martha Walton, in observance of Mrs. George's birthday.

Genevieve Frerichs of Bloomfield was an Aug. 21 breakfast guest in the Leslie Noe home in Dixon. Mrs. Frerichs will be leaving at the end of the month to make her home in Washington state, to be near her family.

Mr. and Mrs. Kenny Kardell of Dixon were Aug. 18-19 visitors in the home of Mr. and Mrs. Dudley Kardell of Funk, getting acquainted with their new grandson, Austin Palmer Kardell. They also visited in the Bruce Anderson home in Funk and the Nina Anderson, Elna Bragg and Henry Peterson homes of Holdrege and in the Kenneth Anderson home in Axtell.

Mr. and Mrs. Lido Celli of Appleton, Wis., Clifford Jewell of Lakewood, Wis., Mr. and Mrs. Ed Luth, Mrs. Pat Arnold of Sacramento, Calif., Mrs. Bea McCoy of Norfolk, Mr. and Mrs. Ed Linn, Mrs. Alberta Erwin of Laurel, Mrs. Gary Erwin of Concord and Mr. and Mrs. Garold Jewell of Dixon met at a Laurel cafe on Aug. 20 for dinner.

A group of winter Texans met Aug. 21 at Theo's in Lawton, Iowa for noon luncheon and the afternoon. Among those attending were Mr. and Mrs. Vern Hubbard of Allen, Mr. and Mrs. Blaine Gettman of Wayne and Mr. and Mrs. Sterling Borg and Mrs. Garold Jewell of Dixon.

The Blaine Gettmans and the Garold Jewells were evening guests in the Bob McCord home in Sioux City.

Mr. and Mrs. Pat Hartnett and Ellen of Chicago left Sunday for home, after visiting it the George Bingham home in Dixon and with other relatives and friends in the area.

Aug. 19 overnight guests in the Harold George home were Mr. and Mrs. Charles Randall of St. John's Newfoundland, en route to their new home in Victoria, British Columbia, Canada.

Mr. and Mrs. Duane White of Dixon and Debbie White of Lincoln spent Aug. 16-20 in the John Lamont home in Minntrari. On Sunday Mr. and Mrs. White and Rose White of Hillcrest Care Center attended the Kayl reunion at Jackson.

Mr. and Mrs. Randy Lohse of Dixon spent Aug. 19-23 vacationing in Yellowstone National Park in Wyoming. Andy and Becky Lohse

spent the time in the Stan Weisler home in Ober.

Mr. and Mrs. Gordon McCaw of Marengo, Iowa visited Aug. 4-6 in the Earl Peterson home in Dixon and Harold Shell home in Laurel and attended the McCaw reunion at the Laurel St. Citizen's Center on Aug. 5.

Mr. and Mrs. Dwain Stanley and family of Dixon, Pat Humphrey, Brian and David of Yankton were Saturday supper guests in the Paul Thomas home in Dixon, celebrating Pat's and Paul's birthdays.

Mary Noe of Dixon met Myrtle Durrwatcher of Port Angelus, Wash., Cecelia Garceau of Kirkland, Wash., Joani Noeske and Scott Noeske of Valley City, N.D. at the Sioux City Gateway Airport on Sunday afternoon. They were guests in the Harold Hirsch home in Sioux City. They all were overnight guests in the Noe home, before going to Grand Island on Monday where they met other relatives, Dorothy Cornett and Artie Thorenson of Leads, S.D., Ruth Jones and Iona Martins of Grand Island, Mr. and Mrs. David Moses and Mrs. Rick Boeshart of Omaha, Mr. and Mrs. Keith Noe of Lincoln and Mr. and Mrs. Floyd Robley of Phillips at the Holiday Inn for dinner.

Mr. and Mrs. Dave Schutte, Kyle and Lana of Allen, Vesta Schutte, Amanda and Marie Schutte of Laurel, Mr. and Mrs. Al Jani, Lauren, Alexis and Lydia of Cranbury, N.J. and Mr. and Mrs. Marlin Bose, Andy and Katie of Dixon were Sunday guests in the Bob Schutte home in Papillion.

The Jani family and Lana Schutte spent Aug. 20-24 vacationing in Yellowstone Park and the Badlands in South Dakota. The Jani family left for their home in New Jersey on Monday morning.

Mr. and Mrs. Gerald Stanley of Dixon were Aug. 22 supper guests in the Jerry Wells home in Norfolk.

Mrs. Jack Hintz and John of Dixon attended the Nelson reunion at Faith Lutheran Church in Maskell on Aug. 19.

Sunday visitors in the Kenny Diediker home for the hostess' birthday were the Kevin Diediker family of Dakota City, Dorothy Hassler and Mr. and Mrs. Melvin Manz of Dixon.

Mr. and Mrs. Sterling Borg joined other members of the Logan Valley Sams that camped at Mórmon Island State Recreation area near Grand Island Aug. 27-29.

Mr. and Mrs. Bill Garvin and Kevin of Dixon, Cindy Garvin of Leigh and Janet Stabbe of Fremont

were Sunday dinner guests in the Lorrie Garvin home in Fremont. En route home the Garvins visited Mrs. Marian Row and Janet at Arlington and in the Tim Garvin home in Wayne for the hostess' birthday.

Thursday evening guests in the Gene Quist home in Dixon were Mr. and Mrs. Bob Quist of Anchorage, Alaska, Myrtle Quist, Mr. and Mrs. Morton Frederickson, Mr. and Mrs. Tom Frederickson, Jon and Andy, the Jim Lipp family of Laurel and Mr. and Mrs. Sterling Borg of Dixon. The Bob Quists left for home on Monday, after a week's visit.

Mr. and Mrs. Dave Schutte, Kyle and Lana of Allen, Vesta Schutte, Amanda and Marie Schutte of Laurel, Mr. and Mrs. Al Jani, Lauren, Alexis and Lydia of Cranbury, N.J. and Mr. and Mrs. Marlin Bose, Andy and Katie of Dixon were Sunday guests in the Bob Schutte home in Papillion.

The Jani family and Lana Schutte spent Aug. 20-24 vacationing in Yellowstone Park and the Badlands in South Dakota. The Jani family left for their home in New Jersey on Monday morning.

Mr. and Mrs. Gerald Stanley of Dixon were Aug. 22 supper guests in the Jerry Wells home in Norfolk.

Carroll News

SOCIAL CALENDAR

Thursday-Friday, Aug. 30-31: Methodist Rummage sale, 8 a.m.-5 p.m.

Monday, Sept 3: Senior Citizens, fire hall, 2 p.m.

Tuesday, Sept. 4: American Legion, 8 p.m.

Wednesday, Sept 5: Hilltop Larks, Mrs. Merlin Malchow; Presbyterian Women.

Mr. and Mrs. Frank Gilmore were hosts at a picnic supper in the Carroll park Sunday evening honoring Morten Lundsgaard, Ikast, Denmark, who will complete his senior year at Wayne-Carroll high school as an exchange student.

About 40 were present for the gathering. The evening was spent socially and the younger crowd enjoyed volleyball.

In observance of Don Harmer's birthday, guests at the Davis Steakhouse for dinner Saturday were: Mr. and Mrs. Russell Longnecker, Jason, Julie and Josie, Mr. and Mrs. Herb Wills, all of Winside; Bonnie Smith and Kelsie Smith; Cabool, Mo.; Connie Bacon, Ava, Mo.; Lillie Miller, South Sioux City; Harold Harmer, Mr. and Mrs. Jim Harmer and Joshua, Mr. and Mrs. Don Harmer, Mrs. Geneva Bowers.

Afternoon guests in the Harmer home were Sherri Klentz, Seth and Chelsie, Grand Island, Mr. and Mrs. Lynn Roberts and Mr. and Mrs. Don Frink.

Evening visitors were Mr. and Mrs. Don Harmer and Mr. and Mrs. Wayne Kerstine.

Machinery fire near Winside

WINSIDE - The Winside Volunteer Fire Department was called to a machinery fire on Aug. 26 at 11:40 a.m. in a field owned by LeRoy Herscheid, located one mile south and one east of Winside.

A custom windrower was burning and was completely destroyed. No injuries were reported and the owner of the machine was not known.

Public invited to attend

Housing to be topic of regional meetings

AREA - Nebraskans are being asked to help shape state policy regarding housing during any of four public meetings scheduled across the state by the Governor's Housing Policy Coordinating Council.

"This is an excellent opportunity for the citizens of Nebraska to express their ideas and views for developing state housing policy. Our housing needs are different in some communities than in others, and this will help Nebraska shape a comprehensive program," said Governor Kay Orr.

The meeting in this area will take place in Norfolk on Sept. 13 at the Northeast Community College student center at 7 p.m.

Governor Kay Orr appointed Gary Rex as the State Housing Coordinator last November with instructions to improve coordination of the state's housing programs and activities. Representatives from the Nebraska Investment Finance Authority (NIFA) and from various state agencies that have housing-related responsibilities make up the Governor's Housing Policy Coordinating Council.

"The Governor is very interested in ensuring that Nebraska has adequate housing for its families. The ability to maintain our state's high quality of life, and to attract new business growth, both depend heavily on the provision of adequate and affordable housing for each of our citizens," said Rex.

The Governor's Housing Policy Coordinating Council has published a "Resource Guide," cataloguing housing and homeless programs available in Nebraska. The guide, to be distributed at the meetings, is a useful resource for local and state officials, as well as the general public, giving a brief description of services offered, and the names, addresses and phone numbers of those who can provide further information.

Anyone unable to attend the housing forums may submit written ideas and suggestions to the Governor's Housing Policy Coordinating Council, Room 1319, State Capitol, P.O. Box 94601, Lincoln, Neb. 68509.



From left, Cathy Trevett - Bookkeeper, Jeanette Swanson - Bookkeeper, Kristy Otte - Bookkeeper, Terri Jeffrey - Operations Officer, Jess Thompson - Bookkeeper.



The State National Bank and Trust Company

Wayne, NE 68787 • 402-375-1130 • Member FDIC  
Main Bank 116 West 1st • Drive-In Bank 10th & Main

**GREAT SAVINGS DURING OUR 56TH ANNIVERSARY SALE**

*We have looked over our stock and found some items haven't sold that we wanted to sell so further reductions have been made. See these great savings today!*

<p><b>EXTRA SPECIAL SAVINGS</b> REG. \$699.95 QUEEN SLEEPER WAS \$499.95 1 - ONLY NOW ONLY</p> <p><b>\$399.95</b></p>	<p><b>EXTRA SPECIAL SAVINGS</b> REG. \$499.95 EARLY AMERICAN SOFA WOOD TRIM - CONTRASTING WELTS SAVE ANOTHER \$40.00 1 - ONLY NOW ONLY</p> <p><b>\$259.95</b></p>
<p>REG. \$599.95 TRADITIONAL STYLE SOFA BLUE &amp; MAUVE COVER 1 - ONLY ONLY</p> <p><b>\$299.95</b></p>	<p>REG. \$499.95 SOFA BROWN &amp; MAUVE COVER 1 ONLY - ENJOY THIS NEW SOFA FOR ONLY</p> <p><b>\$299.95</b></p>
<p>REG. \$1,099.95 3 PIECE CORNER GROUP WITH INCLINERS ON EACH END - PILLOW BACK STYLING SAVE EVEN MORE ON THIS</p> <p><b>\$759.95</b> 3 PIECE</p> <p>NOW ALL THREE PIECES ONLY</p>	
<p>QUEEN SIZE MATTRESS &amp; BOX SPRING REG. \$399.95 NOW ONLY</p> <p><b>\$229.95</b> SET</p>	<p>REGULAR SIZE MATTRESS &amp; BOX SPRING REG. \$229.95 NOW ONLY</p> <p><b>\$169.95</b> SET</p>
<p>ODDS &amp; ENDS TWIN SIZE BOX SPRINGS</p> <p>NOW ONLY <b>\$46.88</b> EACH VALUES TO <b>\$119.95</b></p>	
<p>REG. \$849.95 5 PIECE DINETTE SWIVEL CASTOR-CHAIRS</p> <p>NOW ONLY <b>\$499.95</b></p>	<p>\$499.95 5 PIECE MAPLE DINETTE SET SEE THIS FOR ONLY</p> <p><b>\$349.95</b> 5 PIECES</p>
<p>REG. \$429.95 PINE DRESSER W/HUTCH MIRROR</p> <p>NOW ONLY <b>\$299.95</b></p>	<p>5 DRAWER OAK FINISH CHEST ONLY</p> <p><b>\$89.95</b></p>
<p>BLUE &amp; MAUVE 2 PIECE GROUP SOFA &amp; MATCHING LOVE SEAT</p> <p><b>\$269.95</b> 2 PIECE</p>	<p>REG. \$299.95 CHARLES - SWIVEL ROCKERS 2 ONLY</p> <p><b>\$149.95</b></p>
<p>REG. \$209.95 BLUE VELVET HI BACK SWIVEL ROCKERS 2 ONLY</p> <p><b>\$149.95</b></p>	<p>REG. \$699.95 TRADITIONAL SOFA HERCULON COVER</p> <p>NOW ONLY <b>\$459.95</b></p>
<p>REG. \$319.95 ENTERTAINMENT CENTER OAK FINISH 1 ONLY</p> <p>NOW <b>\$189.95</b></p>	<p>REG. \$199.95 4 DRAWER CHEST PINE FINISH 1 ONLY</p> <p><b>\$149.95</b></p>

**Don't Miss This Great Anniversary Sale... SAVE - SAVE - SAVE - SAVE - SAVE - SAVE**

**DISCOUNT FURNITURE**  
YOUR FURNITURE HEADQUARTERS FOR N. E. NEBRASKA  
1 1/2 MILES NORTH OF WAYNE - PHONE 375-1885  
FREE DELIVERY

# WAYNE'S PAC 'N' SAVE

DISCOUNT SUPERMARKETS

HOME OWNED & OPERATED

WEST HWY. 35 PHONE 375-1202

HOURS: MONDAY - SATURDAY 7:30AM - 10:00PM SUNDAY 8:00AM - 8:00PM

## DELI

- Wimmer's DRIED BEEF ..... Lb. \$5.89
- Wimmer's Sussex SUMMER SAUSAGE ..... Lb. \$3.39
- TURKEY BREAST ..... Lb. \$3.99
- Loughorn CHEESE ..... Lb. \$2.59
- Reg. or Mustard POTATO SALAD ..... Lb. 99¢
- 16-Piece & 4 1-Pint Salads CHICKEN ..... \$12.99

FRIDAY & SATURDAY  
11 AM to 5 PM  
TAVERNS  
**2/\$1.00**  
POP  
30¢



Grade A Whole Frying CHICKEN

59¢ Lb.

USDA Choice T-BONE STEAK

\$4.89 Lb.

Be Sure To Check Our Weekly In-Store Flyer For Additional Bargains!

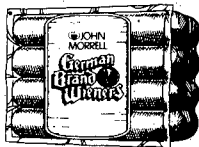


Norbest Self Basting 10 to 16 Lb. TURKEY

79¢ Lb.

USDA Choice Top Round ROAST

\$1.99 Lb.



John Morrell 16-Oz. GERMAN WIENERS

\$2.39

John Morrell 16-Oz. Jumbo, Reg. or Bigger Than The Best FRANKS

DELI PIZZAS  
WHEN YOU BUY 2 DELI PIZZAS, GET FREE 2-LITER POP

Reg. or Diet RC, Squirt, Orange Crush or Dr. Pepper



LABOR DAY HOURS - 8 A.M. - 8 P.M.

# LABOR DAY SPECIALS



Starkist 6.5-Oz. Oil or Water Pack TUNA

55¢

Van Camp's 16-Oz. PORK & BEANS

3/89¢



Green Giant 16-Oz. BAKED BEANS

3/99¢



French's 16-Oz. Squeeze MUSTARD

88¢

Heinz 28-Oz. Squeeze KETCHUP

\$1.29



Shurfresh 10-Ct. Hot Dog or 8-Ct. Hamburger BUNS

2/\$1.00

Old Home Buttertop White or Wheat BREAD 79¢



Instant 3.6-Oz. NESTLE'S 25¢



Royal 3-Oz. Reg. or Sugar Free GELATIN 4/\$1.00



Royal 3-Oz. Reg. or Sugar Free PUDDING 3/\$1.00



Del Monte 4-Pack PUDDING CUPS 88¢

Royal No-Bake All Flavors CHEESE CAKES \$1.49



Prell SHAMPOO or CONDITIONER 15-Oz. \$2.99

Head & Shoulders Dandruff or Dry Scalp Formula SHAMPOO ... 15-Oz. \$3.69

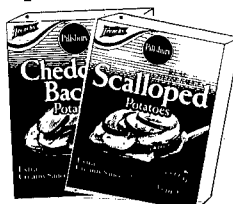
Budget 2-Lb. Bag ELBOW MACARONI or SPAGHETTI

88¢

Goch's MACARONI SALAD DINNER

2/89¢

Goch's 7.5-Oz. MACARONI & CHEESE DINNER 4/\$1.00



Pillsbury 6-Oz. SPECIALTY POTATOES 79¢



Shurfine 6-Oz. Pitted RIPE OLIVES 88¢

Vlasic 24-Oz. Assorted DILL SPEARS \$1.29



Shurfine 10-Oz. Stuffed Spanish OLIVES \$1.19

Kellogg's 15-Oz. CORN POPS 17-Oz. HONEY SMACKS 15-Oz. FRUIT LOOPS 15-Oz. APPLE JACKS

\$2.79

FREE CEREAL With Mail-In Rebate Found On In-Store Flyer

Orchard Hill 64-Oz. APPLE JUICE 88¢

Pillsbury 22.5-Oz. Family BROWNIES 99¢

Kool-Aid 3-Pack KOOLERS 99¢

Kraft 10-Oz. Puffed or Mini MARSHMALLOWS 59¢

Two 3-Packs/99¢ WITH COUPON FROM IN-STORE FLYER

Whole Norfolk WATERMELONS

10¢ Lb.

Fresh Norfolk MUSKMELONS

89¢ Ea.

CUT UP 15¢ Lb.

Fresh Idaho PEACHES

49¢ Lb.

26-Lb. Lug \$10.49

Colorado 1-Lb. CARROTS

15¢

12-Pack Reg. or Diet PESI, SLICE, or MT. DEW

\$2.59

Pillsbury GRAVY MIXES 4/\$1.00

Kellogg's 15-Oz. CORN POPS 17-Oz. HONEY SMACKS 15-Oz. FRUIT LOOPS 15-Oz. APPLE JACKS

\$2.79

FREE CEREAL With Mail-In Rebate Found On In-Store Flyer

Orchard Hill 64-Oz. APPLE JUICE 88¢

Pillsbury 22.5-Oz. Family BROWNIES 99¢

Kool-Aid 3-Pack KOOLERS 99¢

Kraft 10-Oz. Puffed or Mini MARSHMALLOWS 59¢

Two 3-Packs/99¢ WITH COUPON FROM IN-STORE FLYER

HEALTH BEAUTY



Louis Rich Hickory Smoked,  
Oven Roasted or Honey Roasted  
**BREAST OF TURKEY**

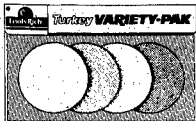
**\$289**  
Lb.

Louis Rich 9-Oz.  
**BREAST VARIETY  
PACK**

**\$1 99**

Louis Rich 12-Oz.  
**TURKEY VARIETY  
PACK**

**\$1 99**



Ohse Assorted 12-Oz.  
**LUNCHEON MEAT**

**99¢**

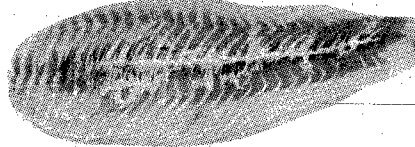
Ohse 12-Oz.  
**MEAT FRANKS**

**59¢**



**ORANGE ROUGHY  
FILLET**

**\$3 69**  
Lb.



**"HUSKER POWER CLUB"**

One Grand Prize - 2 tickets to the Nebraska Vs Colorado football Game on November 3, 1990. Personal tour of the Nebraska strength and conditioning facilities by Boyd Epley. Hotel and meal accommodations provided Nov. 2, & Nov. 3, at the Clayton House Hotel. (Approx. value \$200)

Two Second Prizes - 2 tickets to the Nebraska Vs Oregon State football game on September 29, 1990. Also, an invitation to a free tailgate party before the game hosted by Louis Rich and Kraft. (Approx. value \$40)

Contest Rules:

- 1) Start in year completed entry blank before September 9, 1990. Attach a U.P.C. from any Louis Rich Product, Kraft Deluxe American Slices or Miracle Whip Salad Dressing or 3 1/2 x 5 Card with Louis Rich or Kraft printed on it.
- 2) Entries must be post marked on or before September 9, 1990.
- 3) Prizes will be drawn September 18, 1990. Winner will be notified by phone by Sept. 25, 1990.
- 4) Employees of KGF companies and their immediate families are ineligible.
- 5) Winners must provide their own transportation.
- 6) Subjects to official rules which are available by sending a self-addressed, stamped envelope to Contest Rules, P.O. Box 37546, Omaha, NE 68137. No purchase necessary, void where prohibited by law. Must be 18 years or older.

Mail Entry To: **HUSKER POWER CONTEST** - P.O. BOX 37546 - OMAHA, NE 68137

Mechanical Reproductions will not be honored

Name: \_\_\_\_\_ Phone: \_\_\_\_\_  
Address: \_\_\_\_\_ Age: \_\_\_\_\_  
City: \_\_\_\_\_ State: \_\_\_\_\_ Zip: \_\_\_\_\_

Store you purchased your product from: \_\_\_\_\_

USDA Choice <b>PORTERHOUSE STEAK</b> . . . . . Lb.	<b>\$4 09</b>
USDA Choice Boneless Top <b>ROUND STEAK</b> . . . . . Lb.	<b>\$2 09</b>
Lean and Tender <b>MINUTE STEAK</b> . . . . . Lb.	<b>\$2 39</b>
Grade A Split Frying <b>CHICKEN</b> . . . . . Lb.	<b>69¢</b>
Split Frying <b>CHICKEN BREAST</b> . . . . . Lb.	<b>\$1 29</b>
Shurfresh Sliced <b>SMOKED BACON</b> . . . . . 12-Oz.	<b>\$1 19</b>
Wimmer's Skinless <b>WIENERS</b> . . . . . 2.5-Lb.	<b>\$5 09</b>
Hormel 12-Oz. Reg. or 10-Oz. Patties <b>LITTLE SIZZLERS</b> . . . . .	<b>99¢</b>
Hillshire Fresh or Beer - Mild or Hot <b>BRATWURST</b> . . . . . Lb.	<b>\$1 89</b>
Hillshire <b>CHEDDARWURST, POLISH SAUSAGE, SMOKED BRATS</b> . . . . . Lb.	<b>\$2 59</b>
Longmont <b>TURKEY HAM</b> . . . . . Lb.	<b>\$1 39</b>

FREE SAMPLES FRIDAY & SATURDAY

**OUR MEAT DEPARTMENT  
FEATURES ONLY  
USDA CHOICE CUTS!  
There is a difference!**

**Fresh Iceberg Head  
LETTUCE**  
2 Heads/**89¢**

7 Seas 16-Oz.  
Viva Italian  
or Viva Ranch  
**DRESSING**  
**\$1 29**

Hefty 50-Ct.  
8 7/8-Inch  
**STYRO  
PLATES**  
**99¢**

Dixie 7-Oz.  
**COLD CUPS**  
**\$1 49**

Delta Jumbo Roll  
**TOWELS**  
**2/\$1 00**

Raid 16-Oz. Aerosol  
**ANT & ROACH**  
**\$2 49**

Raid 12-Oz.  
**FLYING INSECT**  
**\$2 39**

Raid 3-6-Oz.  
**ROOM FOGGER**  
**\$5 39**

Surf New System  
64-Oz. Liquid  
**LAUNDRY  
DETERGENT**  
**\$3 19**

WE RESERVE  
THE RIGHT  
TO LIMIT  
QUANTITIES

Kingsford 20-Lb.  
**CHARCOAL**  
**\$4 99**

Sparkle 140-Ct.  
**NAPKINS**  
**79¢**

Palmolive 28-Oz. Liquid  
**DISH SOAP**  
**\$1 69**

Come & Get It 4-Lb.  
**DOG FOOD**  
**\$2 69**

Snuggle 64-Oz.  
**FABRIC SOFTENER**  
**\$1 69**

Blue Bunny 5-Qt. Pail  
Vanilla Only  
**ICE CREAM**  
**\$2 99**

Robert's 24-Oz.  
Reg. or Low Fat  
**COTTAGE  
CHEESE**

Gourmet Award 32-Oz.  
**PRESERVES**  
**\$1 39**

Old Orchard 12-Oz.  
**LEMONADE**  
**3/\$1 00**

Parkay 1-Lb. Stick  
**MARGARINE**  
**2/89¢**

Quaker Chewy  
**GRANOLA BARS**  
**\$1 89**

Original  
**wheat  
CRACKERS**

Gourmet Award  
**MANDARIN  
ORANGES**  
**2/\$1 00**

Selected Nabisco  
7 to 10 Oz.  
**SNACK  
CRACKERS**  
**\$1 39**

Banquet 28-Oz.  
**FRIED CHICKEN**  
**\$2 19**

Rich's 16-Oz.  
**WHIPPED  
TOPPING**  
**99¢**

Tombstone  
12-Inch Regular  
**PIZZA**  
**\$2 69**

Lynden Farms 1.5-Lb.  
**FRYS WITH  
PEELS**  
**3/\$1 00**

Robert's 16-Oz.  
**SOUR CREAM  
or CHIP DIP**  
**79¢**

Kraft 12-Oz.  
**AMERICAN  
SINGLES**  
**\$1 99**

First National  
**BAGELS**  
**89¢**

Kraft  
9.3-Oz. Bonus  
**PARMESAN  
CHEESE**  
**\$2 59**

Crystal Farms  
Lite Soft  
**CREAM CHEESE**  
**89¢**

Pillsbury 4-Pack  
**BISQUITS**  
**89¢**

Sure 1.7-Oz. Wide Solid,  
1.7-Oz. Roll-On or 4.2-Oz. Aerosol Spray  
**ANTIPERSPIRANT/  
DEODORANT** . . . . .  
**\$1 99**

12-Oz. Original or  
8-Oz. Maximum Strength  
**PEPTO-BISMOL** . . . . .  
**\$2 99**

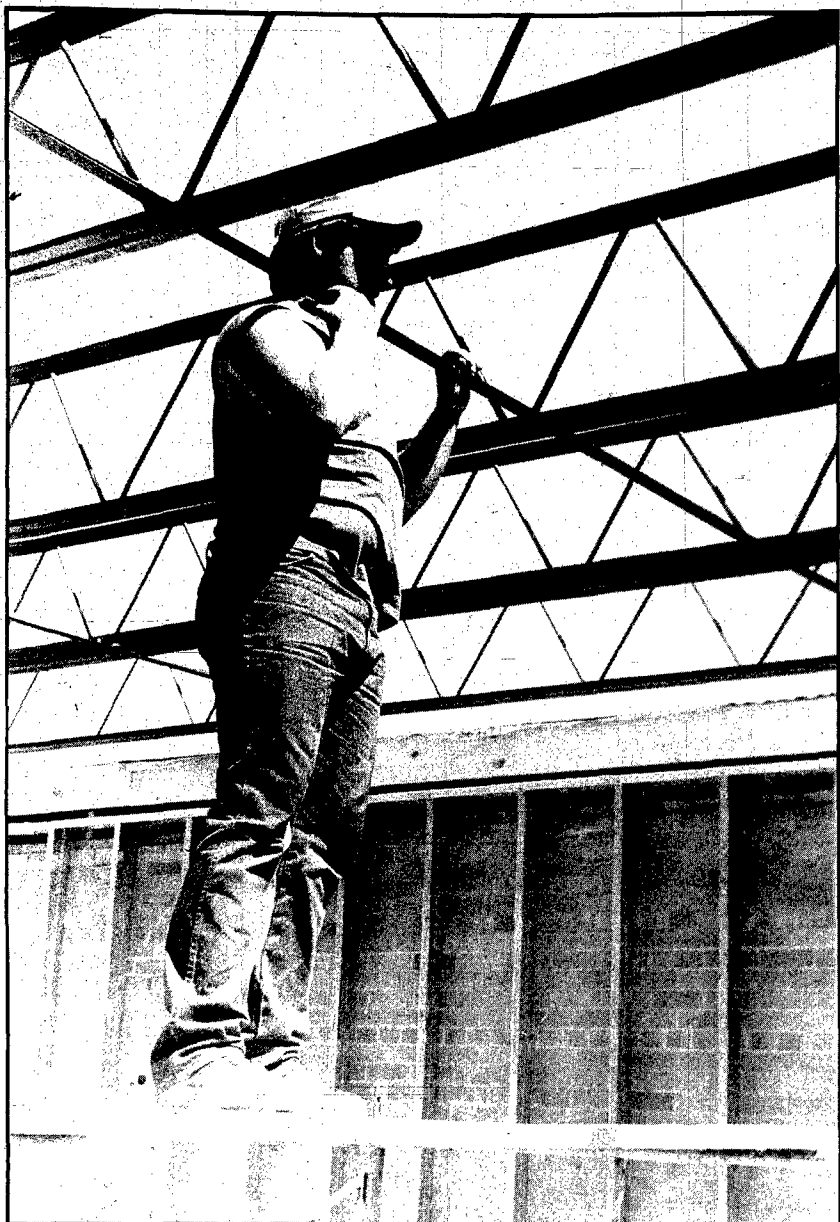
Country Pride 12-Oz.  
**CHICKEN CHUNKS**  
**2/\$2 99**

Cafe Peking  
**EGG ROLLS**  
**2/\$4 00**

North Star  
**LOTTA POPS**  
**99¢**

**WAYNE'S  
PAC 'N' SAVE**  
**DISCOUNT SUPERMARKETS**  
HOME OWNED & OPERATED  
WEST HWY. 35 PHONE 375-1202  
HOURS: MONDAY - SATURDAY 7:30AM - 10:00PM SUNDAY 8:00AM - 8:00PM





Photography: Mark Crist

## Adding some support

WITH SCHOOL STARTING Monday, Otte Construction of Wayne is busy working to wrap up construction on the new addition to West Elementary. Pictured, Jamie Bonde stretches out two beams along what will eventually make the roof for the new addition.

## Program working Mediation helping farmers

LINCOLN - Since its inception in October, 1988, the Nebraska Farm Mediation Program has received over 350 requests for mediation services. Of those requests completing the mediation process, over 85 percent have reached some type of agreement.

In 1988, the Nebraska Legislature enacted the Farm Mediation Act. It was designed to help agricultural borrowers and creditors find a resolution to their financial disputes through the use of mediation and without costly litigation. According to Mark Galvin, Farm

Mediation Administrator, "The mediation process works by assigning a mediator to each case to help the parties with their negotiations. He or she is an impartial person who helps the parties define the problem, identify their interests, look for different options and ideas for resolution, and draft an agreement if one is reached. The mediator does not decide anything for the parties, but lets them work out their own solution."

"Being able to make your own decision as opposed to being told what's going to happen makes

mediation different from other forms of dispute resolution," Galvin said. "Because of this, farm mediation works best when there are still options available to the parties. A mutually agreeable solution is more likely if mediation is used before the parties are committed to anything specific."

Anyone in need of mediation or interested in finding out more about the program should call the Nebraska Farm Mediation Service through its toll-free number 800-446-4071 or contact the Nebraska Department of Agriculture.

## Conservation practices examined by talking to neighbors

LINCOLN - With a temporary late-summer lull in work being enjoyed by many Nebraska farmers, now is a good time for them to see how their neighbors are making a wide range of conservation practices work for them, the director of an innovative statewide conservation program said.

Alice Jones, a University of Nebraska extension soil erosion control/conservation tillage specialist, said the "Conservation Neighbor to Neighbor" program is now in its second year. Last year there were about 350 sites distributed among most Nebraska counties. The number now has grown to more than 450, Jones said.

The sites include a wide range of conservation practices, including conservation tillage, use of cover crops, wildlife habitat, irrigation scheduling, low-input agriculture, grazing management, terraces and windbreaks. In most cases, these are established practices that the host farmers and ranchers have been using for years, she said. That being the case, the hosts can provide a wealth of practical information to interested operators.

"This is a vehicle in which those less experienced with conservation methods can learn directly from their more experienced peers," Jones said. "We felt it was a way for producers who are looking for practical information rather than technical data to network on a wide range of practices."

Booklets listing conservation sites, types of practices and directions for finding them are available through local Cooperative Extension, Natural Resource District, Soil Conservation Service and Agricultural Stabilization and Conservation Service offices. The field sites are marked with signs easily visible from the road, Jones said.

On most sites, visitors have a choice of taking self-guided tours or contacting the host for more information. And groups, including school classes and business and civic organizations, also are welcome.

Jones said the program's reception has been encouraging. A survey taken in 20 selected counties last winter revealed that about 25 percent of producers in those counties had heard about the program, she said, and many had visited one or more sites. That compares favorably with one-day events, which typically reach only 5 percent to 10 percent of area producers.

"With fairly minimal costs, we've been able to reach a good percentage of our target audience," Jones concluded. "It has been a good return on our investment."

## The Library Card

This column is written twice a month to inform the Wayne area as to what types of reading material and other items are available at Wayne Public Library.

People ask us about our hours:

Beginning Tuesday, Sept. 4, we will be operating on our winter schedule:  
Monday-Thursday, 1:00 - 9:00 p.m.; Friday, 1-6 p.m., Saturday, 10 a.m.-6 p.m.; Sunday, 2-5 p.m.

If we are not open when you come by to return books, you may put them in the book drop at the foot of the outside stairs. We ask that you do not put videos in the bookdrop, but bring them in and place them on the return desk.

People ask us about fines on overdue books:

Books are checked out for two weeks and may be renewed for one more two week period. Fines are assessed on books overdue at the rate of 5 cents per book per day. There is no grace period. We would appreciate having fines paid promptly and books returned on time.

People ask us about obtaining books from other libraries:

The Wayne Public Library is linked to other libraries in the state through a computer hook-up. It is a simple matter for us to put your request on the computer. We receive the books within 2 or 3 days (depending on the location of the lending library). The patron pays a \$.50 handling fee plus cost of postage. Interlibrary loan books are usually checked out for 1 month. If we do not have the books/articles you are interested in, please ask us about interlibrary loan possibilities.

People ask us about reserving books:

We are happy to put your name on the reserve list for any book not on the shelf when you come in. We will call you when the book is returned. All it takes is your name and phone number and a library card!

People ask us about renewing books:

Books may be renewed for 2 weeks beyond the original 2 week check-out period. Patrons may either phone in the request or renew books at the check-out desk. Be ready to give us the due date, the author's name and the title of the books you are renewing.

People frequently ask us "How many books do I have out?"

This is one question we have difficulty answering! We keep the book cards filed by date due, not by patron name. If you have overdue books, or think you do, we file the cards alphabetically by author's last name. We generally do not have time to go through all the cards to find your books. Since we do not use patron's names in checking out books, but the card number issued to the patron, we have further problems in answering the question. Would it be asking too much if, when you check out books, you would keep a list, or at least the number of books you are taking out?

People have complained recently about finding sections of some magazines torn out. Our patrons should remember that damaging or defacing library materials is a misdemeanor and can result in fines or loss of library privileges. If you find an article, recipe or picture that you wish to keep, ask at the desk to have it copied on our copier. The cost is minimal - 10 cents a page for library material, 15 cents a page for patron-owned material.

## Parents, 'Did you Know?'

According to the Nebraska School Activities Association policy, unsportsmanlike conduct shall include physical or verbal assault upon any participant, game official or spectator, or any acts which may endanger the personal safety of individuals involved, or acts which hinder the normal progress of a contest or lead to the restriction of discontinuance of a contest.

Wayne Public Schools Board of Education policy states: A student may be suspended from participation or attendance at extracurricular

activities for unsportsmanlike conduct, fighting, use of profanity or obscene words and the deliberate causing of serious injury to another person.

Adult leadership in the area of sportsmanship is a must. Young children tend to emulate the behavior of adults. Through community cooperation we can create enthusiasm for our teams yet be humble in victory and gracious in defeat. We want to be a "class act" at Wayne High School.

# FARM AUCTION

## Sat., Sept. 8, 1990 10:30 a.m.

LUNCH ON GROUNDS - NOT RESPONSIBLE FOR ACCIDENTS - LOCATION: 2 1/2 miles north of Beemer, NE on Highway 20A link, or 2 1/2 miles south of Hilltop Feed at Junction 51 at 20 A. AUCTIONEERS COMMENTS: Mr. Nellor passed away recently and the family is selling all of his fine line of farm machinery and livestock equipment along with a few items of household and collectibles. The auction will begin with tools and shop items at 10:30 with the household and collectibles selling at app. 12 noon followed by livestock equipment, fencing, machinery and tractors.

### TRACTORS

JD 4020 Dual with cab serial no. 229480A  
Allis 180 Diesel, double outlet  
Farmall M with quick tack Westendorf loader, live power, new clutch w/ Farmall Super M with live power, cylinder and tractor chains, w/ Ford 8N tractor

### MACHINERY

JD 4 row 7,000 corn planter w/insecticide box with monitor  
Schweerts snow blower, 3 pt., 8 ft. new  
Heston No. 30A Stacker  
No. 30 Heston stack mover  
Heston 14 ft. windrower, No. 1014  
Kewanee 14 ft. tandem disc No. 750  
76x14 barge wagon with hoist, Doehrmann box  
JD 5 bottom steerable plow with harrow  
New Idea sprayer, very good, No. 217  
New Idea picker, sheller, 2 row, No. 234  
New Idea corn picker, 2 row, No. 311  
Kewanee 50 ft. elevator, very good  
Franklin gravity flow wagon, model 231, 250 bu. size, 8 ton Westendorf gear  
Dakon gravity flow wagon, 300 bu., 12 ton gear  
Dakon gravity flow wagon 200 bu. JD gear  
JD side rate No. 896A  
2 row JD cultivator, RC4  
JD No. 8 bar mower, 9 ft. bar  
JD tandem disc, 13 1/2 ft.  
Valley 40 ft. elevator  
3 bottom case plow 5 section harrow with Lindsey cart  
Big John 8 row sprayer, 300 gal. tank pull type  
Endgate seeder  
6 ft. 3 pt. blade  
3 pt. post hole digger  
1 wagon steel box with hoist  
Hay crimper No. 402  
2 old running gears  
4 300 gal. fuel tanks  
Small cement mixer with electric motor  
Clipper fanning mill  
4 row JD hoe  
18 ft. 6 in. auger with electric motor  
Old case combine for salvage  
Old cracker hoist  
Flat bed wagon

### LIVESTOCK EQUIP., FENCING AND MISC.

100 hog panels  
5 cattle panels  
Cement blocks  
Steel posts  
Wooden posts  
2 round steel water tanks  
500 gal. propane tank  
Portable livestock chute  
14 farrowing pens  
Artfield hog scale  
Lumber 2x12s, 4x8s, 2x6s, 2x4s  
12 metal gates, assorted sizes  
25 Sioux Gates, assorted sizes  
Head lock, like new  
Grain spreader  
Mineral feeder  
3 pl. hog carrier  
Electric motor, 1/2 and 3/4 HP  
Pipe  
Vet supplies  
Heat lamps  
Electric tank heaters  
Red dirt scoop  
Small amount of straw  
Other misc. hog equipment

### BUILDINGS

Hog hut 10x14  
7 6x8 hog huts in good shape  
2 Behlen corn cribs, steep roof, 1500 bu. with wooden floor  
Extra roof sheets, 8 ft. long  
2 steel bins, 1000 bu.  
Wooden granary 18x8  
Hog shelter 24x12  
Brooder House

### ANTIQUES & COLLECTIBLES

High wheel wagon, in good condition  
Misc. wood and steel wagon wheels  
Wood wagon tongues  
Nack yokes  
Walking plow  
Harness  
Fly nets  
Forge  
Old wrenches and tools  
Wood nail kegs  
50 gal. wood barrel  
Many wood boxes and crates  
Milk bottles  
Wood croquet set  
Oak arm chair  
Oak dresser  
Ornate wood medicine chest  
Wood cabinet  
Flower pots and vases  
Tins  
Advertising items  
Wicker  
Old rugs  
Other misc. items

### HOUSEHOLD

Maple baby bed and mattress  
Kitchen items  
Lamps  
Small appliances  
Luggage  
Hamper  
Some toys  
Rapes and curtains  
Other misc. items  
Small vacuum  
Flor polisher  
Rugs  
Bedding  
Sewing cutting board

### SHOP TOOLS

All compressor  
Electric emery wheel  
Vise  
Knapco heater  
Socket sets and wrenches  
Wheel Puller  
Torch set  
Anvil  
Step ladder  
Kero Sun heater

### Electric welder

Misc. tools  
Supplies  
Many other misc. items  
30ft. aluminum ladder  
Lots of bolts

### PICK UP AND MOWERS

1976 Chevy 4 wheel drive pickup, 1/2 ton  
2 Snapper riding lawn mowers, 8 HP

## FRED NELLOR ESTATE

For more information call 402-372-3066 during noon hour

Auction Conducted By

Jim Ortmeier & Associates Real Estate & Auction Service

402-372-3935 221 North Main Street West Point, Nebraska

Jim Ortmeier  
402-372-3461

Keith Lutz  
402-685-5939

Russ McCall  
402-349-5561

## RESIDENTIAL REAL ESTATE UPDATE

### 30's - 40's



Spotless 2 bdrm w/ permanent siding, new kitchen & bsmt apt. \$32,500



Spotless 2+1 bdrm w/ formal dining, 1 1/2 bath, family room \$38,000



Spacious 2 bdrm, w/ main fl. laundry, nice woodwork, lots of built-ins, quality windows & more..... \$39,950



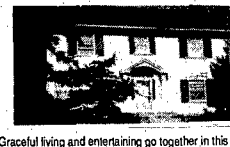
Remodeled 2-story home w/ 4 bdrms, modern kitchen & bath, main-floor laundry, recent roof & low taxes, fenced yd & 1-car garage, a steal @ \$39,850

Commercial: Main St. location  
100' x full basement, new roof,  
C/A & ample parking \$24,000

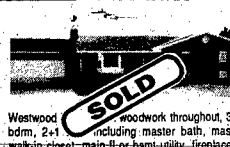
### 70's - 90's



Brand new 3-bdrm, 2 bath w/ main floor laundry. Kitchen, dining & living open w/ cathedral ceiling. Quality throughout w/ 2-car garage..... \$79,950

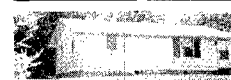


Graceful living and entertaining go together in this traditional colonial home featuring remodeled kitchen & baths, 4 bdrms, great room w/ fireplace, family room, hardwood floors, open staircase & much, much more..... \$85,000

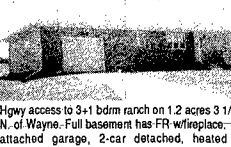


Westwood woodwork throughout, 3+1 bdrm, 2+1 including master bath, master walk-in closet, main fl. or bsmt. utility, fireplace in LR, french doors to deck, den w/ bar & sink, lg FR, lg 2-car garage..... \$94,500

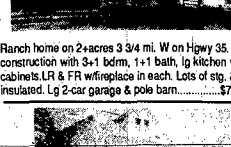
### Country Living



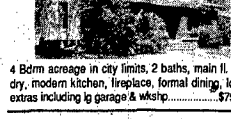
You'll feel "snug as a bug" in this modern home nestled in a cedar grove on 5.22 acres only 5 3/4 mi. from Wayne & 3 1/2 mi. from Wakefield. 1.8 tillable ac. & a nice pasture area add to this serene setting..... \$42,000



Hwy access to 3+1 bdrm ranch on 1.2 acres 3 1/2 mi. N. of Wayne. Full basement has FR w/ fireplace, 1-car attached garage, 2-car detached, heated garage..... \$65,000



Ranch home on 2+ acres 3 3/4 mi. W on Hwy 35. Solid construction with 3+1 bdrm, 1+1 bath, lg kitchen w/ oak cabinets, LR & FR w/ fireplace in each. Lots of stp, & well insulated. Lg 2-car garage & pole barn..... \$74,500



4 Bdrm acreage in city limits, 2 baths, main fl. laundry, modern kitchen, fireplace, formal dining, lots of extras including lg garage & wksp..... \$79,500


Large 3+2 bdrm ranch on 1 1/2 acres 6 mi N. of Wayne. Quality construction throughout this beautiful home w/ 3 full baths, FR, wet bar, fireplace & earth stove, must see!..... \$85,000

To Sell or Buy...  
CALL....  
TERI HIGBEE  
Residential Sales Associate

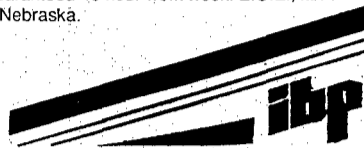
**MIDWEST**  
Land Co.  
206 Main Street - Wayne, NE  
375-3385



## HELP WANTED



If you are looking for a job in the beef packing industry, come to work for one of the safest in the industry. IBP, Inc. the world's largest processor of beef and a growing force in pork processing is currently conducting interviews for full and part-time production workers in our slaughter division. On the job training starting wage \$6.35 per hour with an opportunity to increase to \$9.10 per hour. Benefits include medical insurance, paid vacation, paid holidays, savings and retirement. Safety incentive programs. Candidates who feel qualified apply in person Monday through Friday, 8 a.m. to 4 p.m. Guaranteed 40 hour work week. E.O.E., M/F. Apply West Point, Nebraska.



**QUALITY NURSING ASSISTANTS** are needed for all shifts. We will pay you for the 75 hour Nurse Assistant Training Course. Apply in person to: Wakefield Health Care Center, 306 Ash St., Wakefield, Nebraska 68784. Jy23tf

ACCEPTING applications for full time day shift for certified nursing aid or CSM. Contact Director of Nursing, Wayne Care Centre, 375-1922. Au2tf

**MAID WANTED.** Apply in person. Amber Inn, Wayne. Au2013

**WANTED:** Feedlot pen rider, Wisner, NE. 529-6966. Au2313

**HELP WANTED:** RN's & LPN's, orderlies and nurses aides interested in flexible hours, full or part-time hours, week or weekends. Contact Carol Nierdzik or Marilyn White at Hillcrest Care Center, 256-3961. Au2713

**HELP WANTED:** All positions. Under new management. Apply in person at the Wagon Wheel, Laurel, NE. Au2713

**WANTED:** Secretary, full-time, legal experience or other secretarial experience preferred. Immediate opening. Send resume to Law office of John M. Thor, P.O. Box 39, Wisner, Nebraska 68791. Au271f

**COMPLETE CLEANING** has part-time floor cleaning openings in Wayne. Hours are Sunday, 5 p.m. to 11 p.m., Tuesday and Thursday, 7:30 p.m. to 10 p.m. Wages are \$4.50 per hour and up. Call Monday through Friday, 1 p.m. to 4 p.m. at 1-800-658-3216. Au2714

**APPLY AT 7-11** for clerk's position. Must be 19 years old. Au2714

**OFFICE CLERK - Full time position.** Some bookkeeping and data entry. Must be accurate and dependable. Send resume by September 15 to Wayne County Clerk's Office, Box 248, Wayne, NE. Au3012

**ATTRACTIVE PAY - PART TIME**  
Teaching / PTA / Community work or sales background helpful. 10-20 flexible hours introducing preschool and reading programs to interested parents in local area. Advancement potential. Write: Manager, 3126 Pierce, Sioux City, IA 51104.

## WANTED

**QUALITY PAINTING** - interior, exterior. Free estimates. Call Ken Lundin, 287-2801. Jy12tf

**SLOT MACHINES,** juke boxes, 10c coke machines, peanut machines, old advertising, interesting collectibles. Will pick up. Newman, 9N920 Meadow Drive, Elgin, IL 60123. 908-464-5661. Au2716

**FOOD SERVICE SUPERVISOR**  
Apply in Person  
Wakefield Health Care Center,  
306 Ash,  
Wakefield, NE. 7-30

**Full time bookkeeper receptionist wanted.**  
Send resume to  
Box 127, Wayne,  
NE 68787.

**FOR SALE**  
FOR SALE: 1982 Yamaha 750 SECA. \$500 OBO. 375-5376. Jy30tf

**ATTENTION:** Government seized vehicles from \$100. Fords, Mercedes, Corvettes, Chevys. Surplus Buyers Guide: (1) 802-838-8885; Ext. A-3215.

**LAND SALE**  
NE quarter 13-28-2E  
Cedar County.  
Emma Haisch.  
Contact:  
State National Bank  
and Trust Company,  
375-1130. 8-23

**LAND SALE**  
NE quarter section  
12., Township 27 N,  
range 3E. Irrigated,  
well, lovely home.  
Contact:  
State National Bank  
and Trust Company,  
375-1130. 8-23

**CONCRETE WORK,** brick work, custom rock. Free estimates. Call Dennis, 375-5621. Au2718

**WORK WANTED:** Will babysit in my home. Reasonable rates. Call 375-4226. If not home, leave message on machine. Au2713

## SPECIAL NOTICE

**PILLOW CLEANING**  
Make your pillows look like new. Have them completely renovated and new ticking and back on your bed the same day. Only \$6.50 per standard pillow. Do it now for restful sleep! One day only - Friday, September 7, 8:00 a.m. till 4:00 p.m. Foam and Dacron also renovated by this process. Bring in your featherbeds and have them made into pillows. Mobile unit located at the garage north of Wayne City Hall. Sponsored by V.F.W. Auxiliary #5291 Wayne. 8-27

**FAX**  
Fast and economical.  
Send or receive documents anywhere  
in the world... in just seconds!  
**THE WAYNE HERALD**  
114 Main - 375-2600 - 1-800-672-3418

# NOTICE

**We are looking for a few full time employees who are interested in making a career with us! We are a fully modernized manufacturing plant with good pay and benefits.**

**We have a need for production workers with capabilities for on the job training leading to supervisory positions.**

**If you feel you have these capabilities please apply in person at:**  
**WEST POINT DAIRY PRODUCTS, INC.**  
WEST POINT, NE 68788  
402/372-5551 - ASK FOR EILEEN 8-23

## MAIL ROOM HELP

**DRIVING AND LIFTING IS REQUIRED.**

**Apply if you can work part or all of the following hours:**  
Monday - 1 p.m. to 10 p.m.  
Tuesday - 9 a.m. to 10 p.m.  
Wednesday - 1 p.m. to 4 p.m.  
Friday - 9 a.m. to 1 p.m.

**Apply in person at**  
**The Wayne Herald**  
Ask for Doris

## NEBRASKA STATEWIDE CLASSIFIEDS

**DON'T MISS** Lexington's Labor Day Antique and Craft Extravaganza at the Dawson County Fairgrounds, Lexington, NE, Sept. 1-2-3. Over 150 dealers. Flea market dealers needed.

**WOLFF TANNING** beds, Commercial, home units, from \$199.00. Lamps, lotions, accessories. Monthly payments low as \$18.00. Call today, free color catalog, 1-800-228-6292.

**MOTEL,** 36 units, plush living quarters plus all the extras, on 13 acres. Owner financing after required down payment. Write or call Chuck Burke & Associates, 721 East 4th, North Platte, NE 69101. 308-532-2485 or 534-6960.

**MOTEL AUCTION,** absolute sale, 87 unit Erin Ranch, Grand Island, NE, large commercial building, indoor pool. Excellent for partial conversion to apartments, offices, independent living for elderly. Sale: Sat., Sept. 15, 10:30 a.m. Inspection: Sept. 8, 10:00 a.m.-2:00 p.m. For complete information call 800-742-4422, Gil Grady & Associates, 201 West O, Lincoln, NE 68528. Specializing in the sale of motels for over 25 years.

**FLORAL/GIFT** Shop: 40 years, Main Street, Gering, Gross \$120K+. Entire North Platte Valley, 6 towns, 5 wire services. Excellent business. 308-235-4604, PO Box 363, Kimball, NE 69145.

**BE YOUR own boss:** CPAs report excellent 1st month earnings. National co. needs local person to service 100% natural juice route. Best one man business ever. No overhead. Must have \$14,400, secured 100% by inventory. This could make you independent. First time offer. For details call 9 a.m. to 9 p.m., 1-800-741-1117.

**GOLFERS! NEVADA** Bob's Discount Golf in Lincoln has hundreds of discount specials. Stop before and after the Fair and football games. 2301 Hwy. 2. 402-423-8022.

**HAPPY JACK** Flea Guard: All metal patented device controls fleas in the home without pesticides. Environmentally safe. Results overnight. At Farmland & Double Circle Co-ops.

**YORK COUNTY** Highway Department intends to lease its Central City, NE gravel pit, along with the sale of its gravel production equipment. Call 402-362-5573.

**BRONCO LOVERS:** 1988 Bronco XLT 4 door conversion. 5,000 miles. 302F1. \$20,950 (\$10,000 under new). 1-308-377-2439.

**MINIATURE HORSES & Shetland Ponies** Auction, Saturday, Sept. 8, 1990, 1:00 p.m. Located: 3 miles north & 1 west of Yankton, SD. Dick Payne, Owner, 605-665-3888.

**EXOTIC ANIMAL** sale-show, Kearney, NE. Exposition Bldg., August 31, Sept. 1 and 2. Over 20 different species consigned. Admission \$5.00. Information 308-893-2733, Riverdale Exotics.

**CONVENIENCE STORE** operation for sale in Hemingford, NE. Great location, modern, good business. Priced to sell. If serious, call 308-487-3410 or 308-487-3891.

**JUKE BOXES** wanted. Any condition. 816-587-2241, George Price.

## SPECIAL NOTICE

**PIANO/KEYBOARD** Lessons. \$5.00, children or adults. Experienced teacher just moved to Wayne. 375-3714. Au3013

**GENERAL OFFICE HELP.** Computer skills necessary. Please send resume to PO Box 523, Pender, NE 68047. Au2014

**ATTENTION: Earn Money** Watching TV! \$32,000/year income potential. Details (1) 603-838-8885 Ext. TV-3215.

**CARROLL NEWS CORRESPONDENT**  
The Wayne Herald has an immediate opening for a news correspondent in Carroll. Duties would include gathering news from local clubs and organizations, as well as the school, churches and other community events. Photography experience helpful but not necessary. For an interview, contact LaVon at The Wayne Herald, 375-2600. 8-23

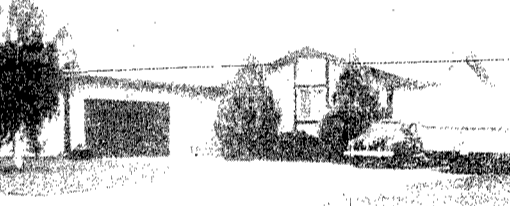
# NEBRASKA BOXED BEEF

Norfolk, NE

Accepting Applications  
For First Shift Full-Time Production Employees in Our Beef Fabrication Plant in Norfolk, Nebraska.  
Top Wages and Benefits.  
Paid Holidays, Paid Vacation, Free Medical Benefits (Provided for Both Employees and Family), Life Insurance, Stable Employment, Scheduled Wage Increases.

Applications Accepted at  
Nebraska Job Service  
119 Norfolk Avenue  
Norfolk, Nebraska  
8-5 Daily - Monday-Friday  
Equal Opportunity Employer. 8-2

## FEATURE OF THE WEEK



**PROPERTY EXCHANGE**  
112 PROFESSIONAL BUILDING  
WAYNE, NEBRASKA 68787  
OFFICE: 375-2134  
DARREL FUELBERTH: 375-3205  
VERN D. STORM: 375-4014


*Greetings from the field!*



Corn looks great! Now... where's that barbecue?

*Who says business can't be fun!*  
Having a great time at Fontanelle Field Days... There's no other like it! Food, beverages, friends, fun and yes... new Corn Hybrids too!  
Hope you can join us!

**THURSDAY, SEPTEMBER 6, 1990**  
4:30 P.M. TIL DARK  
**DAVE SIEVERS FARM**  
4 1/2 MILES WEST OF WAYNE



FONTANELLE HYBRIDS • RT. 1 BOX 18 • NICKERSON, NE 68044 • 1-800-278-4353

**Jammer Photography**  
will be closing at  
12:00 noon on Saturday,  
September 1, 1990